



I, JOHN E. KAUKOLA, JR., HEREBY DECLARE THAT THIS MAP WAS DRAWN UNDER MY SUPERVISION FROM A SURVEY MADE UNDER MY SUPERVISION, THAT THIS MAP DOES NOT REPRESENT AN OFFICIAL BOUNDARY SURVEY AND HAS NOT BEEN PREPARED IN ACCORDANCE WITH G.S. 47-30 AS AMENDED. IT HAS NOT BEEN REVIEWED BY A LOCAL GOVERNMENT AGENCY FOR COMPLIANCE WITH ANY APPLICABLE LAND DEVELOPMENT REGULATIONS. WITNESS MY ORIGINAL SIGNATURE, REGISTRATION NUMBER AND SEAL, THIS 2ND DAY OF SEPTEMBER, 2022.

I FURTHER CERTIFY THAT THIS SURVEY WAS BASED ON HORIZONTAL AND VERTICAL CONTROL POINTS DETERMINED FROM AN ACTUAL GPS (OR GNSS) SURVEY MADE UNDER MY DIRECT SUPERVISION AND THE FOLLOWING INFORMATION WAS USED TO PERFORM THE SURVEY:

HORIZONTAL POSITIONAL ACCURACY: 0.10 FEET  
 VERTICAL ACCURACY: 0.10 FEET  
 TYPE OF GPS: VRS RTK  
 DATES OF SURVEY: JULY 28 2022  
 HORIZONTAL DATUM/EPOCH: NAD 83 (2011)  
 VERTICAL DATUM: NAVD 88  
 PUBLISHED/FIXED-CONTROL USE: NCGS "PTS 4"  
 GSDM MODEL: 128  
 COMBINED GRID FACTOR: 0.99987938  
 UNITS: US SURVEY FEET



John E. Kaukola, Jr.  
 NORTH CAROLINA PROFESSIONAL LAND SURVEYOR  
 REGISTRATION NUMBER L-3999  
 john.kaukola@sam.biz  
 919-802-8898

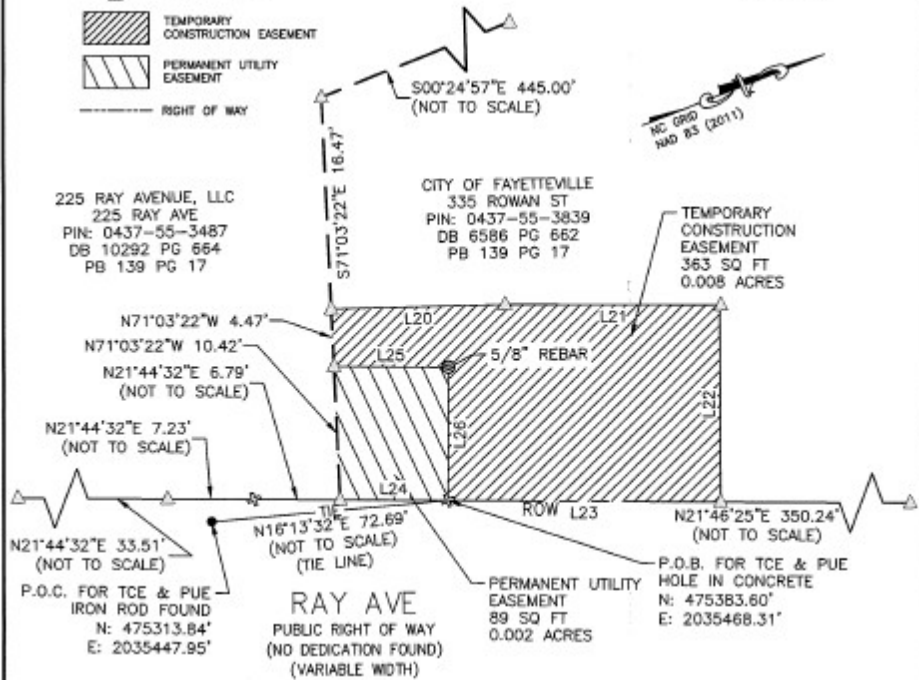
10/10/2022

VICINITY MAP  
(N.T.S.)

- LEGEND:
- HOLE IN CONCRETE
  - CALCULATED POINT
  - TEMPORARY CONSTRUCTION EASEMENT
  - PERMANENT UTILITY EASEMENT
  - RIGHT OF WAY

225 RAY AVENUE, LLC  
 225 RAY AVE  
 PIN: 0437-55-3487  
 DB 10292 PG 664  
 PB 139 PG 17

CITY OF FAYETTEVILLE  
 335 ROWAN ST  
 PIN: 0437-55-3839  
 DB 6586 PG 662  
 PB 139 PG 17

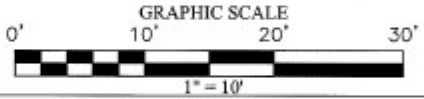


Line Table		
Line #	Length	Direction
L20	13.429	N19° 56' 35.84"E
L21	16.805	N21° 36' 41.55"E
L22	15.344	S88° 42' 16.35"E
L23	21.084	S21° 46' 25.00"W
L24	8.335	S21° 46' 25.00"W
L25	8.850	N21° 46' 25.00"E
L26	10.405	S88° 13' 35.00"E

NCGS MONUMENT  
 "PTS 4"  
 PUBLISHED COORDINATES  
 NAD83/2001  
 N: 474924.95  
 E: 2034534.95  
 ELEV: 101.43 NAVD 88  
 COMBINED FACTOR: 0.99987938

NOTES:

- CONTROL USED HEREON WAS PROVIDED BY WK DICKSON, INC. ON A SURVEY PERFORMED BY STEWART ON 07/09/2020 AND 08/06/2020. THEN CHECKED BY SAM ON JULY 28TH, 2022.
- INFORMATION SHOWN BASED ON A FIELD SURVEY PERFORMED BY SAM LLC ON JULY 28, 2022.
- REFERENCES SHOWN HEREON.
- ALL DISTANCES ARE HORIZONTAL GROUND DISTANCES IN U.S. SURVEY FEET UNLESS OTHERWISE NOTED.
- THE HORIZONTAL DATUM IS N.C. GRID NAD 83/2011.



2641-116 Sumner Blvd.  
 Raleigh, NC 27616  
 Ofc: 919.878.7466  
 Email: info@sam.biz  
 NCBELS FIRM#: F-1442  
 PROJECT# 1022071807



FAYETTEVILLE PUBLIC WORKS COMMISSION

EXHIBIT "C" - PERMANENT UTILITY EASEMENT & TEMPORARY CONSTRUCTION EASEMENT - RAY AVENUE

OWNER: CITY OF FAYETTEVILLE	SHEET 3 OF 6
DEED BOOK: 6586	PAGE: 662
TOWNSHIP: CROSS CREEK	COUNTY: CUMBERLAND
PROJECT MANAGER: JA	DRAWN BY: VR
DATE: 10/10/22	SCALE 1"=10'
REID# 0437553839000	STATE: NORTH CAROLINA
APPROVE BY: JK	
PWC DRAWING:	

AVS-16462