

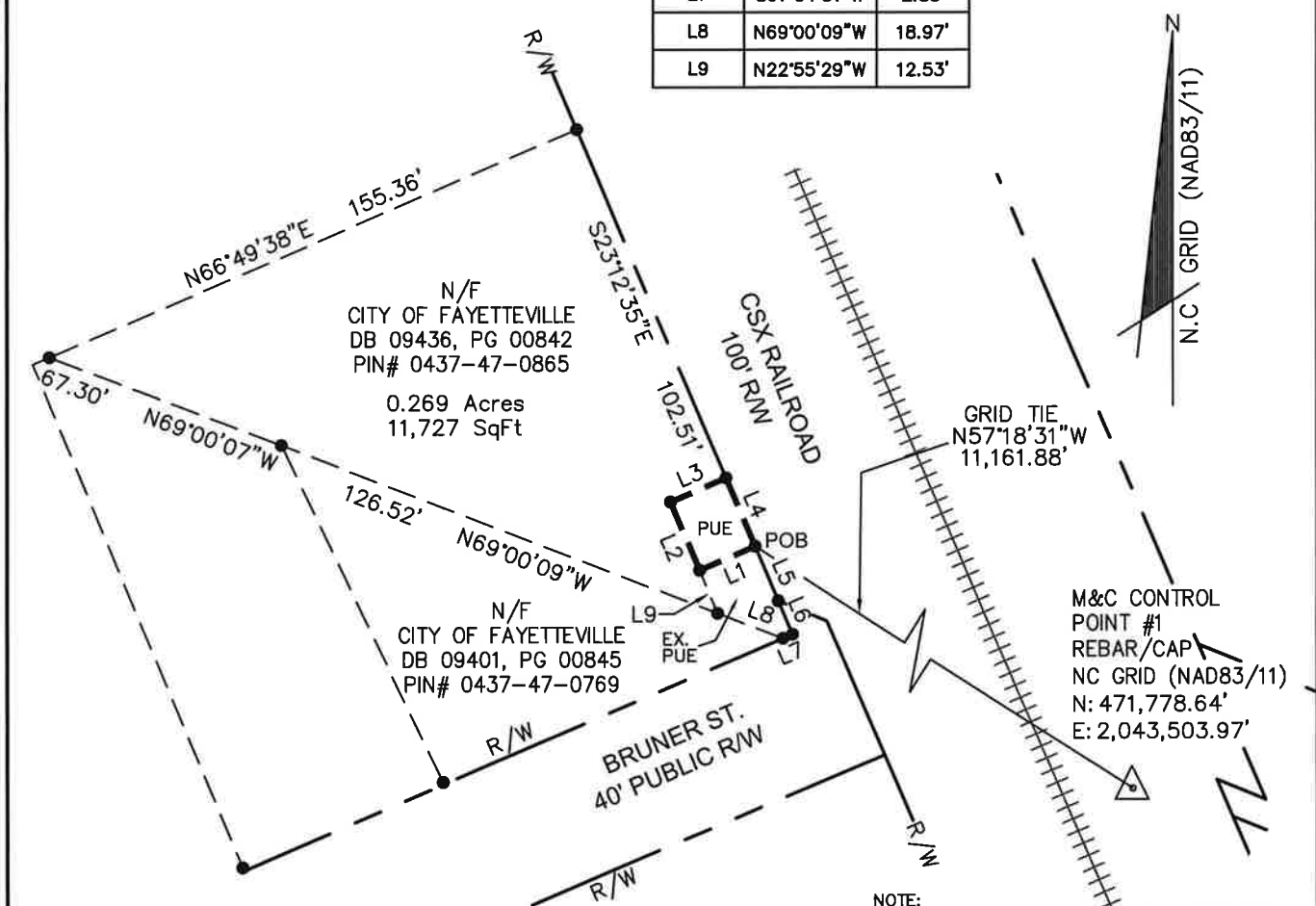
I, ROBIN L. LEE, PLS L-3759, CERTIFY THAT THIS PLAT WAS DRAWN UNDER MY SUPERVISION FROM AN ACTUAL SURVEY MADE UNDER MY SUPERVISION FROM INFORMATION SHOWN IN DEED BOOKS REFERENCED ON MAP AND MAP BOOKS REFERENCED ON MAP; THAT ANY LINES NOT ACTUALLY SURVEYED APPEAR AS BROKEN LINES AND WERE PLOTTED FROM INFORMATION AS NOTED ON THE PLAT; THAT THE RATIO OF PRECISION AS CALCULATED IS BETTER THAN 1:10,000; THAT THE AREA IS COMPUTED BY COORDINATE METHOD; THAT THIS PLAT WAS PREPARED IN ACCORDANCE WITH G.S. 47-30(m) AS AMENDED. THE CONTROL FOR THIS SURVEY WAS MADE UNDER MY SUPERVISION AND THE FOLLOWING INFORMATION WAS USED TO PERFORMED THE SURVEY.

CLASS OF SURVEY: AA
TYPE OF GPS FIELD PROCEDURE: VRS DATES OF SURVEY: JUNE 2015 & 04/01/2019
DATUM/EPOCH: NAD83/2011 PUBLISHED/FIXED CONTROL USE: FIXED CONTROL
GEOID MODEL: GEOID 12B COMBINED GRID FACTOR: 0.999880181
UNITS: US SURVEY FEET TYPE AND MODEL OF GPS RECEIVER USED: TRIMBLE R8
PROPERTY CORNERS WERE LOCATED USING CONVENTIONAL SURVEYING METHODS. ALL CONTROL POINTS AND OTHER POINTS LOCATED WITH VRS WERE LOCALIZED AROUND POINT #1 WITH GRID COORDINATES AS FOLLOWS: . WITNESS MY ORIGINAL SIGNATURE, REGISTRATION NUMBER, AND SEAL THIS THE

21ST DAY OF November A.D., 2022. *Robin L. Lee*
ROBIN L. LEE L-3759
PROFESSIONAL LAND SURVEYOR

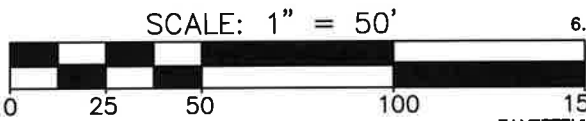
AREA TABLE	
N/F CITY OF FAYETTEVILLE DB 9436, PG 842 PIN# 0437-47-0865	
TOTAL (GIS)	+/-0.269 AC (11,727 SF)
PUE	+/-0.007 AC (326 SF)
EX. PUE	+/-0.007 AC (322 SF)
REMAINDER	+/-0.255 AC (11,079 SF)

Line Table		
Line #	Direction	Length
L1	S66°46'21"W	16.36'
L2	N22°55'29"W	20.00'
L3	N66°46'21"E	16.26'
L4	S23°12'35"E	20.00'
L5	S23°12'35"E	15.95'
L6	S23°12'35"E	9.82'
L7	S67°04'31"W	2.83'
L8	N69°00'09"W	18.97'
L9	N22°55'29"W	12.53'



LEGEND	
AC	ACRES
BC	BACK OF CURB
●	COMPUTED POINT
DB	DEED BOOK
EP	EDGE OF PAVEMENT
GRID	GRID DISTANCE
GRND	GROUND DISTANCE
IPF	IRON PIPE FOUND
IRF	IRON ROD FOUND
N/F	NOW OR FORMERLY
PB	PLAT BOOK
POB	POINT OF BEGINNING
PUE	PERMANENT UTILITY EASEMENT
R/W	RIGHT OF WAY
SF	SQUARE FEET
TCE	TEMPORARY CONSTRUCTION EASEMENT

EXHIBIT "A"
PERMANENT UTILITY EASEMENT
WATER MAIN ENCASEMENT AT
BRUNER ST. - CSX RAILROAD
ON THE LANDS OF THE
CITY OF FAYETTEVILLE
PIN# 0437-47-0865



- NOTE:
- ALL DISTANCES SHOWN ARE HORIZONTAL GROUND DISTANCES IN U.S. SURVEY FEET. (UNLESS OTHERWISE STATED)
 - ALL BEARINGS ARE BASED ON THE NORTH CAROLINA STATE PLANE COORDINATE SYSTEM (NAD 1983/11).
 - THERE ARE NO BURIAL GROUNDS OR CEMETERIES VISIBLE.
 - THERE ARE NO NCGS MONUMENTS WITHIN 2000' OF SURVEYED TRACT
 - COORDINATES SHOWN AS GROUND COORDINATES HAVE BEEN LOCALIZED AROUND POINT #1 WITH NC GRID COORDINATES OF N: 471,778.64' AND E: 2,043,503.97' (NAD 83/2011)
 - THE AREA SHOWN IS DETERMINED TO BE WITHIN THE FEMA 500 YEAR FLOOD PLAIN ACCORDING TO FLOOD INSURANCE RATE MAP 3720043600J WITH AN EFFECTIVE DATE OF 01/05/2007.

NORTH CAROLINA
CUMBERLAND COUNTY

FWC FAYETTEVILLE PUBLIC WORKS COMMISSION WATER RESOURCES ENGINEERING 955 OLD WILMINGTON RD. FAYETTEVILLE, N.C. 28301 (910) 223-4730	SURVEY/GPS BY: McKim & Creed		DATE	REVISIONS	BY
	LAYOUT BY: RLI		DATE: 11/10/22		
	PLAN/PROF. BY: RLM				
	DESIGN REVIEW BY: W/R ENGR. DEPT.				
	APPROVED BY:				
SCALE: HOR: 1"=50' VERT: 1"=			SHT: 1	AW-15356E	