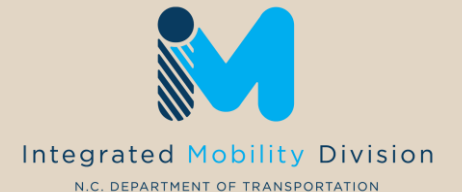




# Fayetteville Pedestrian Plan

City Council Work Session

June 2, 2025



# Project Overview

- Collaboration with NCDOT's Integrated Mobility Division
- Focuses on expanding pedestrian network and developing projects, programs, and policies to enhance safety
- Emphasizes projects near schools and universities
- Resulted in 144 recommended pedestrian projects (sidewalk, crosswalk, trail)



# Project Overview

- Previous Pedestrian Plan (Adopted 2018) mostly built-out
- Current plan update provides comprehensive safety and connectivity analysis
- Recommends 144 pedestrian projects (sidewalk, crosswalk, trail)
  - Constitute all areas of the City
  - Presented to Council for review and adoption

## GOALS



Enhance Pedestrian Safety  
and Accessibility



Promote Community  
Engagement and Education



Support Sustainable and  
Active Transportation



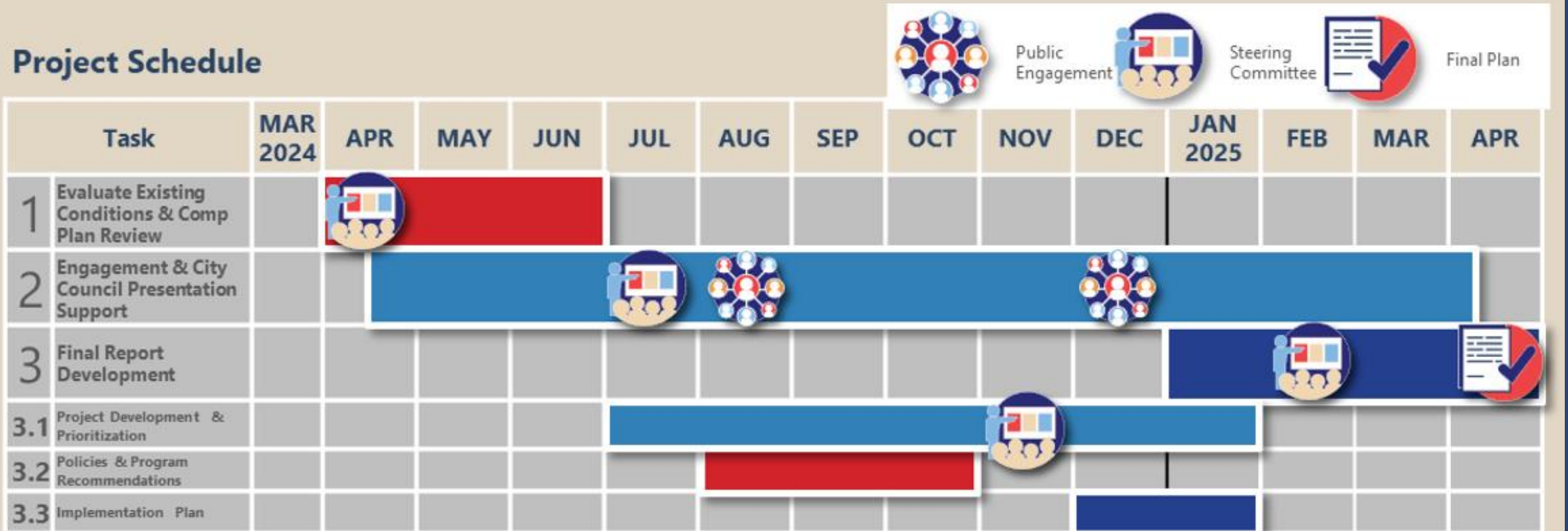
Leverage Resources for  
Community Development



Create a Thriving and  
Desirable Community

# Project Schedule

## Project Schedule



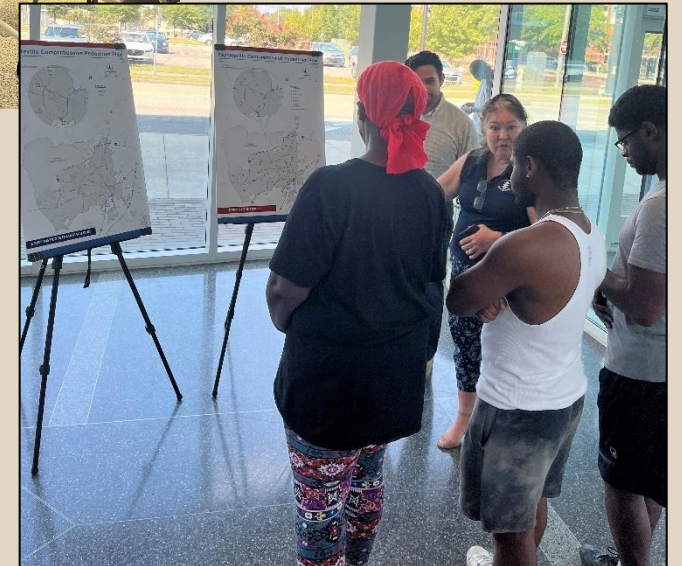
# Project Steering Committee

- Steering committee members from various agencies and community partners, including:
  - City of Fayetteville
  - NCDOT
  - FAMPO
  - Cumberland County
  - Cumberland County Schools
  - Sustainable Sandhills
  - Fayetteville State University
- Met four times at key points in the project:
  - June 2024
  - September 2024
  - December 2024
  - April 2025



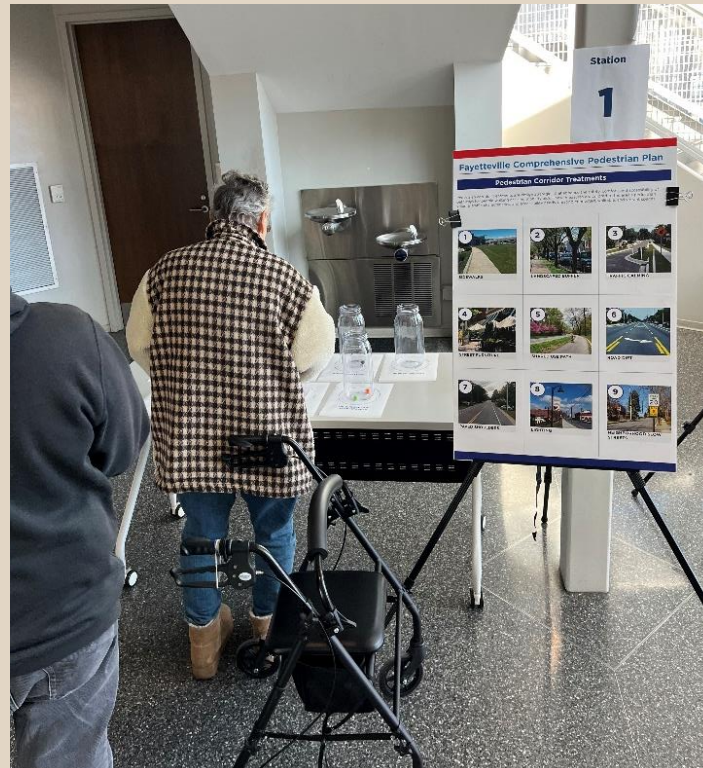
# Public Engagement

- Two Rounds of Engagement:
  - **Round 1:** Community Challenges and Opportunities – August 2024
  - **Round 2:** Project Feedback and Prioritization – December 2024



# Public Engagement

- Each round of engagement included:
  - In-person open house
  - Online comment map
  - Online survey



Round 2 voting activity

## Engagement Outcomes

### Engagement Round 1

310 map comments

500 survey responses

35 in-person conversations

### Engagement Round 2

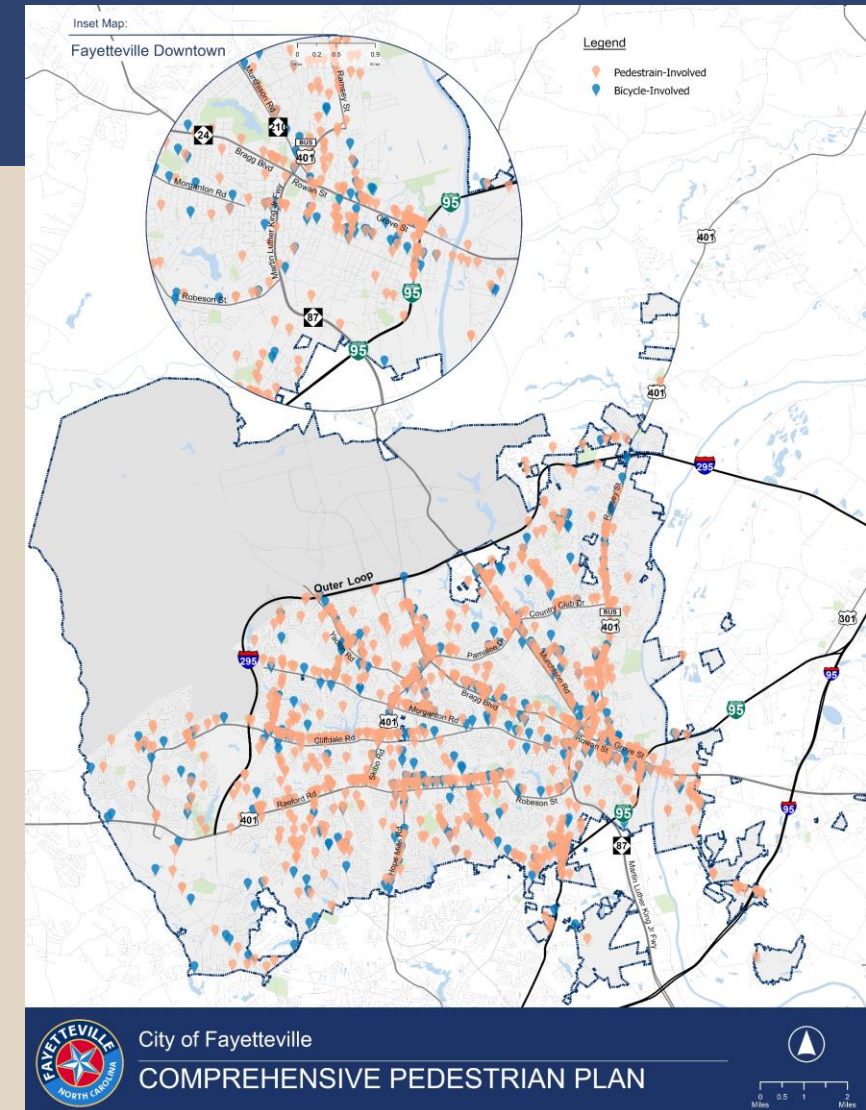
50 map comments

152 survey responses

60 in-person conversations

# Existing Conditions Analysis

- Plan Review
- Field Review
- Data collection and mapping:
  - Demographics (U.S. Census)
  - Transportation Infrastructure
  - Points of Interests (schools, parks, employers)
  - Crash History



*Bike/ped crash locations in Fayetteville (last 10 years)*



# Project Identification

## Step 1: Identify Projects from Plan Review

## Step 2: Gap Analysis

- Identify areas with crash history or safety/comfort issues
- Filtering Projects without immediate safety/comfort issues
- Review of corridors without current planned pedestrian projects

## Step 3: Project Scoring

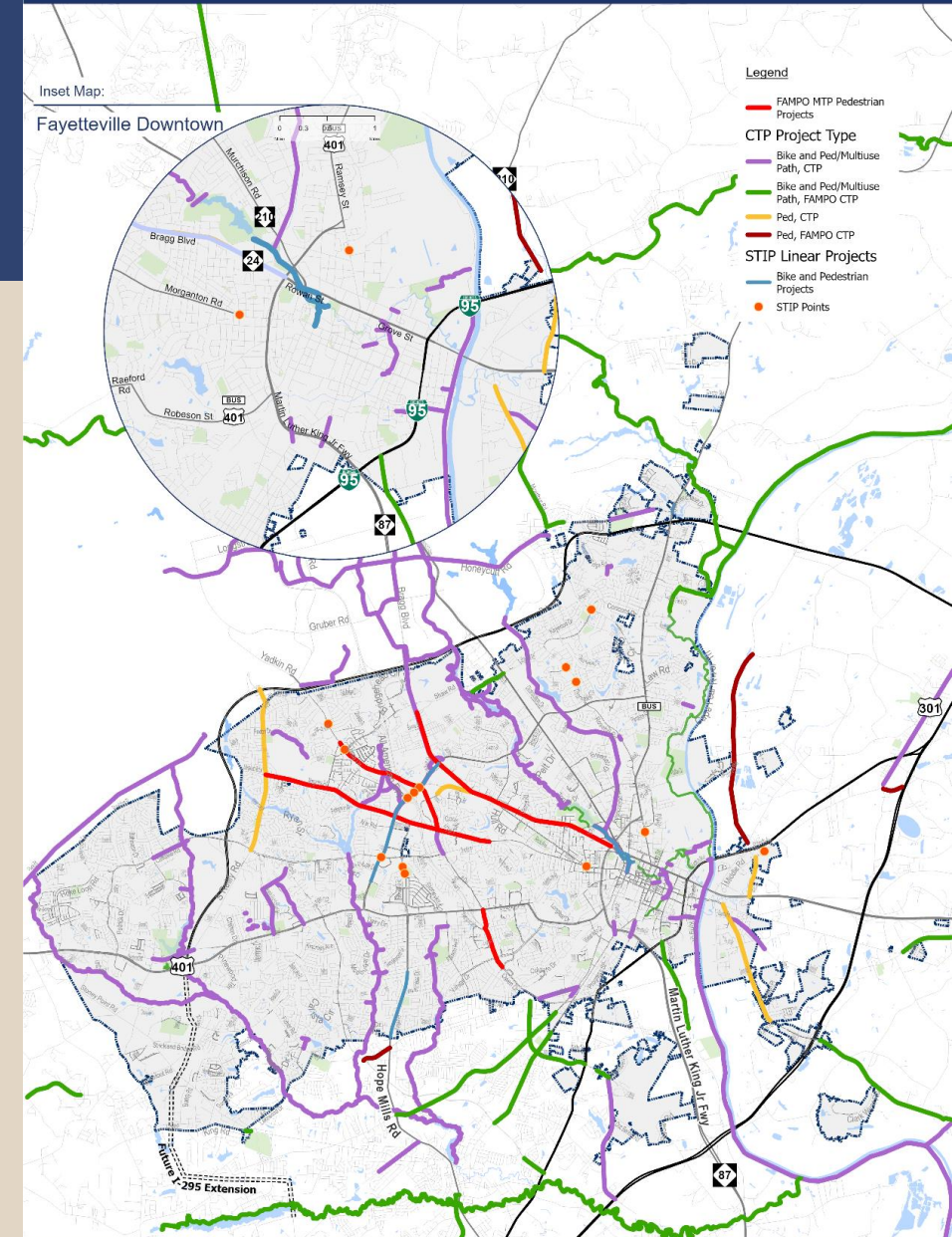
Projects were assigned a score based on series of evaluation criteria:

- Safety
- Comfort
- Equity
- Connectivity
- Land Use\*

\*Near schools, parks, employers, etc.

# Step 1: Plan Review

- Reviewed the 2018 Pedestrian Plan, the Comprehensive Transportation Plan, and FAMPO and NCDOT plans/programmed projects.
- Identified a total of 244 relevant, *uncompleted* projects



City of Fayetteville

COMPREHENSIVE PEDESTRIAN PLAN

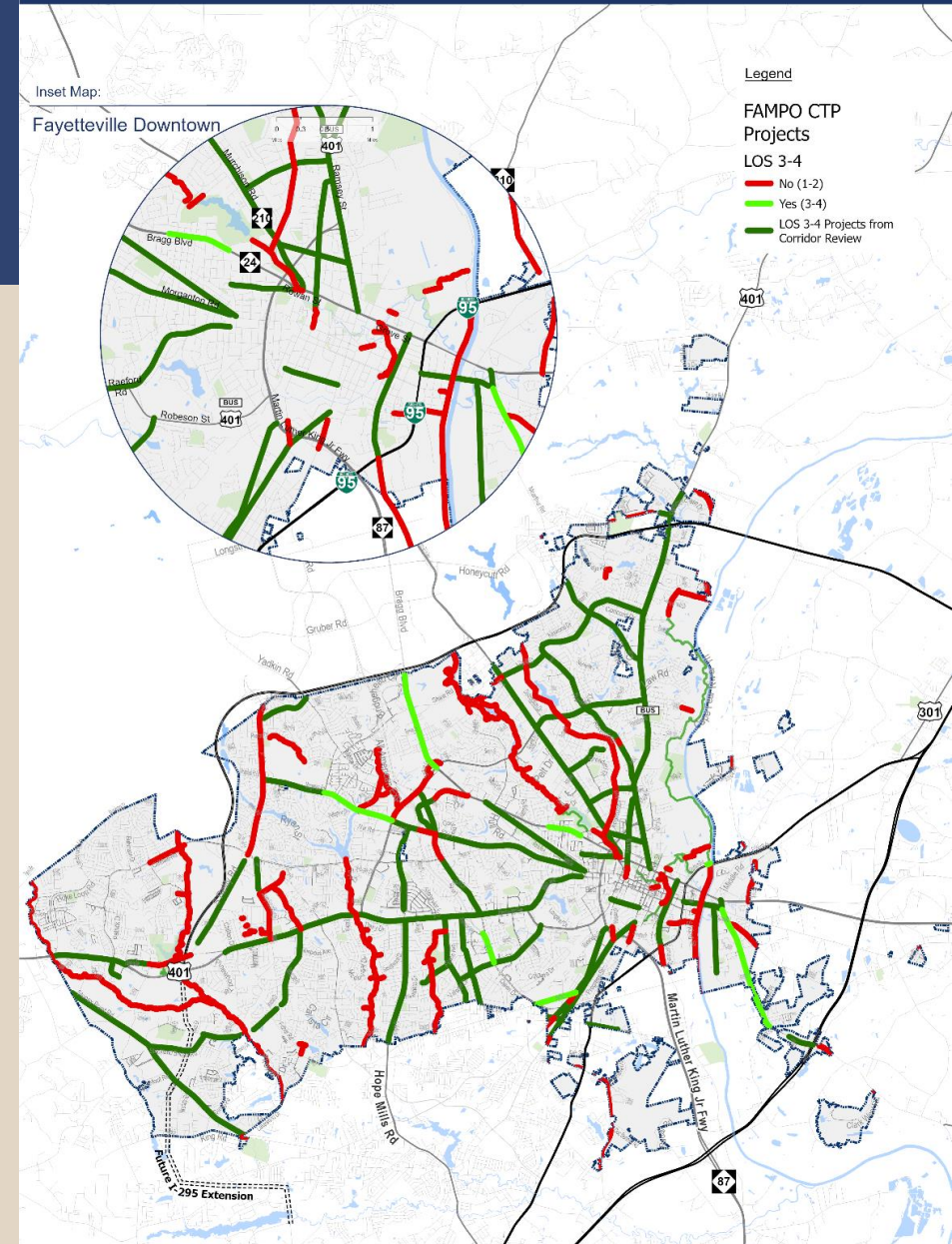


# Step 2: Gap Analysis

The following two factors were used to identify additional gaps in the pedestrian network:

- Crash history - Projects noted for the presence of pedestrian crashes
- Pedestrian Level of Comfort (PLOC) - Projects noted for having a PLOC of 3 or 4

Throughout the gap analysis, 27 additional corridors were identified to become 70 additional projects.

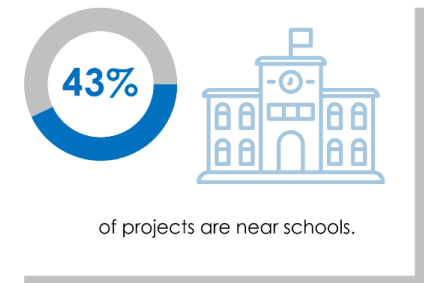
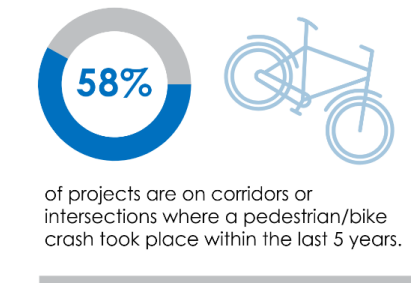
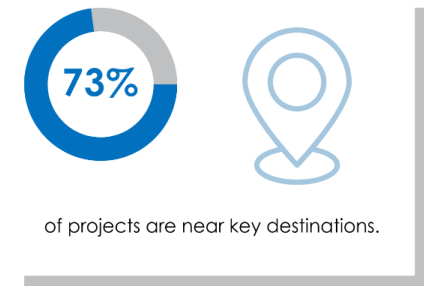
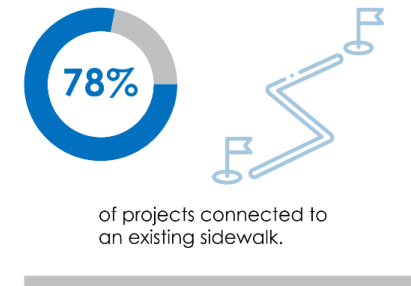
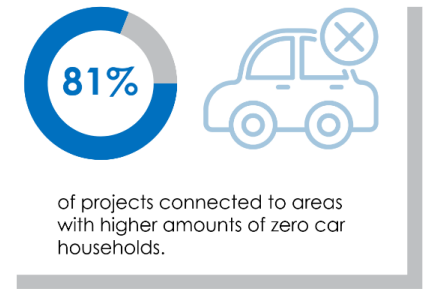




# Step 3: Project Scoring

- Filtered all projects from the plan review to 144 recommended projects based on crash history and pedestrian level of comfort
- Assigned each a score based on a series of evaluation criteria:
  - Safety
  - Comfort
  - Equity
  - Connectivity
  - Land Use
- Scores later utilized in project prioritization, but all *scored projects* were moved forward as recommendations

## 144 IDENTIFIED PROJECTS





# Project Recommendations

- Proposed network aims to improve safety, connectivity, and accessibility across Fayetteville

## Project Types



### **Sidewalks & Trails**

Enhancing pedestrian mobility along major corridors such as Cliffdale Rd and Skibo Rd.



### **Greenways & Multi-Use Trails**

Expanding connectivity through natural corridors like the Cape Fear River Trail Extension.



### **Intersection & Corridor Enhancements**

Improving crossings and accessibility along high-traffic roads.



### **School & Neighborhood Connections**

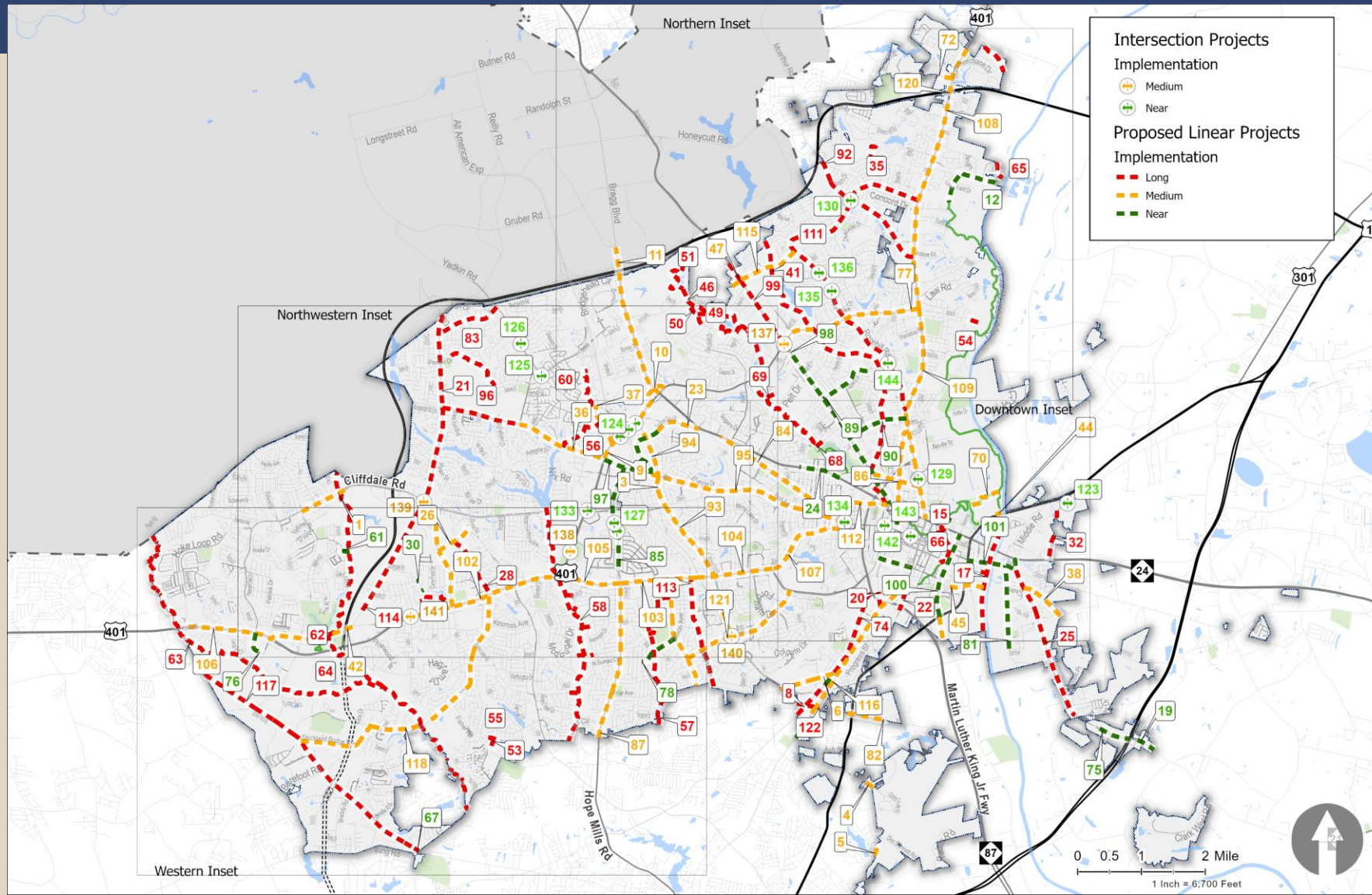
Providing safe, walkable routes for students and residents.



# Project Prioritization

- Due to the large number of projects recommended, implementation of this plan will likely take place over the next 15-20 years.
- Projects have been divided into the following priority levels:
  - Near-term (0-5 years)
  - Medium-term (5-10 years)
  - Long-term (10+ years)

# Near, Medium- and Long-Term Projects Map

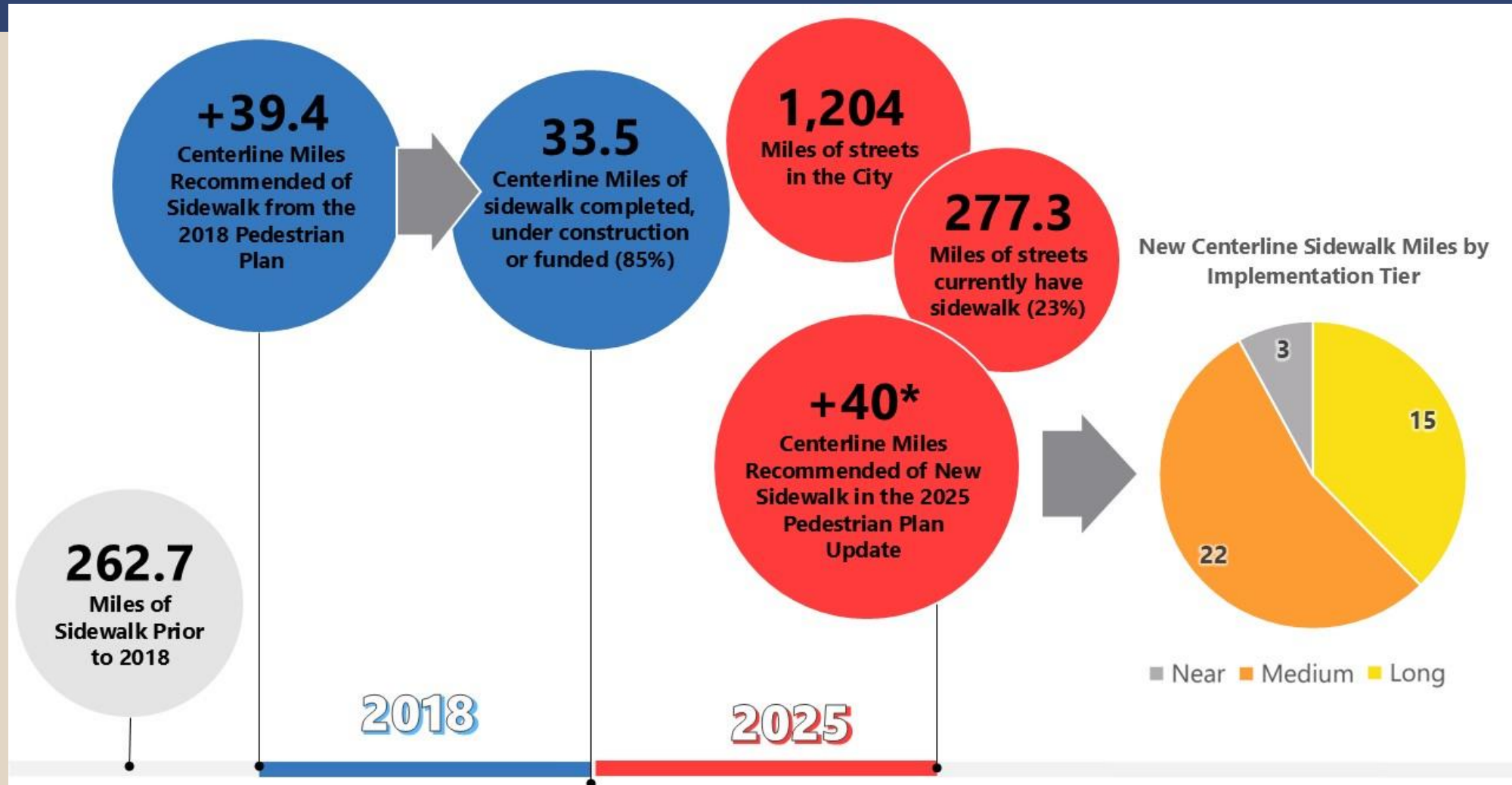


# Cost Estimation

Implementation Phase	Number of Projects	Total Length of Construction (mi)	Cost (\$M)
Near-Term	41	16.67	\$52.83
Medium-Term	57	60.47	\$210.73
Long-Term	46	68.84	\$505.95
<b>TOTAL</b>	<b>144</b>	<b>145.98</b>	<b>\$769.51</b>



# Progress from 2018 Plan



\*New sidewalk miles defined as new sidewalk where none is currently present

# Policy and Program Recommendations

- Developing and adopting a City Complete Streets Policy and Traffic Calming Policy
- Implementing creative safety awareness campaigns and programming
- Establishing a transportation-focused City commission
- Continuing to engage with K-12 public schools and prioritize projects near schools



# Community Partners

- NCDOT
- FAMPO
- Fayetteville Chamber of Commerce
- FAST Transit Center
- Cool Spring Downtown
- Cumberland County (including the Health Department)
- Sustainable Sandhills

## Other Partners

- Schools/Colleges/Universities
- Local business owners
- Business districts
- Emergency services
- Public-private partnerships

# Next Steps

## Options:

- **Option 1:** Approve the Comprehensive Pedestrian Plan Update to be placed on a Consent Agenda for adoption.
- **Option 2:** Do not approve the Comprehensive Pedestrian Plan Update and provide staff with further direction.

## Recommended Action:

- **Option 1:** Approve the Comprehensive Pedestrian Plan Update to be placed on a Consent Agenda for adoption.



# Questions and Discussion

Thank you!

Zachary Bugg, PhD, PE  
Associate Engineer  
Kittelson & Associates, Inc.  
zbugg@kittelson.com  
910.399.5699

