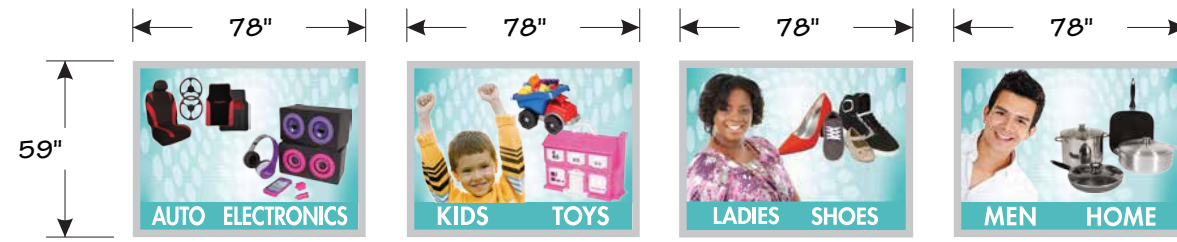


**NOTE: DIMENSIONS TO BE VERIFIED IN FIELD.**

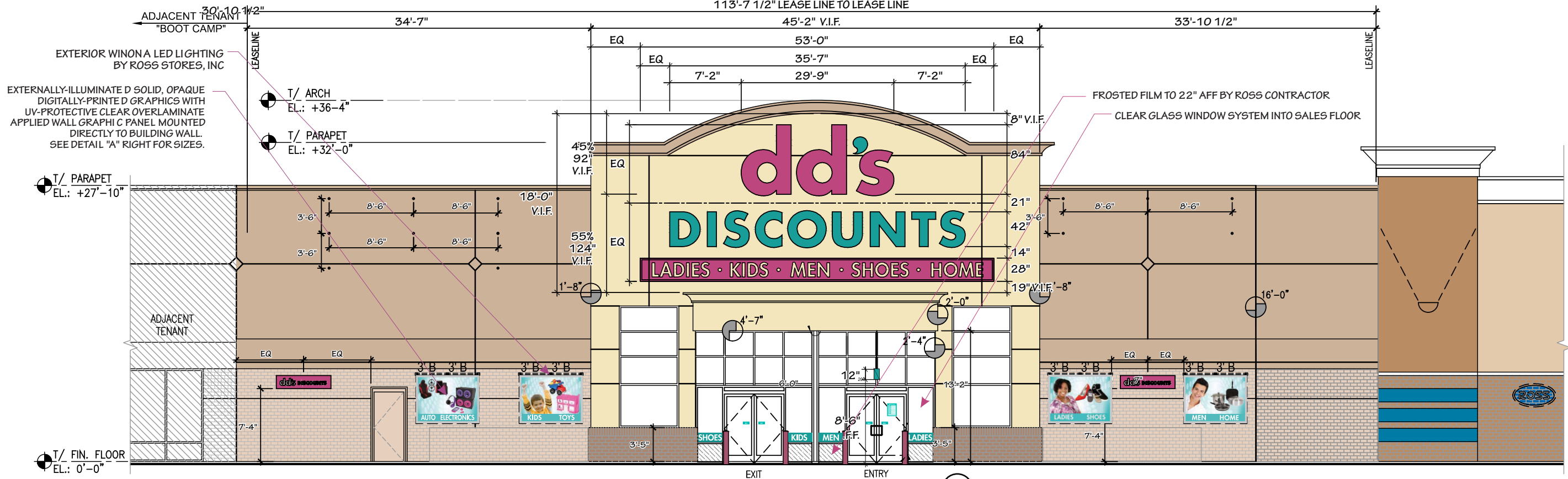


**WALL GRAPHIC PANEL SPECIFICATION**

WALL GRAPHIC PANEL(S) BY ROSS STORES, INC.

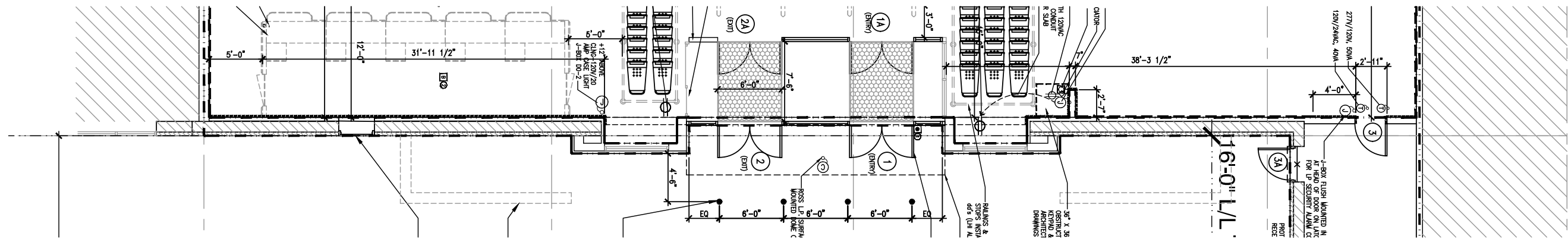
59" HIGH X 78" WIDE OPAQUE GRAPHICS DIGITALLY PRINTED DIRECTLY ONTO ALUMINUM SUBSTRATE WITH ANTI-GRAFFITI FILM PROTECTIVE OVERLAY. EXTRUDED ALUMINUM FRAME FASTENED TO SIGN FACE AND FLUSH MOUNTED TO WALL. EXTERNAL ILLUMINATION TO BE DETERMINED

**A WINDOW PANEL • DETAIL**  
SCALE: 3/16" = 1'-0"



**1 STOREFRONT • LAKE VALLEY DR • NORTH • ELEVATION**

SCALE: 3/32" = 1"



**2 PARTIAL FLOOR PLAN**

Scale: NTS

**W B H A O**  
**35.8 39.6 14.1 4.6 5.9**

**RB-E**

**WALL PANELS**

NOTES:  
WALL PANELS PROVIDED BY ROSS STORES, INC.  
ACTUAL SIGN AREA LOCATION TO BE DETERMINED BY SITE CONDITIONS.  
ROSS STORES INC. RESERVES THE RIGHT TO INSTALL ALL WALL PANELS AND/OR GRAPHICS IN THEIR STOREFRONT AND/OR SHOWCASE WINDOWS.  
ROSS CONSTRUCTION TO DETERMINE IF ADDITIONAL LIGHTING IS NECESSARY.  
SEE SHEET S-1 FOR WALL SIGN DETAILS.  
ALL DIMENSIONS TO BE VERIFIED PRIOR TO FABRICATION.

The information contained herein is intended to express design intent only. This original design is the sole property of Blair Image Elements. It cannot be reproduced, copied or exhibited, in whole or in part, without first obtaining written consent from Blair Image Elements.  
Blair Image Elements is not responsible for dimensions or notes outside of Blair Scope of Work.

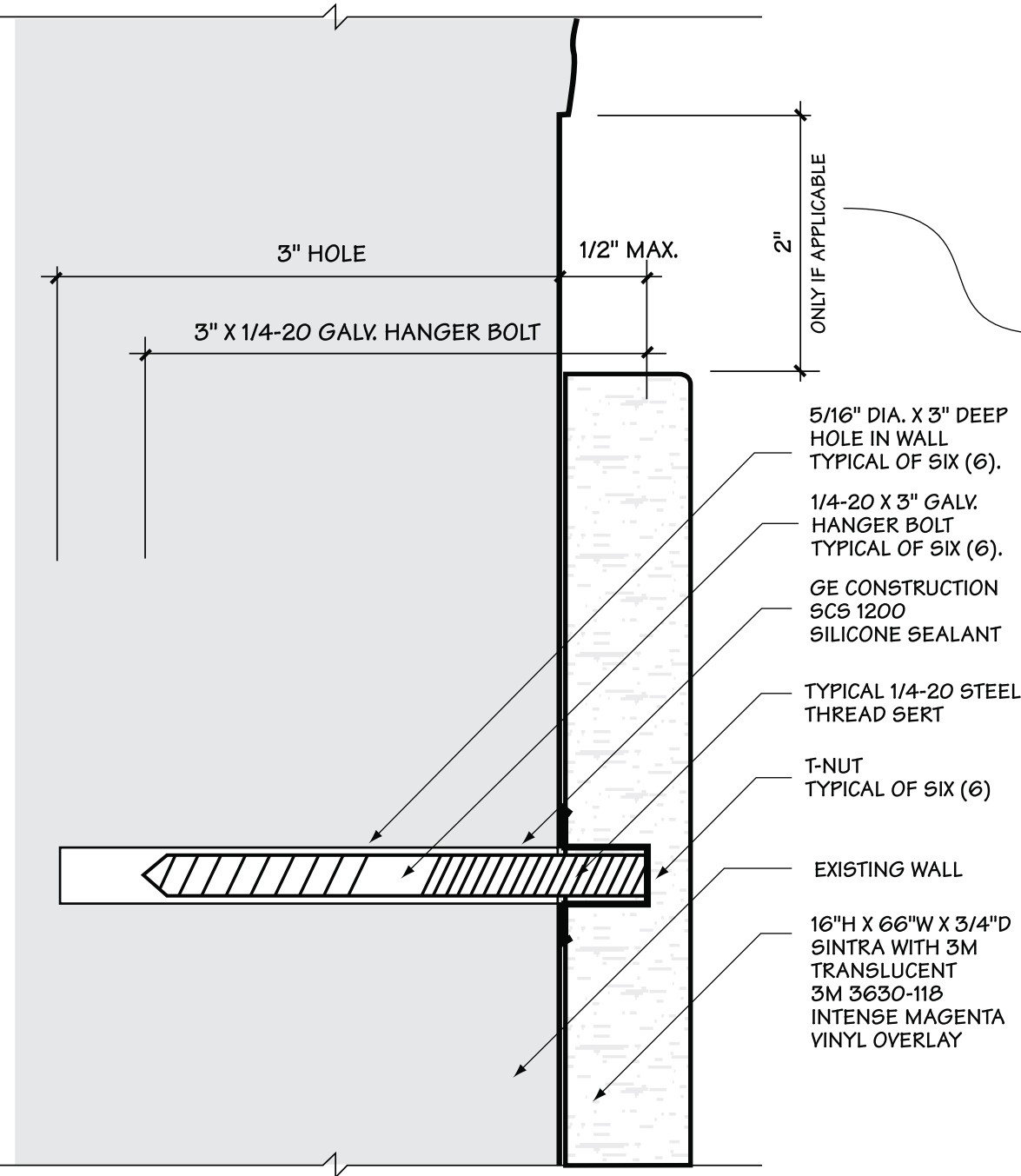


**#5564 Fayetteville, NC**  
Cross Creek Plaza  
NWC All American Freeway & Skibo Road  
Fayetteville, NC 28303

drawn 03/31/26

SHEET

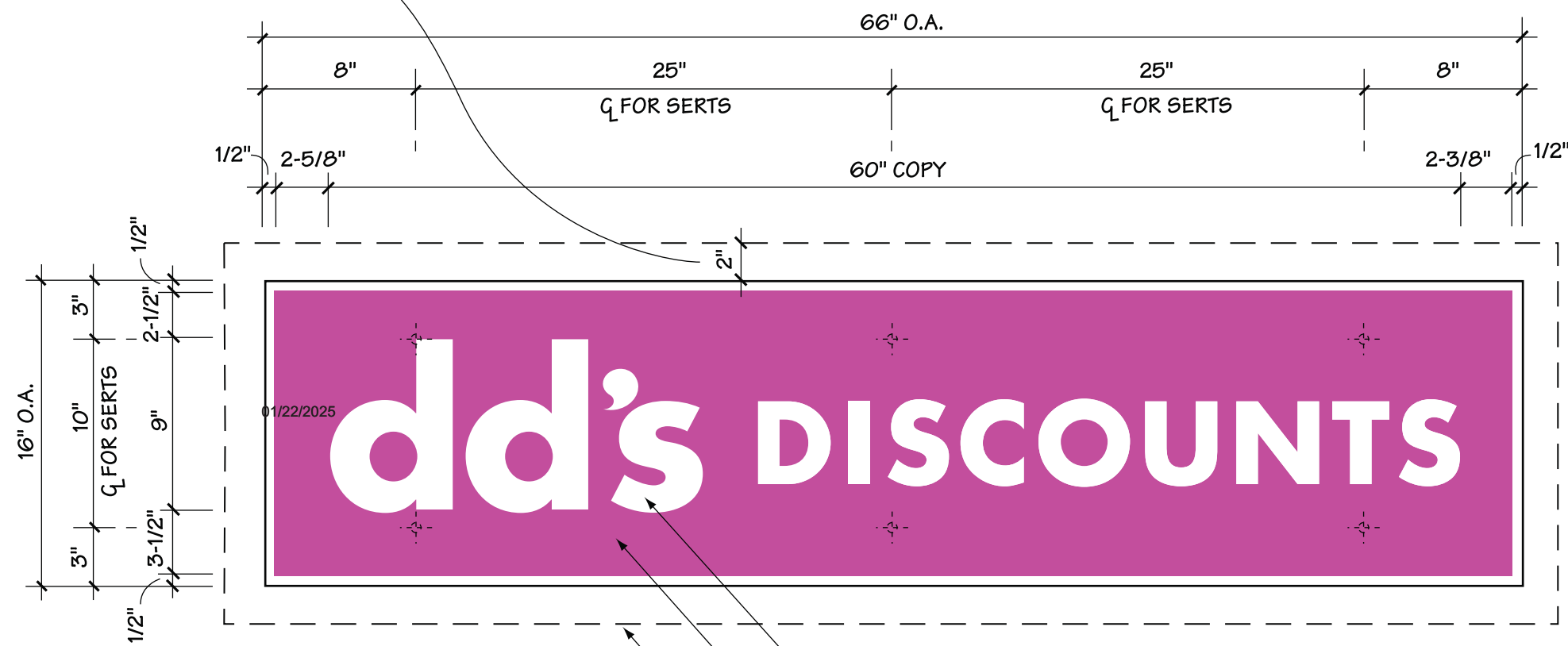
**WP**



SEE NOTES BELOW FOR APPLICABLE CONDITIONS

- 5/16" DIA. X 3" DEEP HOLE IN WALL TYPICAL OF SIX (6).
- 1/4-20 X 3" GALV. HANGER BOLT TYPICAL OF SIX (6).
- GE CONSTRUCTION SCS 1200 SILICONE SEALANT
- TYPICAL 1/4-20 STEEL THREAD SERT
- T-NUT TYPICAL OF SIX (6)
- EXISTING WALL
- 16"H X 66"W X 3/4"D SINTRA WITH 3M TRANSLUCENT 3M 3630-118 INTENSE MAGENTA VINYL OVERLAY

**INSTALLATION INSTRUCTIONS:**  
 DRILL SIX (6) 5/16" DIA. X 3" DEEP HOLES INTO WALL AS PER PATTERN.  
 SCREW 1/4-20 MACHINE-THREAD END OF GALV. FURNITURE BOLTS INTO EMPTY T-NUTS IN BACK OF PLAQUE UNTIL THEY CONTACT THE PVC. (DO NOT OVER TIGHTEN).  
 FILL HOLES IN WALL, COAT SCREW-THREAD ENDS OF FURNITURE BOLTS AND BACK OF PLAQUE WITH GE CONSTRUCTION SCS 1200 SILICONE SEALANT.  
 MOUNT PLAQUE ONTO WALL PUSHING BOLTS INTO HOLES UNTIL PLAQUE IS FLUSH AGAINST WALL SURFACE.



**2 SECTION AT MOUNT**

SCALE: 1" = 1"

**1 ENTRANCE LOGO PLAQUE ELEVATION**

SCALE: 1-1/2" = 1'-0"

**NOTES:**  
 SEE SHEET S1 FOR PLAQUE LOCATIONS.  
 BLAIR IMAGE ELEMENTS TO SUPPLY PLAQUES, HARDWARE AND INSTALLATION PATTERNS.  
 MOUNTING DETAIL MAY VARY ACCORDING TO TYPE OF WALL CONSTRUCTION: LANDLORD'S CONTRACTOR TO VERIFY CONDITIONS.  
 IF WALL SURFACE IS UNEVEN (EXAMPLE: SPLIT FACE BLOCK OR RIVER ROCK), THEN KNOCK DOWN ROUGH SURFACE 2" BEYOND WALL PLAQUE, SO THAT THE PLAQUE WILL SIT FLUSH AGAINST WALL.

**EXHIBIT** \_\_\_\_\_  
**PAGE** \_\_\_\_\_ **OF** \_\_\_\_\_

<p>The information contained herein is intended to express design intent only. This original design is the sole property of Blair Image Elements. It cannot be reproduced, copied or exhibited, in whole or in part, without first obtaining written consent from Blair Image Elements. Blair Image Elements is not responsible for dimensions or notes outside of Blair Scope of Work.</p> <p><b>blair</b> IMAGE ELEMENTS</p> <p><b>AD-DDD102628</b> </p>	<p><b>dd's</b> <b>DISCOUNTS</b> LADIES · KIDS · MEN · SHOES · HOME</p>	<p><b>#5564 Fayetteville(Combo #731, NC</b>        Cross Creek Plaza        NWC All American Freeway &amp; Skibo Road        Fayetteville, NC 28303</p>	<p>drawn _____ 03/18/26</p>	<p><b>RB-E</b> <b>SHEET</b> <b>EL</b></p>
--	--	---	-----------------------------	---