



# Parks & Recreation Updates

*August 2025*



- Upgrade existing parks to reflect best practices in park design for:
  - Diversity of park amenities
    - New splash pad
  - Maintenance
    - Pour in place rubber progressively replacing wood chips throughout system
  - ADA + inclusivity
    - Playground replacement for Gilmore Adaptive Rec, additional inclusive amenities for other parks
  - Shade + comfort
    - Council approved shade structure funding
  - Placemaking
    - Converted pickleball courts





# New Splash Pad





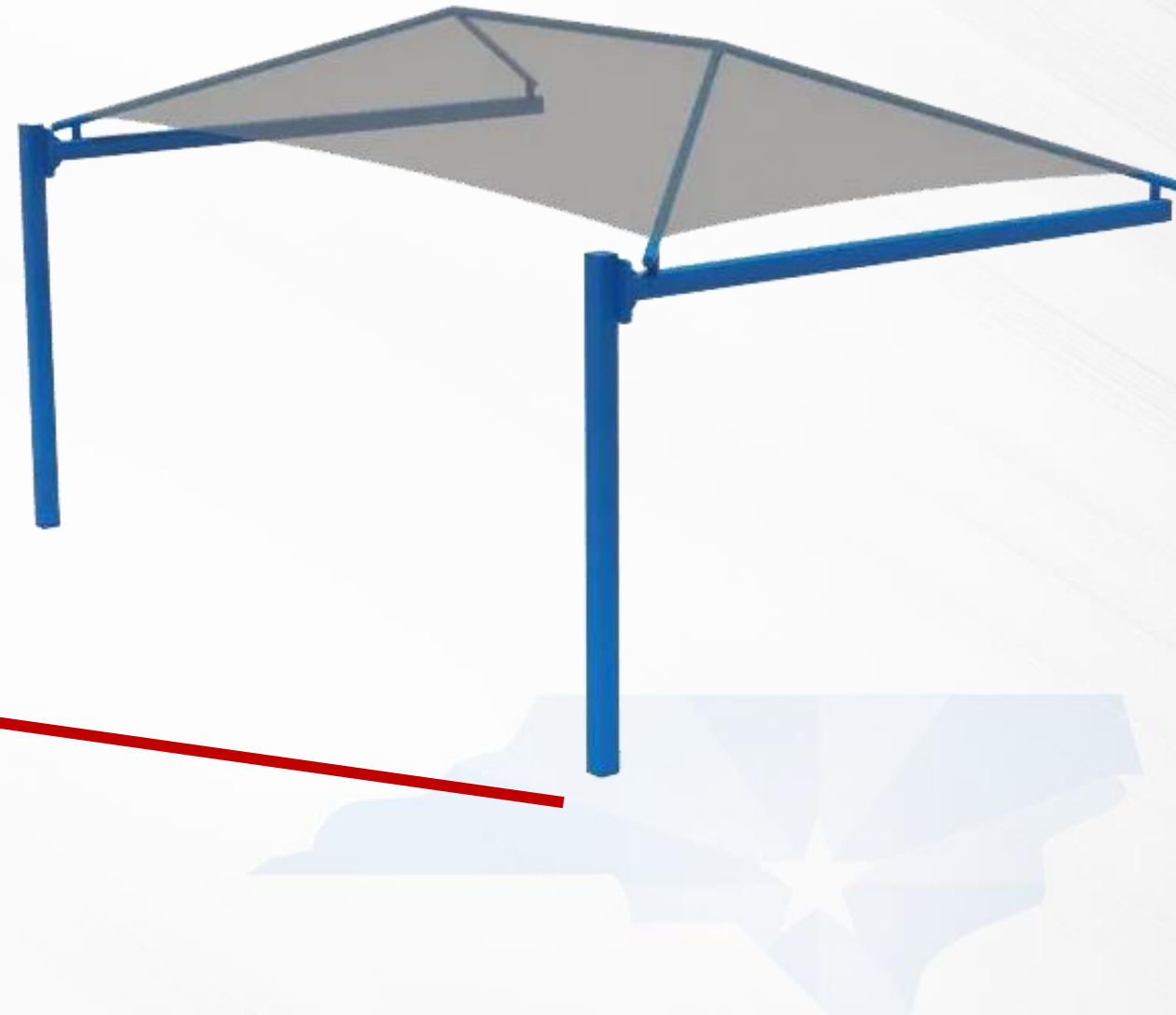




# Tokay Park

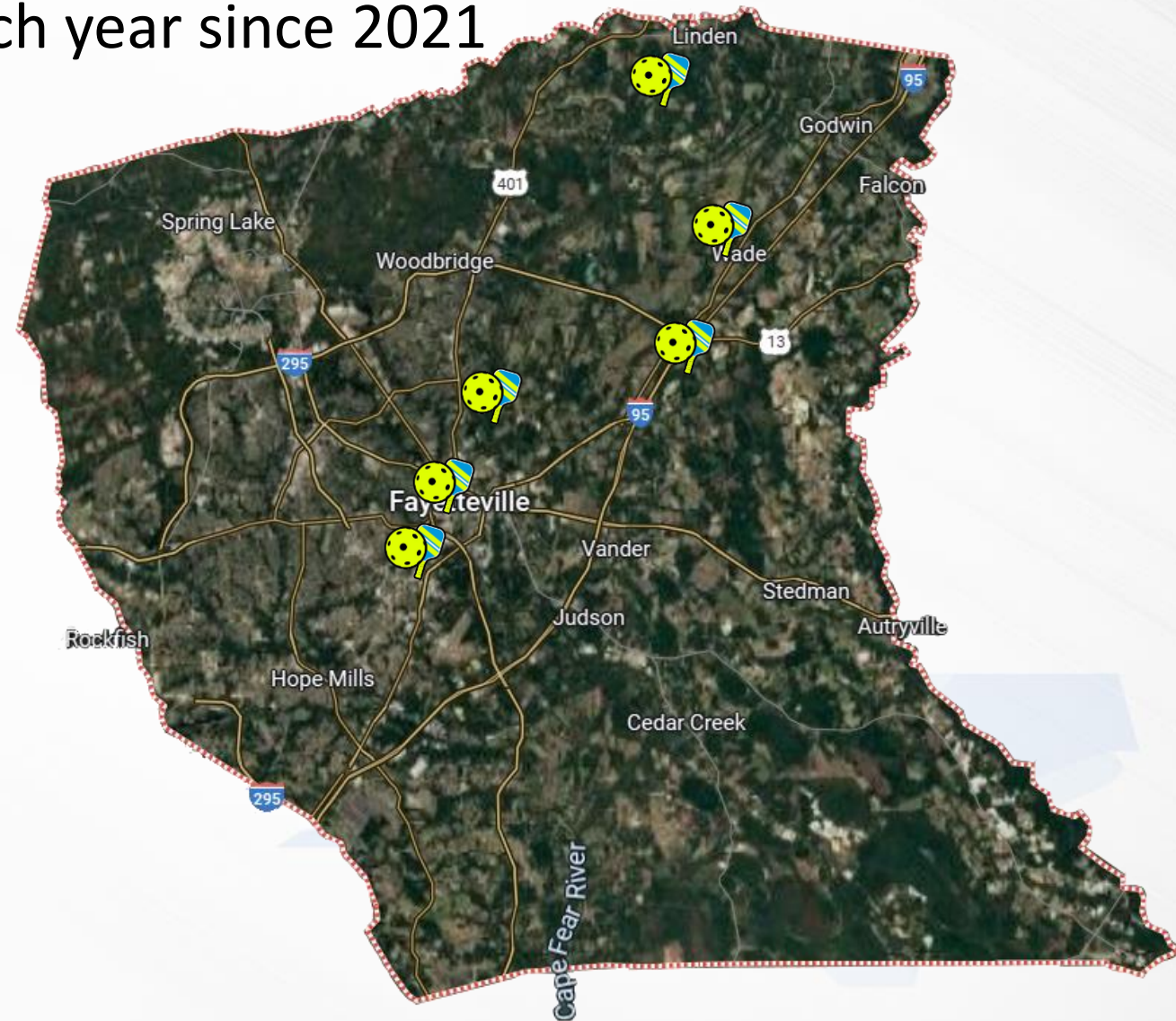


# Shade Structures





- Fastest growing sport in the U.S., each year since 2021
- City Park Locations
  - Massey Hill
  - Rowan Street
- County Park Locations
  - Eastover
  - Linden
  - Wade

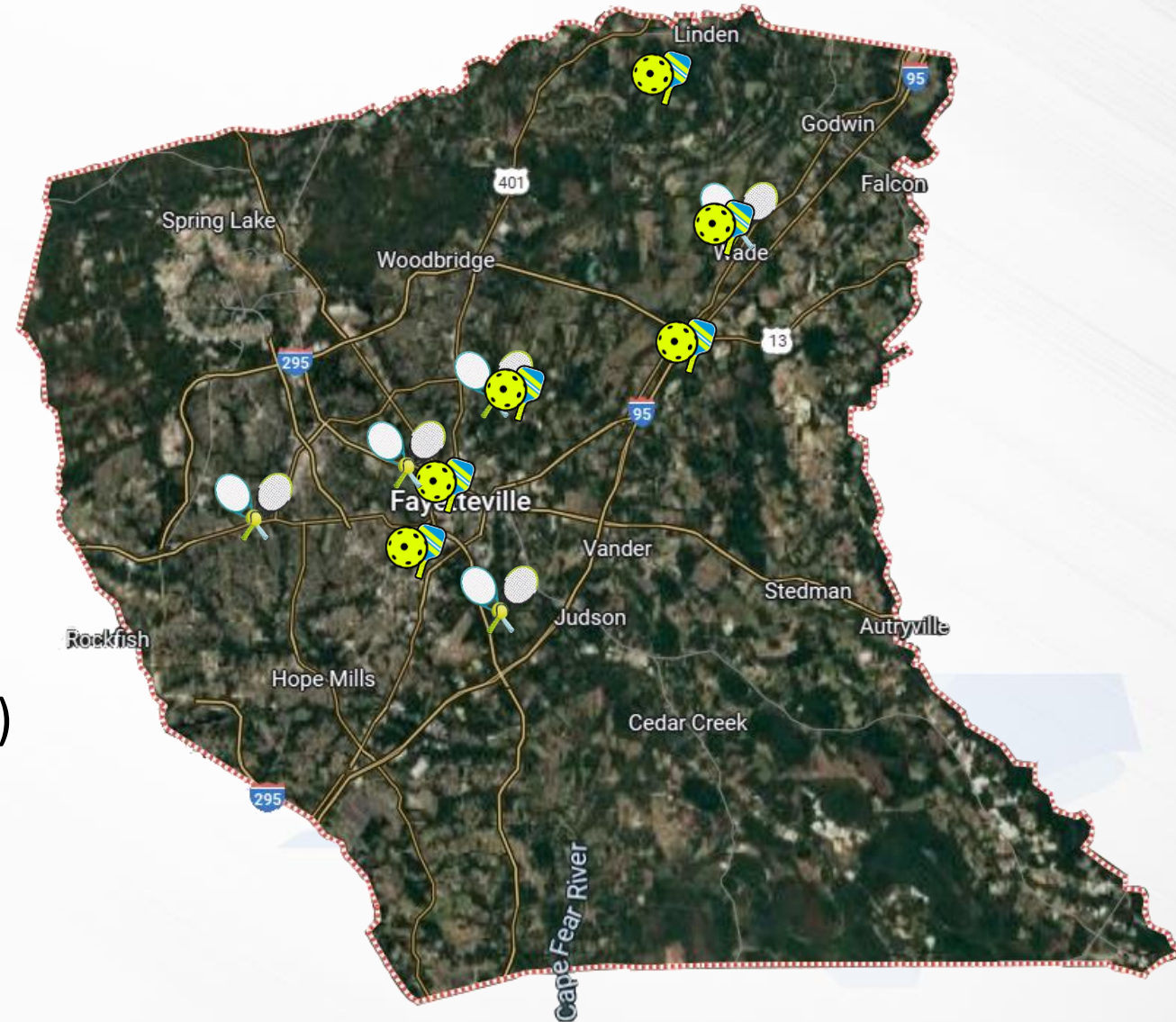


- City Park Locations

- Lake Rim Tennis Courts (2)
- Massey Hill Pickle Ball (6)
- Mazarick Park Tennis Courts (8)
- Rowan Street Pickle Ball (8)
- Tokay Park Tennis Courts (6)

- County Park Locations

- Arnette Park Tennis Courts (8)
- Eastover Pickle Ball (6)
- Linden Pickle Ball (2)
- Wade Pickle Ball (1) & Tennis Courts (1)







[FayettevilleNC.gov](http://FayettevilleNC.gov)