

VICINITY MAP (N.T.S.)

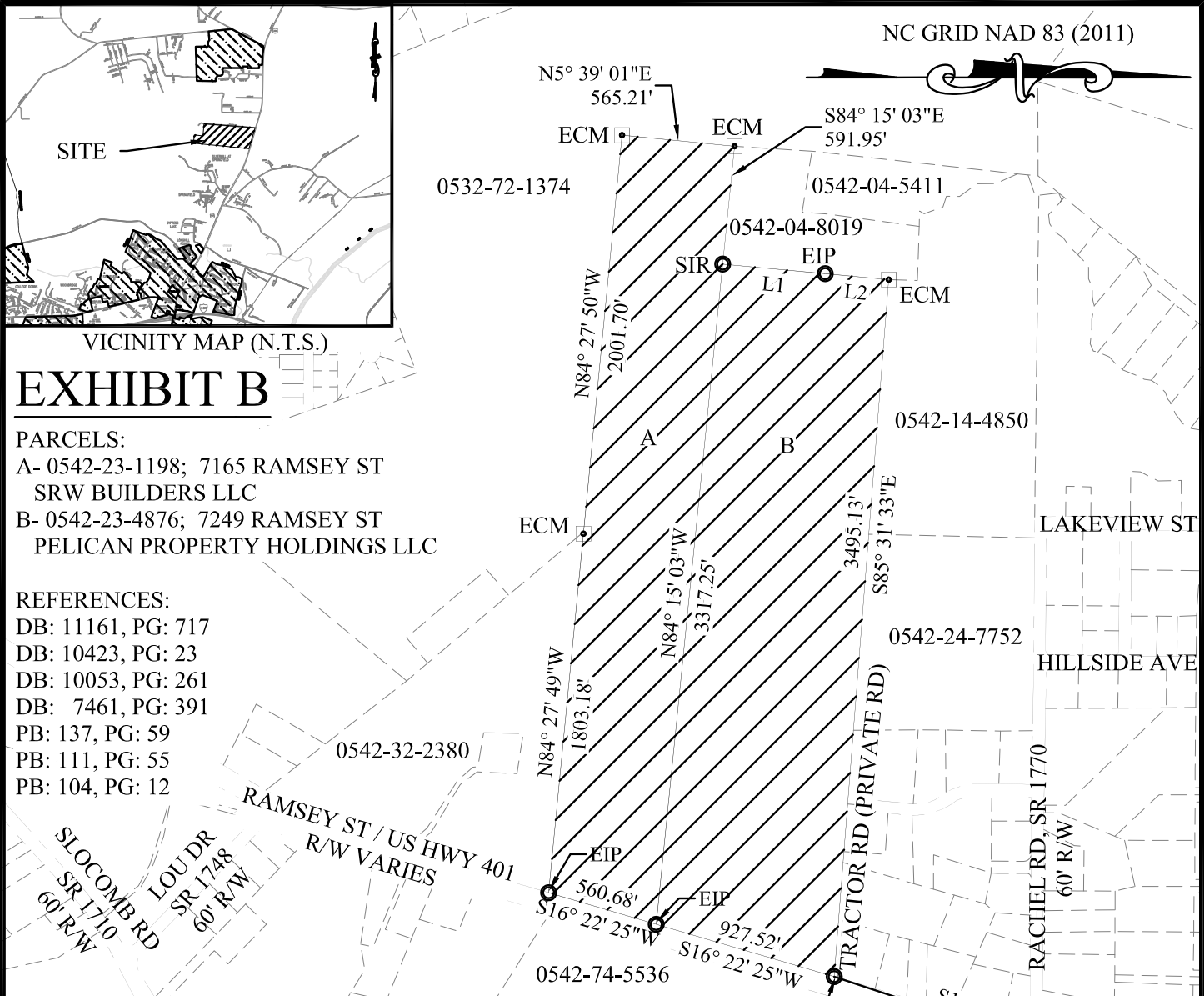
EXHIBIT B

PARCELS:

- A- 0542-23-1198; 7165 RAMSEY ST
SRW BUILDERS LLC
- B- 0542-23-4876; 7249 RAMSEY ST
PELICAN PROPERTY HOLDINGS LLC

REFERENCES:

- DB: 11161, PG: 717
- DB: 10423, PG: 23
- DB: 10053, PG: 261
- DB: 7461, PG: 391
- PB: 137, PG: 59
- PB: 111, PG: 55
- PB: 104, PG: 12



LEGEND

- ANNEXATION AREA
- CITY OF FAYETTEVILLE LIMITS
- R/W LINE
- PARCEL LINE
- HWY - HIGHWAY
- DB - DEED BOOK
- R/W - RIGHT OF WAY
- PB - PLAT BOOK
- MON - MONUMENT
- SIR - SET IRON ROD
- EIP - EXISTING IRON PIPE
- N.T.S. - NOT TO SCALE
- ECM - EXISTING CONCRETE MONUMENT
- NCGS - NORTH CAROLINA GEODETIC SURVEY

THIS MAP MAY NOT BE A CERTIFIED SURVEY AND HAS NOT BEEN REVIEWED BY A LOCAL GOVERNMENT AGENCY FOR COMPLIANCE WITH ANY APPLICABLE LAND DEVELOPMENT REGULATIONS AND HAS NOT BEEN REVIEWED FOR COMPLIANCE WITH RECORDING REQUIREMENTS FOR PLATS.

L1	N5° 20' 10"E	515.02'
L2	N5° 20' 10"E	318.85'

NCGS MON "ROSE"
NAD 83(2001)
N=525,753.49
E=2,044,989.74



PUBLIC SERVICES DEPARTMENT
ENGINEERING DIVISION
433 HAY ST. 28301
(910) 433-1656

PROPOSED ANNEXATION
A. 0542-23-1198, 7165 RAMSEY ST ±49.41 AC
B. 0542-23-4876, 7249 RAMSEY ST ±68.16 AC
±117.57 ACRES TOTAL

SHEET 1 OF 1

ANNEXATION DATE: _____

EFFECTIVE DATE: _____

DATE **11/01/2021** DRAWN BY **RSH**

SCALE **1" = 800'** CK'D BY **DN**