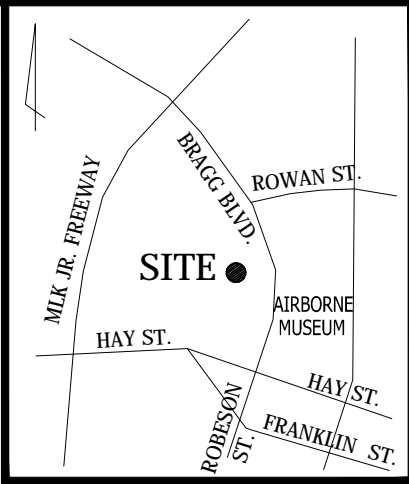
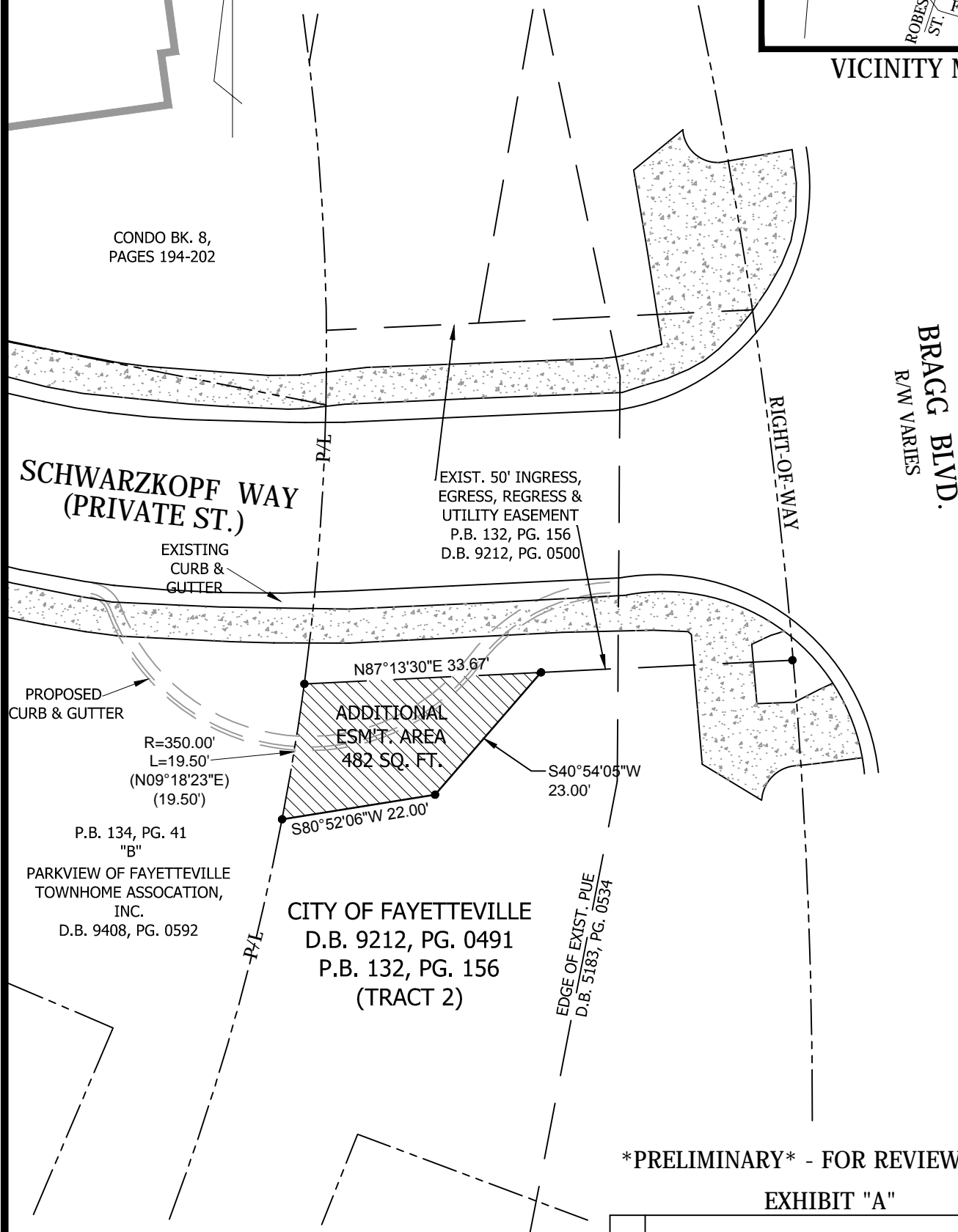


I, Randall S. Williams, certify that this map was drawn under my supervision (deed description recorded in Book 9212, Page 0491); that the boundaries not surveyed are clearly indicated as drawn from information found in Plat Book 132, Page 156; that the ratio of precision as calculated is 1:15,000; that this map meets the requirements of The Standards of Practice for Land Surveying in North Carolina (21 NCAC 56.1600). Witness my original signature, license number and seal this 22nd day of August, 2017.

N.C. License No. L-3307



VICINITY MAP



NEW PERM. ESM'T. AREA REQD. = 482 SQ. FT.

LEGEND

- LINES SURVEYED
- - - LINES BY DEED/PLAT
- - - EX. ESM'T. LINE
- NEW ESM'T. LINE

- PLAT CORNER
- EASEMENT CORNER

Based on a partial survey by:
MOORMAN, KIZER & REITZEL, INC.
115 BROADFOOT AVE.
FAYETTEVILLE, N.C. 28305

PRELIMINARY - FOR REVIEW ONLY
EXHIBIT "A"

SYM	DESCRIPTION	BY
REVISIONS		
ADDITIONAL EASEMENT ACROSS PROPERTY OF THE CITY OF FAYETTEVILLE		
DRAWN BY	RSW	DATE AUGUST 22, 2017
CHECKED BY	J.M.K., JR.	SCALE 1"= 20'
APPROVED BY	A	1 of 1