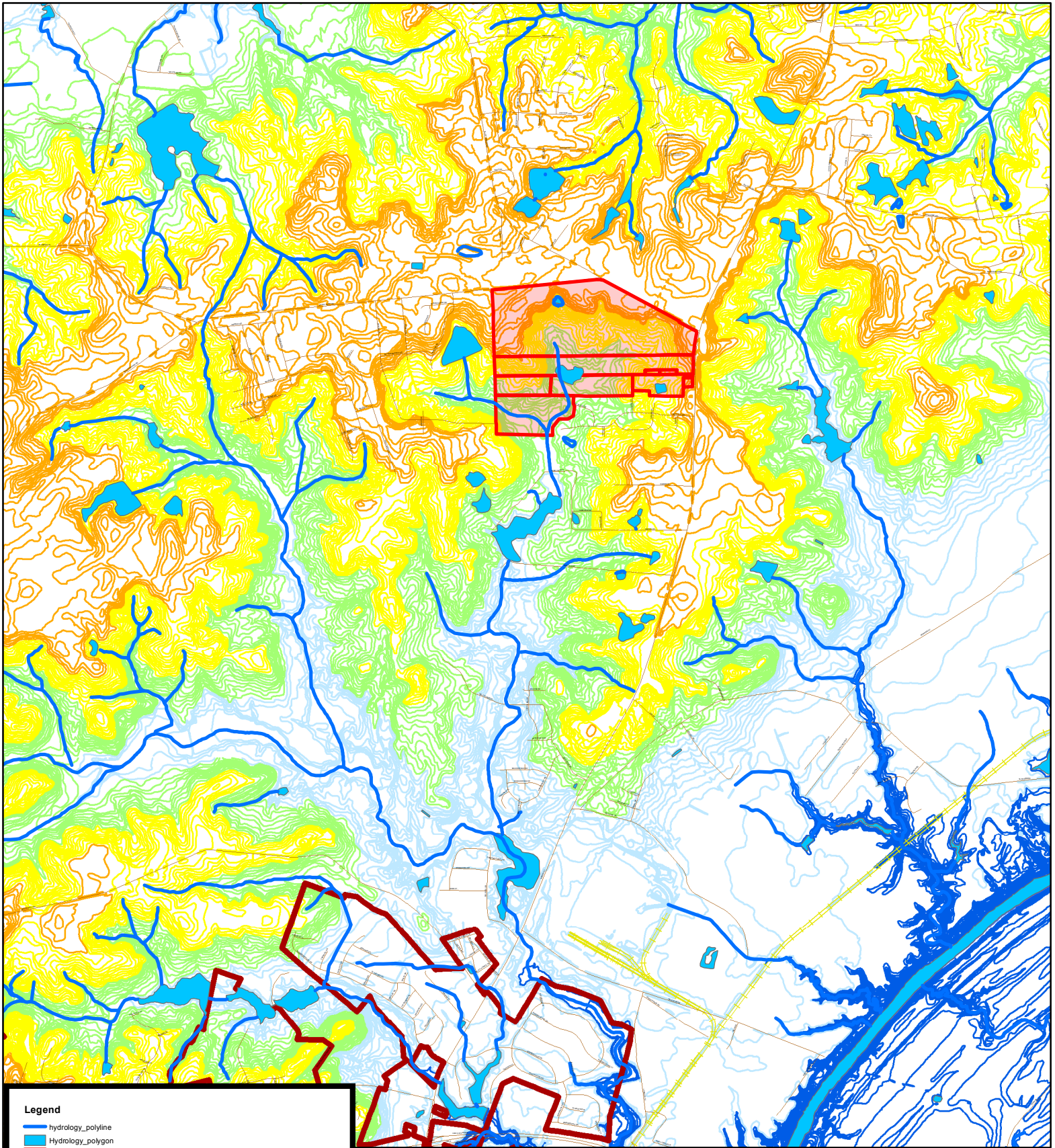


**Area Proposed for Mixed-Use Development-North of the City of Fayetteville
(Map Shows Natural Features Such as Topography, Streams and Lakes)**



Legend

- hydrology_polyline
- Hydrology_polygon
- Site of Proposed Mixed Use Development (Cumberland County Zoning Case P15-46)
- Site of Proposed Mixed Use Development (Cumberland County Zoning Case P15-46)
- Fayetteville_City_Limits-Exported_by_DNash_On_021317-thru_Annex_566
- Streets-(From Streets 2013 Folder-18603 records)
- NC_Rail_Track
- Cape Fear River

County Topography

ELEVATION

- 0 - 104 Feet
- 105 - 148 Feet
- 149 - 186 Feet
- 187 - 226 Feet
- 227 Feet and Above

Notes:

(1) Map last updated on 12/6/17
by staff of Development Services Department, City of Fayetteville.

0 0.125 0.25 0.5 0.75 1 Miles

