

MIDDLE CREEK

BILL HEFNER
ELEM SCHOOL



ENGINEERING & INFRASTRUCTURE DEPT.
CIVIL ENGINEERING DIVISION
433 HAY ST. 28301
(910) 433-1656

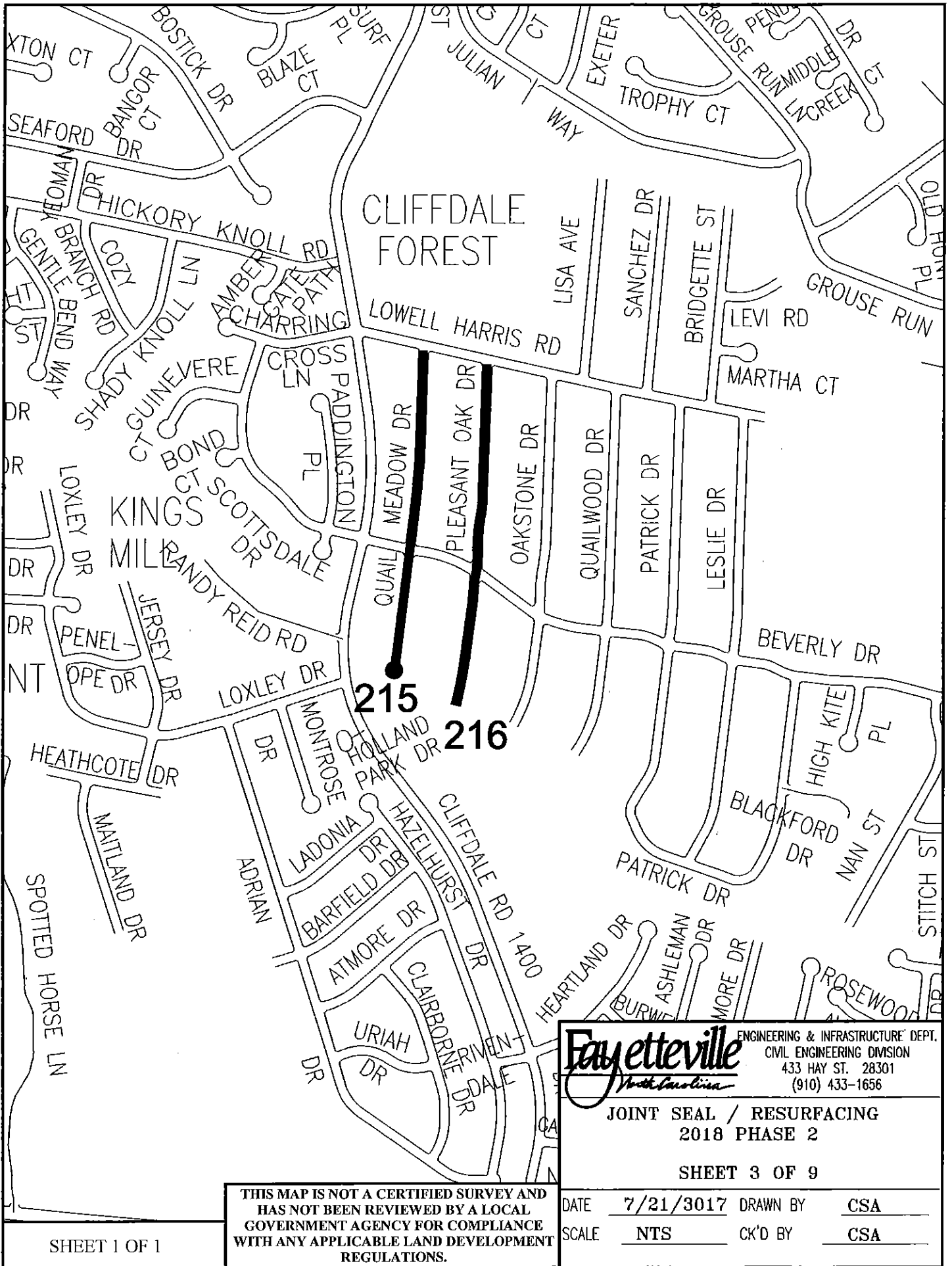
JOINT SEAL / RESURFACING
2018 PHASE 2

SHEET 2 OF 9

THIS MAP IS NOT A CERTIFIED SURVEY AND
HAS NOT BEEN REVIEWED BY A LOCAL
GOVERNMENT AGENCY FOR COMPLIANCE
WITH ANY APPLICABLE LAND DEVELOPMENT
REGULATIONS.

DATE	7/21/3017	DRAWN BY	CSA
SCALE	NTS	CK'D BY	CSA

SHEET 1 OF 1



Fayetteville
North Carolina

ENGINEERING & INFRASTRUCTURE DEPT.
CIVIL ENGINEERING DIVISION
433 HAY ST. 28301
(910) 433-1656

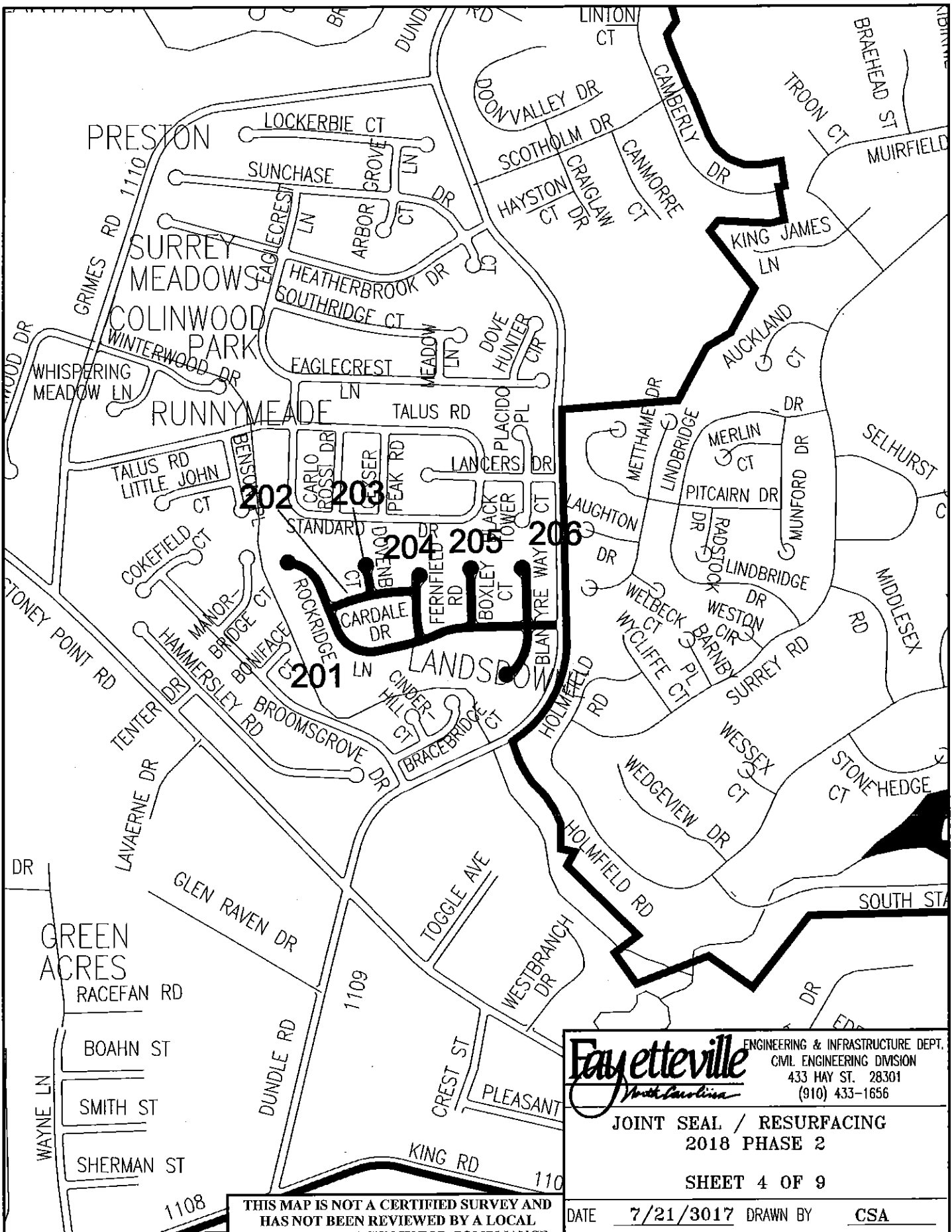
**JOINT SEAL / RESURFACING
2018 PHASE 2**

SHEET 3 OF 9

THIS MAP IS NOT A CERTIFIED SURVEY AND
HAS NOT BEEN REVIEWED BY A LOCAL
GOVERNMENT AGENCY FOR COMPLIANCE
WITH ANY APPLICABLE LAND DEVELOPMENT
REGULATIONS.


DATE	7/21/3017	DRAWN BY	CSA
SCALE	NTS	CK'D BY	CSA

SHEET 1 OF 1



SHEET 1 OF 1

THIS MAP IS NOT A CERTIFIED SURVEY AND
HAS NOT BEEN REVIEWED BY A LOCAL
GOVERNMENT AGENCY FOR COMPLIANCE
WITH ANY APPLICABLE LAND DEVELOPMENT
REGULATIONS.

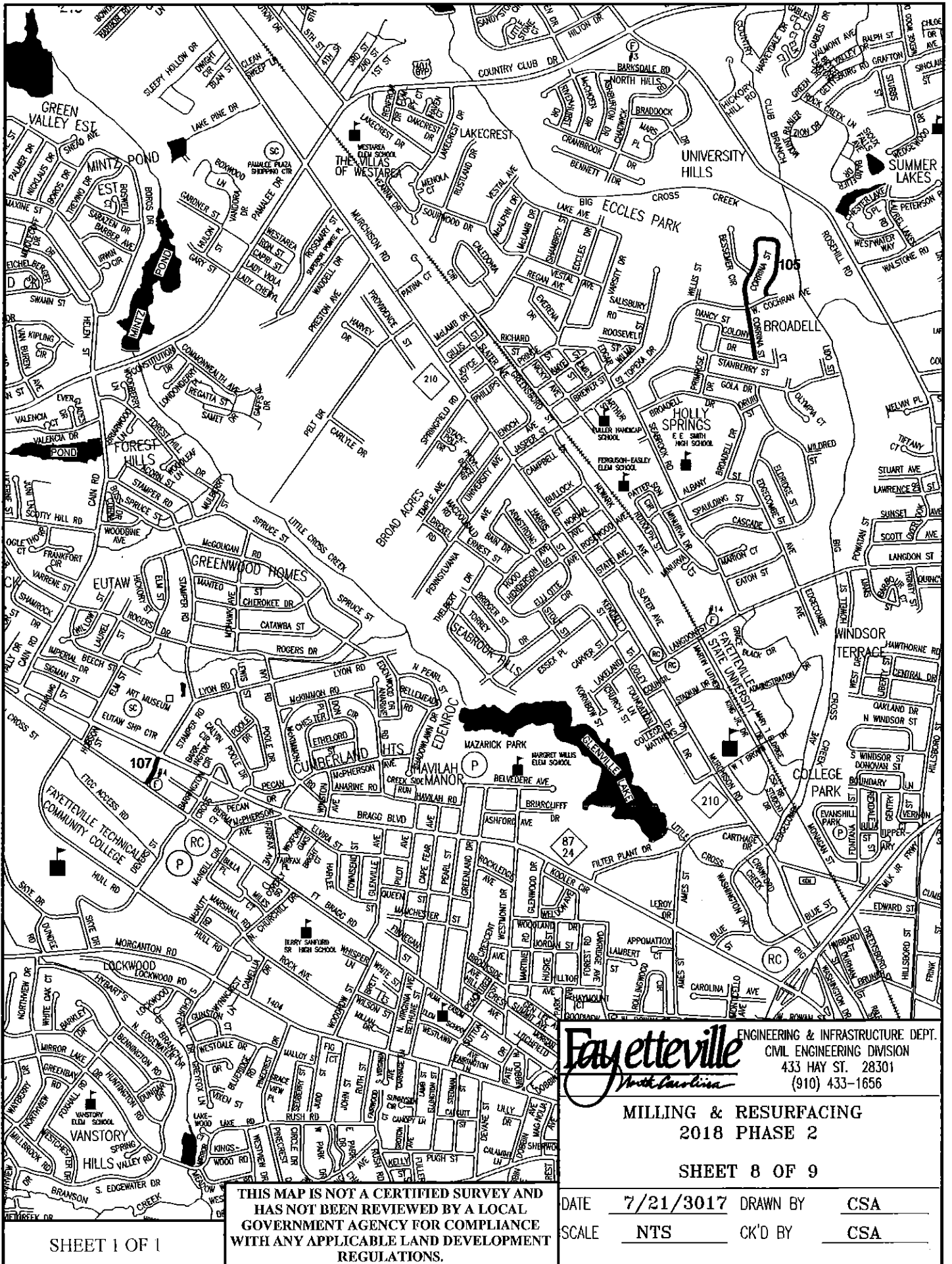


ENGINEERING & INFRASTRUCTURE DEPT.
CIVIL ENGINEERING DIVISION
433 HAY ST. 28301
(910) 433-1656

JOINT SEAL / RESURFACING
2018 PHASE 2

SHEET 4 OF 9

DATE	7/21/3017	DRAWN BY	CSA
SCALE	NTS	CK'D BY	CSA



SHEET 1 OF 1

THIS MAP IS NOT A CERTIFIED SURVEY AND
HAS NOT BEEN REVIEWED BY A LOCAL
GOVERNMENT AGENCY FOR COMPLIANCE
WITH ANY APPLICABLE LAND DEVELOPMENT
REGULATIONS.

Fayetteville
North Carolina

ENGINEERING & INFRASTRUCTURE DEPT.
CIVIL ENGINEERING DIVISION
433 HAY ST. 28301
(910) 433-1656

**MILLING & RESURFACING
2018 PHASE 2**

SHEET 8 OF 9

DATE	7/21/3017	DRAWN BY	CSA
SCALE	NTS	CK'D BY	CSA

