

Greater Fayetteville United Social Capital Community Survey

...helping organizations make better decisions since 1982

Findings Report

Submitted to Greater Fayetteville United

by:

ETC Institute
725 W. Frontier Circle
Olathe, Kansas 66061

September 2017



Contents

Executive Summary i

Section 1: Charts and Graphs..... 1

Section 2: Gap Analysis 27

Section 3: Tabular Data.....42

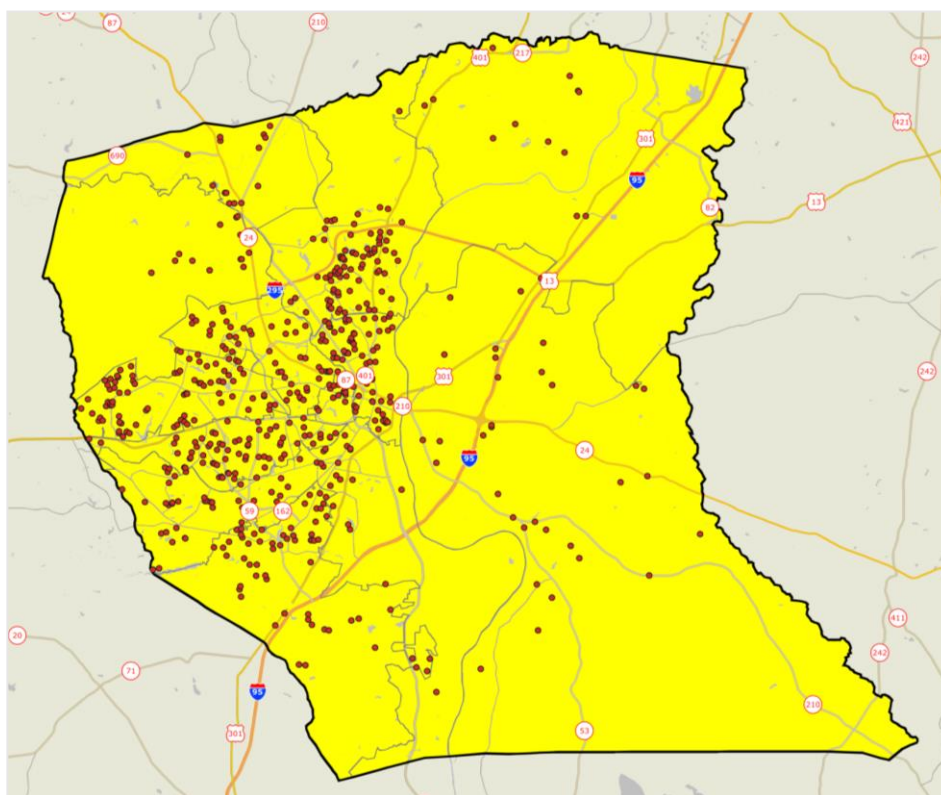
Section 4: Survey Instrument.....89

Executive Summary

Overview and Methodology

ETC Institute administered a Social Capital Community Survey for Greater Fayetteville United during May and June of 2017. The purpose of the survey was to measure trust and relationships among citizens in the area, with the goal of improving community engagement. This will ultimately improve the quality of life of citizens in the area.

A seven-page survey was mailed to a random sample of households in the City of Fayetteville and Cumberland County. Approximately seven days after the surveys were mailed, residents who received the survey were contacted by e-mail and/or phone. Those who indicated that they had not returned the survey were given the option of completing it online or by phone. Of the household that received a survey, a total of 615 surveys were completed. The results for the random sample of 615 households have a precision of at least $\pm 3.9\%$ at the 95% level of confidence. There were no statistically significant differences in the results of the survey based on the method of administration (mail vs. phone vs. online). The map to the right show the location of all households that completed a survey.



The percentage of “don’t know” responses has been excluded from many of the graphs shown in this report to facilitate valid comparisons

between services. When the “don’t know” responses have been excluded, the text of this report will indicate that the responses have been excluded with the phrase “who had an opinion” or “who provided a response.” The percentage of “don’t know” responses has been included in the tabular data in Section 3 of this report.

This report contains:

- a summary of the methodology for administering the survey and major findings
- charts showing the overall results for most questions on the survey
- gap analysis that identifies factors that contribute to differences in perceptions and attitudes
- tables that show the results for all questions on the survey
- a copy of the survey instrument

Cross-tabular data showing survey results by various demographic variables and GIS maps are published separately as Appendices A and B.

Questions 29 and 31 were asked several weeks after the rest of the survey was completed. These two questions were asked to a different group of residents than the rest of the survey. However, the demographics of respondents to questions 29 and 31 were very similar to those residents who completed the entire survey.

Listed below and on the following pages are major survey findings.

Major Findings

Perceptions of Trust Among Citizens

When asked to give their level of trust among various groups of people, 66% of residents who had an opinion indicated they trusted law enforcement in their community “a lot” or “some.” Other groups for which citizens have “a lot of trust” or “some trust” include: people who work in the stores where they shop (55%), people in their neighborhood (54%), and Cumberland County government officials (40%). The group residents trusted least were federal government officials (29% indicated “a lot of trust” or “some trust”).

How Often Citizens Think They Can Trust Various Organizations

Thirty-five percent (35%) of respondents who had an opinion thought they could trust City/Town Government “always” or “most of the time”; only 12% felt they could never trust City/Town Government, and the remaining 53% of respondents trust City/Town Government “some of the time.” Other types of government organizations that citizens thought they could trust “always” or “most of the time” include: County Government (32%), State Government (27%), and Federal Government (26%).

Frequency That Residents Have Participated in Various Activities

Residents were asked how many times in the past 12 months they participated in various activities. The frequency of participation ranged from “once a week or more” to “never.” The activities in

which respondents participated most often during the past 12 months were: 1) attending a religious service, 2) having friends over to their home, 3) having someone of a different race in their home, and 4) being in the home of someone from a different neighborhood. The activities in which residents participated least often were attending a public meeting for City/Town affairs and donating blood.

Organizations/Causes Where Citizens Have Volunteered

Seventy-five percent (75%) of respondents have volunteered in the past 12 months. The types of organizations and causes that respondents have volunteered to do work with most often in the past 12 months include: religious organizations (50%), helping the poor (38%), school or youth program (33%), and helping the elderly (28%). Respondents were also asked how many people from the groups they volunteered with were of the same gender, ethnicity and level of education as themselves; 29% said “all” or “most” were of the same gender, 29% said “all” or “most” were of the same ethnicity, and 26% responded that “all” or “most” were of the same level of education.

Obstacles or Barriers to Being Involved with the Community

Seventy-seven percent (77%) of respondents indicated that there was some type of obstacle or barrier that makes it difficult for them to be involved with the community. By far the top two obstacles/barriers mentioned were an inflexible or demanding work schedule (40%), and a lack of information (36%). Other obstacles/barriers include: inadequate resources/income (19%), feeling somewhat unwelcome (17%), and concerns for safety (15%).

Religious Preference and Attendance at Religious Services

When residents were asked their religious preference, 43% indicated “other Christianity.” Other preferences include: Protestantism (25%), Catholicism (11%), Buddhism (1%), Islam (1%), and Judaism (1%). With the exception of weddings and funerals, nearly half (46%) of the residents who provided a response indicated they attend religious services at least once a week; 8% attend almost every week, 8% attend once or twice a month, 16% attend a few times per year, 11% attend less than a few times per year, and 11% never attend religious services.

During the past 12 months, 27% of those surveyed who provided a response indicated their household contributed \$1,000 or more to secular and religious causes. Fourteen percent (14%) contributed between \$500 and \$999, 19% contributed \$100 to \$499, and 15% contributed less than \$100. Fourteen percent (14%) of respondents indicated their household did not contribute to secular or religious causes during the past 12 months.

Healthcare Coverage and Overall State of Health

Most residents surveyed (89%) who provided a response indicated they were covered by some type of health insurance, whether through an employer, Medicaid, Medicare, Affordable Care Act/Obamacare, or private health insurance. Of those 89% with health insurance, 87% felt their coverage was adequate.

When residents were asked to describe their overall state of health, 39% who had an opinion responded “excellent” or “very good.” Thirty-four percent (34%) said their overall health was “good,” 21% said “fair,” and 6% felt their overall health was “poor.” Nearly three-fourths (72%) who had an opinion responded that, all things considered, they were “very happy” or “happy.” Eighteen percent (18%) were “neutral,” 9% were “not very happy” and 2% were “not happy at all.”

Internet Access

Most residents (93%) who provided a response indicated they have access to the internet. Of those, 17% said they are involved in some group that primarily meets over the internet. When asked how they typically access the internet, 77% said it is through their home desktop or laptop computer and 66% indicated it is through their mobile phone with a data plan. Only 6% of those who access the internet do so through a public computer (i.e. at the library).

On average, 20% of respondents who have internet access indicated they spend at least 21 hours per week online, excluding work-related activities. Thirty-two percent (32%) of those with internet access indicated they have accessed City or County information online at least once a month in the past 12 months.

Job and Income Outlook

Thirty-nine percent (39%) of respondents think it would be harder for someone like themselves to find a job six months from now in Cumberland County, compared to only 9% who felt like it would be easier to find a job. Thirty-four percent (34%) felt it would be about the same, and the remaining 19% are not sure.

When asked about future income, 52% thought their income would be about the same six months from now; 24% thought it would be higher, 6% thought their income would be lower, and the remaining 18% are not sure.

Perceptions of Cumberland County and Its Municipalities

Residents were asked to rate their perceptions of Cumberland County and its municipalities. Nearly three-fourths (74%) rated law enforcement in the County as “excellent,” “very good” or “good.” Other municipalities or characteristics that were given high positive ratings include: trash removal (74%), Parks and Recreation (64%), and overall quality of life (60%). The areas that received the lowest positive ratings were streets and roads (42%) and public/mental health (42%).

Eighty-six percent (86%) of respondents feel that Cumberland County and its municipalities are an “excellent,” “very good,” or “good” place to live for military affiliated. Sixty-two percent (62%) feel Cumberland County and its municipalities are an “excellent,” “very good,” or “good” place to live for families with children under 18, and 61% feel it’s an “excellent,” “very good,” or “good” place to live for residents from other parts of the U.S. Only 36% feel Cumberland County and its municipalities are an “excellent,” “very good,” or “good” place to live for young adults entering the workforce, and only 44% feel it’s an “excellent,” “very good,” or “good” place to live for LGBTQ.

Other Findings

- More than three-fourths (76%) of residents who provided a response are either “very interested” or “somewhat interested” in politics and national affairs; 14% are “slightly interested,” 5% are “not interested,” and 6% are “not at all interested.” Ninety-three percent (93%) who provided a response indicated they are registered to vote.
- Thirteen percent (13%) of residents who had an opinion described their personal political outlook as “very conservative;” 26% described themselves as “moderately conservative,” 36% are “middle-of-the-road,” 18% are “moderately liberal,” and 7% are “very liberal.” The remaining 2% had other political outlooks.
- Forty-four percent (44%) of respondents who had an opinion indicated that 91-100% of their neighbors were of the same race/ethnicity as themselves in the neighborhood where they grew up. Only 9% of residents stated that 91-100% of their neighbors are of the same race/ethnicity as themselves in their neighborhood currently.
- Twenty-six percent (26%) of respondents have served as an officer or served on a committee of a local club or other organization in the past 12 months.
- Fifty-five percent (55%) of respondents indicated that the internet is their primary form of information and entertainment; 49% indicated that television is their primary form of information and entertainment.
- Fifty-three percent (53%) of respondents agree that members of different race, cultures, and ethnicities have the same educational opportunities as them, but only 41% agree that members of different race, cultures, and ethnicities have the same job opportunities as them. Thirty-eight percent (38%) agree that members of different race, cultures, and ethnicities receive the same treatment in the justice system as them.
- Forty-five percent (45%) of respondents agree that the Cumberland County school system promotes positive relations with students of diverse backgrounds. Only 11% agree that all Cumberland County schools have the same resources.

Gap Analysis

Gap analysis is a tool that identifies potential ways of increasing positive perceptions and attitudes among residents by identifying factors that contribute to differences in perceptions and attitudes. Gap analysis compares the mean agreement ratings from various groups of residents to gain better insight on how the group reacted to each set of questions. By taking action to address items with the greatest gaps, community leaders can minimize disparities in the community which should positively influence residents over time. Section 2 of this report contains a more detailed description of the gap analysis methodology, as well as tables for many different variables that ETC Institute included in the gap analysis. Listed below and on the following pages are a summary of the major conclusions that ETC Institute drew from the gap analysis.

Engagement in the Community

ETC Institute performed a gap analysis exploring the relation between respondents who are more engaged in the community compared to those who aren't as engaged. ETC Institute evaluated various items to determine the level of residents' engagement in the community, such as whether or not residents have served as an officer or served on a committee of a local organization, how frequently residents have worked on a community project, and how often they've volunteered their time. Respondents who are more engaged in the community are much more trusting of people in general, more trusting of people in their neighborhood, and more trusting of people of various races, cultures, and ethnicities than those who are not as engaged in the community. However, level of trust in the government, at the local, state, and federal level, has little impact on respondent's level of engagement in the community. Those who are more engaged in the community are also more likely to consider themselves as "very happy" and rate their health as "excellent" than those who are less engaged. Those more engaged in the community are also more likely to attend a religious service more frequently.

Overall Happiness of Residents

ETC Institute performed a gap analysis comparing respondents who indicated they are "very happy", compared to those who are "not happy" or "not very happy". Respondents who were "very happy" were more likely to have attended a religious service, attended a club or organizational meeting, worked on a community project, and volunteered their time than those whose indicated being "not happy" or "not at all happy". Respondents who indicated they were "very happy" were more trusting of other groups and were more likely to think members of different races, cultures, and ethnicities in Cumberland County are treated equally or the same as they are. The most significant trust gaps included: the overall trust of Cumberland County government officials, law enforcement in local communities, state government officials, and other people in general. Respondents who indicated they were "very happy" were also much more likely to agree that the school system provides positive relations with students of diverse backgrounds. Overall, respondents that indicated they were "very happy" indicated more positive overall perceptions of Cumberland County and its municipalities.

Overall Health of Residents

ETC Institute performed a gap analysis comparing respondents who indicated their health is "excellent", compared to those who indicated their health is "fair" or "poor". Respondents who rated their health as being "excellent" were more likely to have attended a club or organizational meeting, volunteered their time, and had people over to their home (friends, someone of a different race, someone from a different neighborhood) than those whose indicated being "not happy" or "not at all happy". Another large gap between respondents who indicated their health was "excellent" and those who indicated their health was "fair" or "poor" was in relation to the form of entertainment and information they most use. Respondents whose health is "excellent" indicated the internet is their primary form of information and entertainment, whereas respondents whose health is "fair" or "poor" indicated television is their primary form of information and entertainment.

Military Affiliation

ETC Institute compared respondents who indicated they had no military affiliation with those who had any (active duty, national guard, reserves, retired, veteran, spouse, or dependent) affiliation. Perhaps the most significant finding when comparing the responses from these two groups was related to the rating of Cumberland County and its municipalities as a place to live for military affiliated individuals. Respondents were asked to rate Cumberland County and its municipalities as a place to live for individuals with military affiliation on a 5-point scale where 5 means excellent and 1 means poor. The mean rating for those respondents who do not have any military affiliation was 3.75, whereas the mean rating for those respondents with a military affiliation was 3.46. Respondents who do not have a military affiliation have a perception that Cumberland County and its municipalities is a great place to live for military affiliated individuals and families, however those with military affiliation do not feel that way. The data implies that ill-conceived perceptions exist in the community suggesting Cumberland County and its municipalities are a great place for those with a military affiliation.

Attending Religious Services

ETC Institute performed a gap analysis comparing responses from those who attend a religious service at least once a week compared to those who attend a religious service only once a year or not at all. Respondents who attend a religious service at least once a week were much more likely to be engaged in the community than those who attend a religious rarely or not at all. In particular, respondents who attend a religious service at least once a week are much more likely to volunteer their time, attend a club or organizational meeting, work on a community project, and attend a public meeting.

Race

ETC Institute performed a gap analysis comparing responses from those who indicated they were “White” and those who indicated they were “Black or African American” in order to determine if there were any disparities in opinions, perceptions, and attitudes. Overall the findings of the gap analysis indicate that there is little difference between the two groups of respondents. However, respondents who indicated they were “White” were significantly more likely to trust law enforcement in their local community, have positive perceptions of law enforcement, and believe that members of different races, cultures, and ethnicities in Cumberland County receive the same treatment in the justice system. There is a clear indication that respondents who identify as “White” have a much more positive view of law enforcement and the justice system than those who identify as “Black or African American.”

Perceptions of the ease of finding a job in Cumberland County

ETC Institute performed a gap analysis exploring the relation between respondents who believe it is going to be easier to find a job and respondents who believe it is going to be harder to find a job six months from now. Some of the largest gaps in responses between the two groups were in relation to how respondents rated their perceptions of Cumberland County and its municipalities as a place to live and the opportunities and amenities it provides. Respondents who believe that it is going to be easier to find a job six months from now in Cumberland County had significantly more positive perceptions of Cumberland County and its municipalities as a place to live for young

adults entering the workforce, middle aged-adults, and families with children under 18. These same respondents also had much more positive perceptions relating to the availability of affordable housing in Cumberland County and social services in the County and its municipalities.

Frequency of Participation in Various Activities

Respondents were asked to indicate the frequency at which they participate in 16 different activities. There were significant gaps in the frequency at which each group analyzed participated in all 16 activities. However, race and military affiliation do not seem to have a direct influence on the frequency at which respondents indicated they participated in the various activities. The data suggests that perceptions and attitudes, not a respondent's personal identity, influences the rate at which they participated.

Summary of Key Findings

When analyzing respondents who are currently more engaged in the community compared to those who aren't currently as engaged, ETC Institute found some significant differences, or "gaps" among the groups.

ETC Institute found that respondents who are more engaged in the community are much more trusting of people in general, more trusting of people in their neighborhood, and more trusting of people of various races, cultures, and ethnicities than those who are not as engaged in the community. However, the level of trust in the government, at the local, state, and federal level, seems to have little impact on respondent's level of engagement in the community.

Our analysis also shows that those who are more engaged in the community are also more likely to consider themselves as "very happy" and rate their health as "excellent" than those who are less engaged. We also found that those who are more engaged in the community are much more likely to attend a religious service more frequently than those who are not as engaged. Those who are more engaged in the community are also less likely to indicate that television is their main form of entertainment, and less likely to agree that all schools in the Cumberland County School System have the same resources.

Overall the demographics of respondents did not have a major impact on how engaged they are in the community. However, there were some relatively minor demographic differences among those who are the most engaged in the community, compared to those who are the least engaged. Those respondents who are the most engaged in the community are more likely to be over 65 years old, female, have a graduate or professional degree, and be a business owner. Those who are the least engaged in the community are more likely to be age 55-64, male, with their highest level of education being a high school diploma.

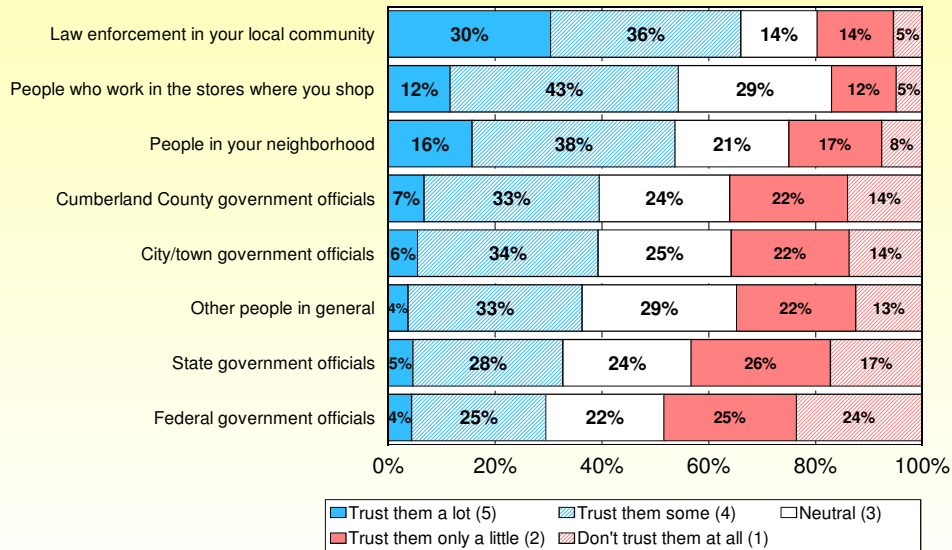
ETC Institute also analyzed obstacles and barriers that make it difficult for people to be involved in the community. By far the top two obstacles and barriers that were identified are an inflexible or demanding work schedule and a lack of information. Our cross-tabular analysis showed that these are clearly the top two barriers not just overall, but also for all key demographic groups, regardless of the age, gender, income level, and race/ethnicity of respondents.

Section 1:

Charts and Graphs

Q1. Perceptions of Trust Among the Following Groups of People

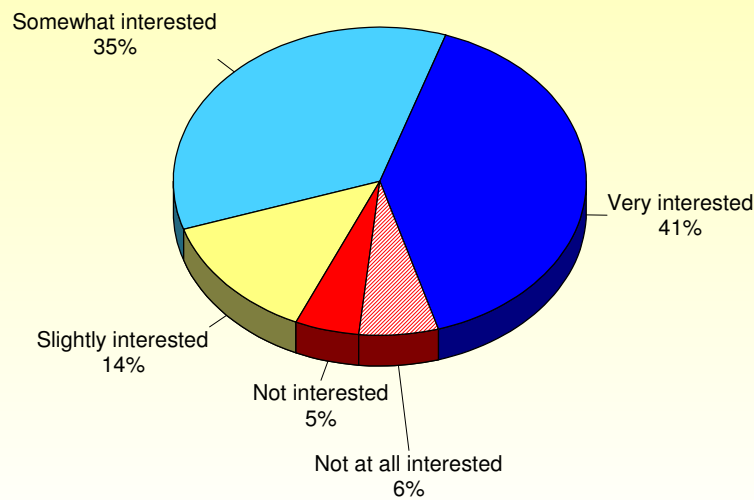
by percentage of respondents (excluding "don't know")



Source: ETC Institute (2017 - Greater Fayetteville United)

Q2. How interested are you in politics and national affairs?

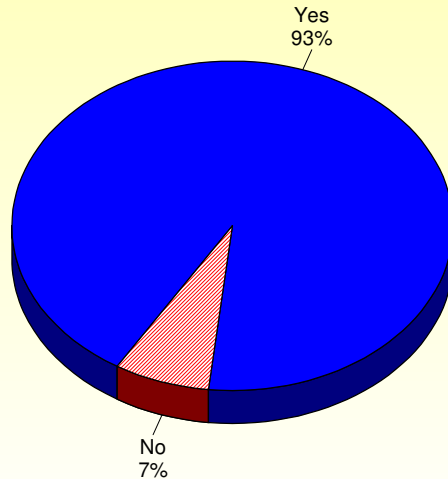
by percentage of respondents (excluding "don't know")



Source: ETC Institute (2017 - Greater Fayetteville United)

Q3. Are you currently registered to vote?

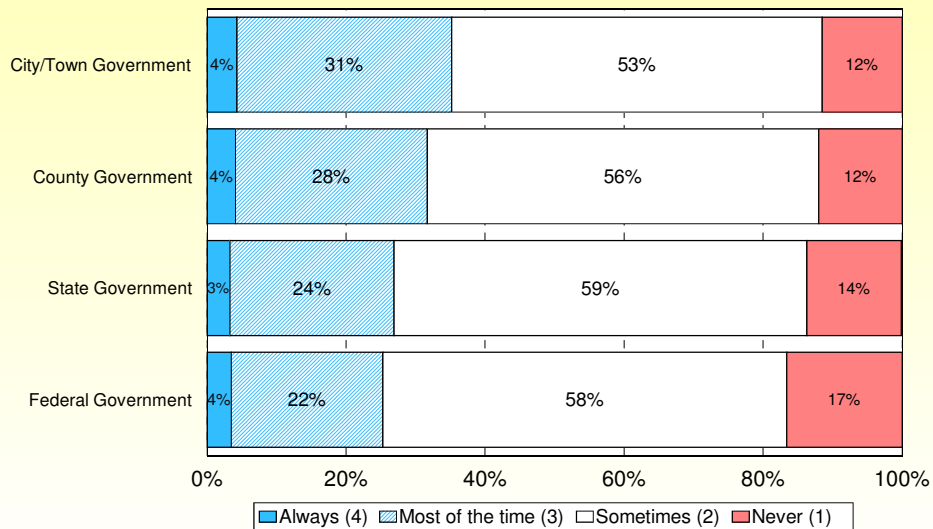
by percentage of respondents (excluding "not provided")



Source: ETC Institute (2017 - Greater Fayetteville United)

Q4. How Much of the Time Respondents Think They Can Trust the Following

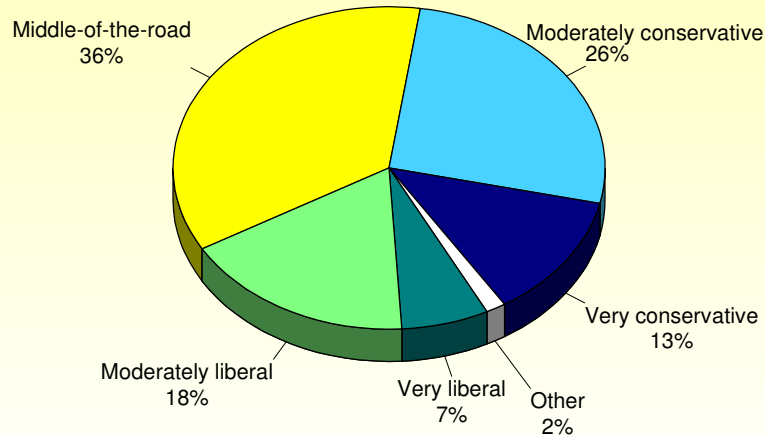
by percentage of respondents (excluding "don't know")



Source: ETC Institute (2017 - Greater Fayetteville United)

Q5. How would you describe your personal political outlook?

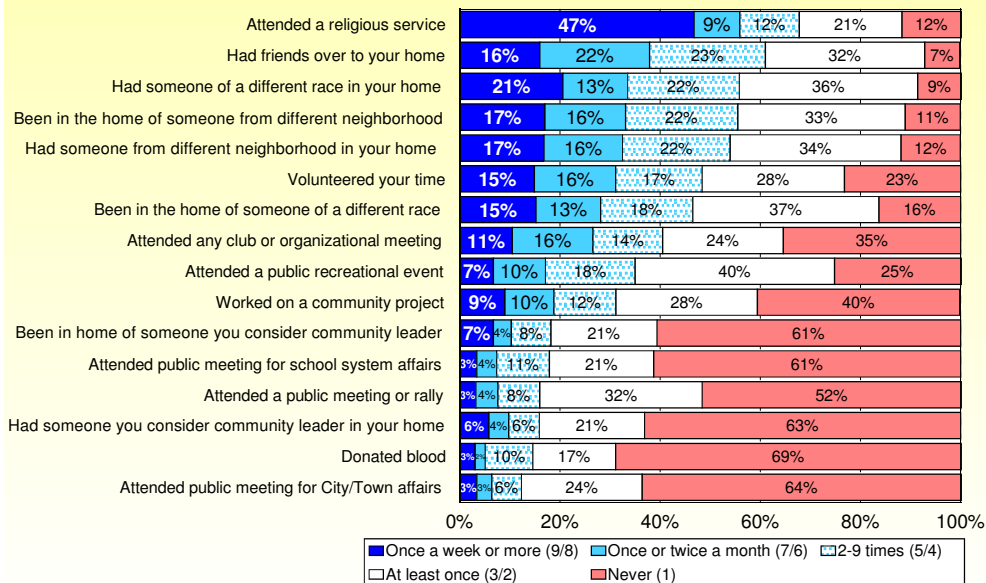
by percentage of respondents (excluding "don't know")



Source: ETC Institute (2017 - Greater Fayetteville United)

Q6. How Many Times in the Past 12 Months Respondents Have Done the Following

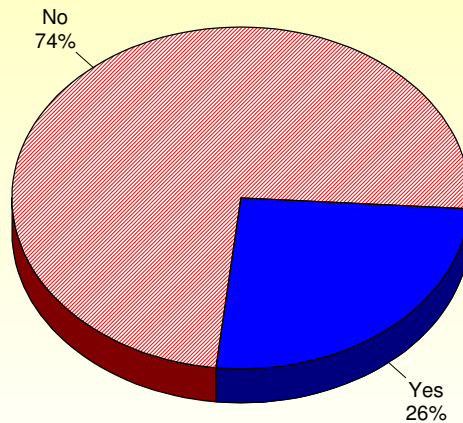
by percentage of respondents (excluding "don't know")



Source: ETC Institute (2017 - Greater Fayetteville United)

Q7. Have you served as an officer or served on a committee of any local club or other organization in the past 12 months?

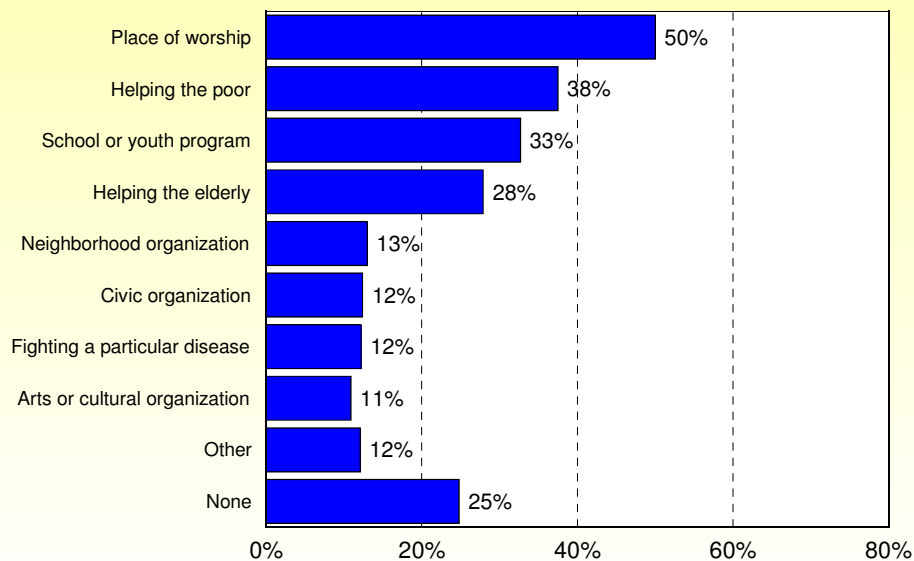
by percentage of respondents (excluding "don't know")



Source: ETC Institute (2017 - Greater Fayetteville United)

Q8. Organizations or Causes That Respondents Have Volunteered to Do Work with in the Past 12 Months

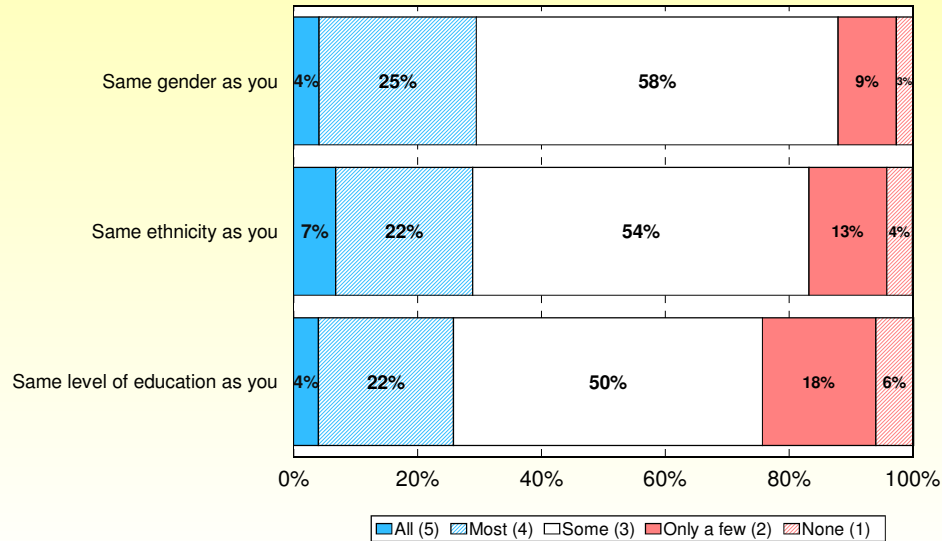
by percentage of respondents (multiple selections could be made)



Source: ETC Institute (2017 - Greater Fayetteville United)

Q8a. How many people from the groups you volunteered with are in each of the following categories?

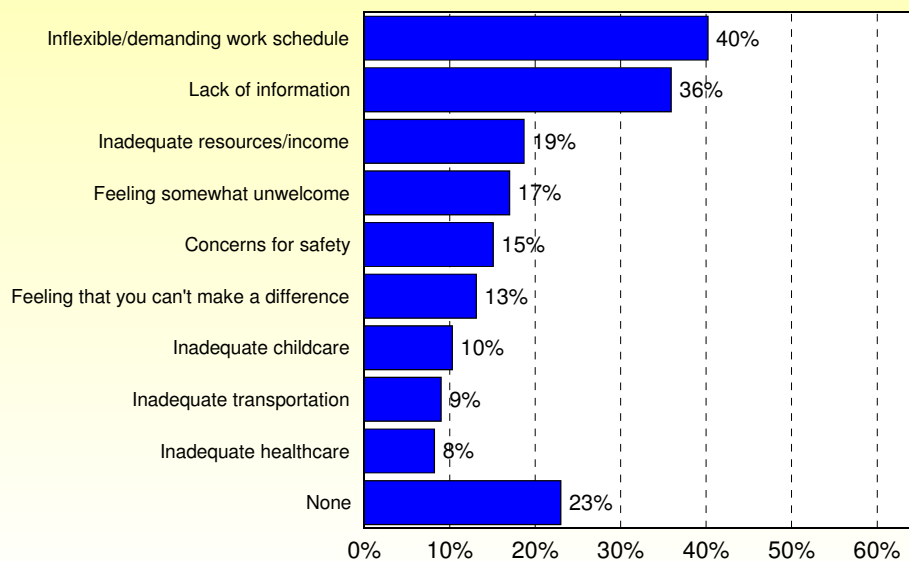
by percentage of respondents (excluding "don't know")



Source: ETC Institute (2017 - Greater Fayetteville United)

Q9. Obstacles or Barriers Making It Difficult for Respondents to be Involved With Their Community

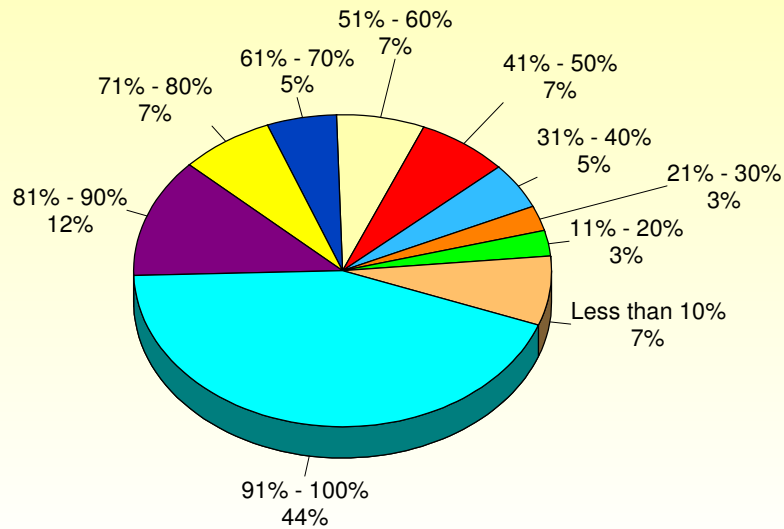
by percentage of respondents (multiple selections could be made)



Source: ETC Institute (2017 - Greater Fayetteville United)

Q10. Thinking back to the neighborhood you lived in when you were growing up, about what percent of the neighbors were of the same race/ethnicity as you?

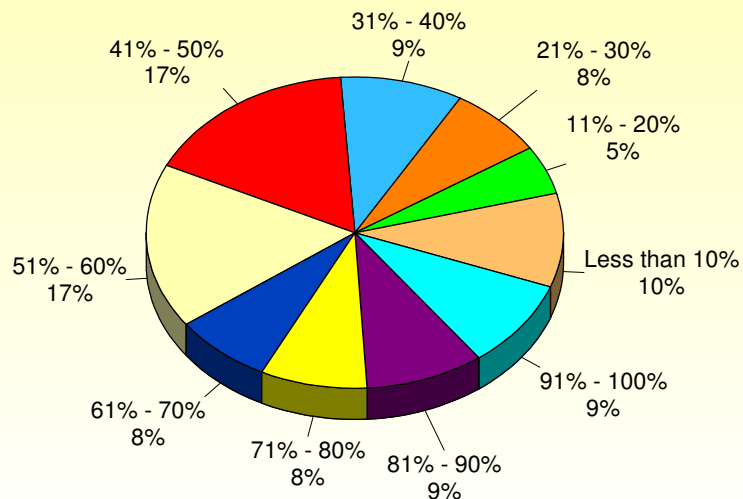
by percentage of respondents (excluding "don't know")



Source: ETC Institute (2017 - Greater Fayetteville United)

Q11. Thinking about your neighborhood now, about what percent of your neighbors are of the same race/ethnicity as you?

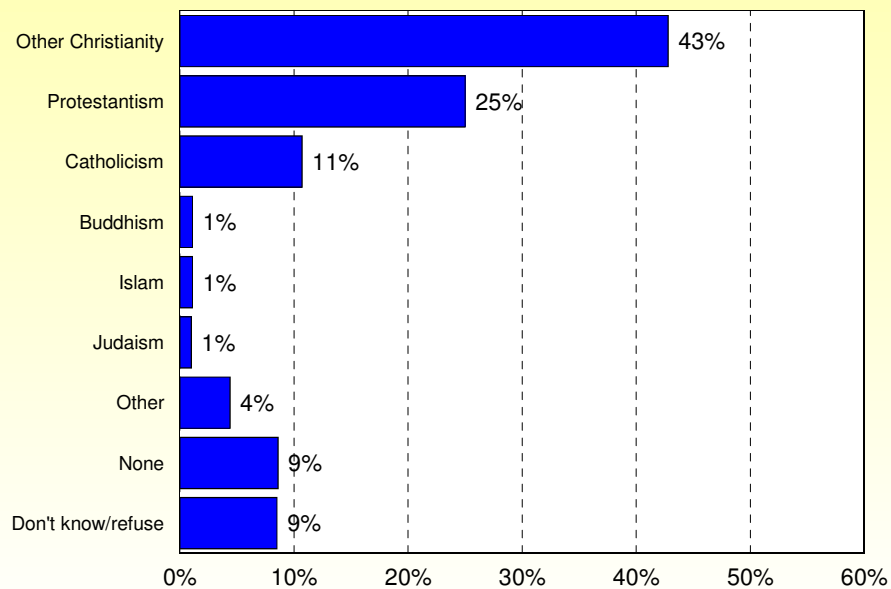
by percentage of respondents (excluding "don't know")



Source: ETC Institute (2017 - Greater Fayetteville United)

Q12. What is your religious preference?

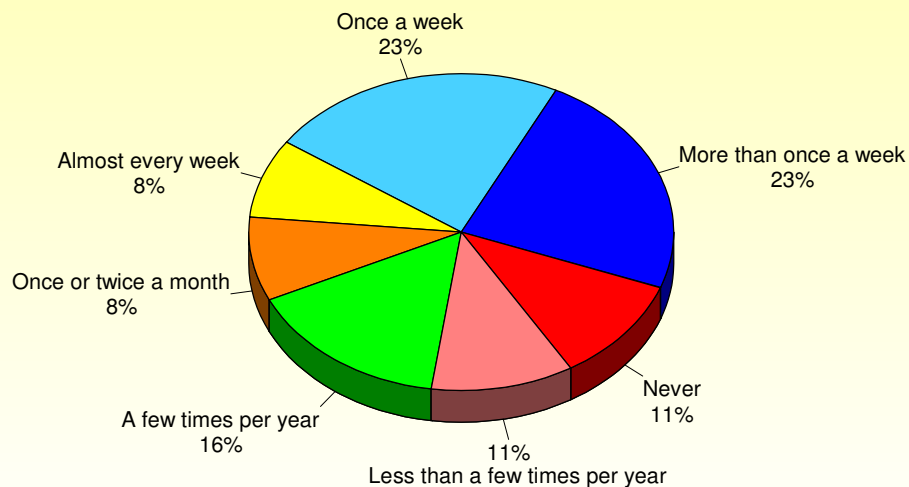
by percentage respondents (excluding "don't know/refused")



Source: ETC Institute (2017 - Greater Fayetteville United)

Q13. Not including weddings and funerals, how often do you attend religious services?

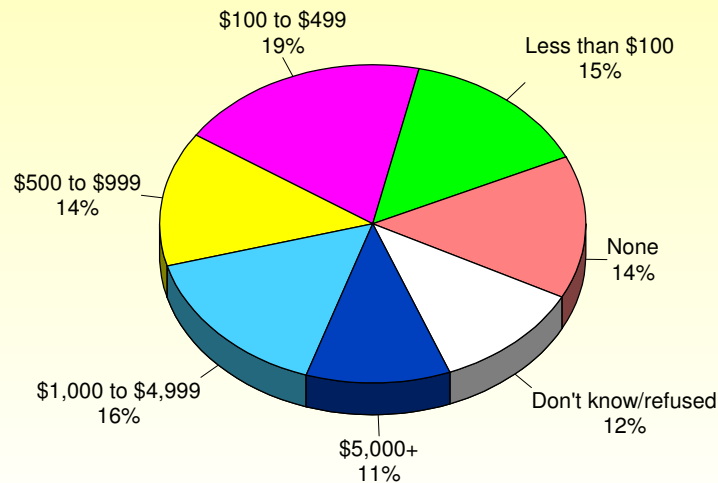
by percentage of respondents (excluding "don't know/refused")



Source: ETC Institute (2017 - Greater Fayetteville United)

Q14. During the past 12 months, approximately how much money did you and other members of your household contribute to all secular causes and all religious causes?

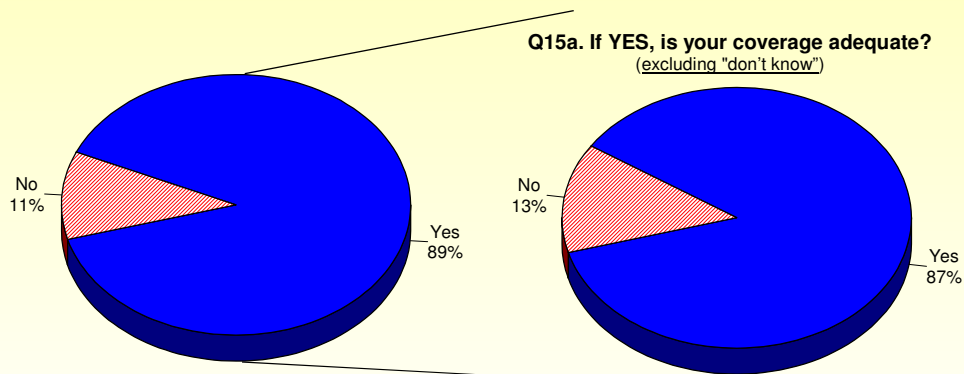
by percentage of respondents (excluding "don't know/refused")



Source: ETC Institute (2017 - Greater Fayetteville United)

Q15. Are you covered by any type of health insurance such as coverage through an employer, Medicaid, Medicare, Affordable Care Act (ACA)/Obamacare, or private health insurance?

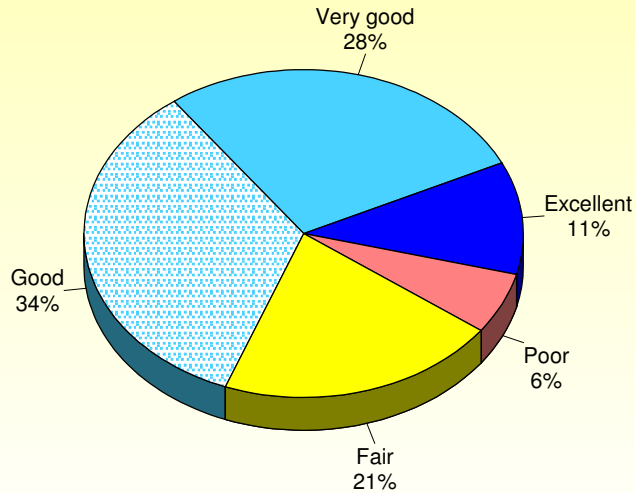
by percentage of respondents (excluding "don't know")



Source: ETC Institute (2017 - Greater Fayetteville United)

Q16. How would you describe your overall state of health these days?

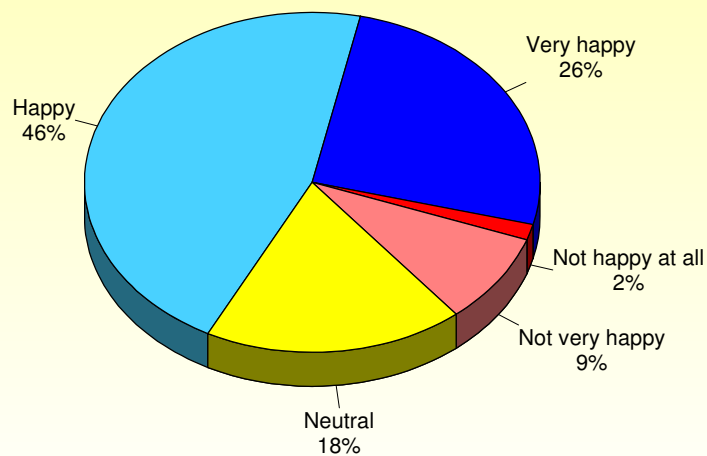
by percentage of respondents (excluding "don't know/refused")



Source: ETC Institute (2017 - Greater Fayetteville United)

Q17. All things considered, how happy would you say you are?

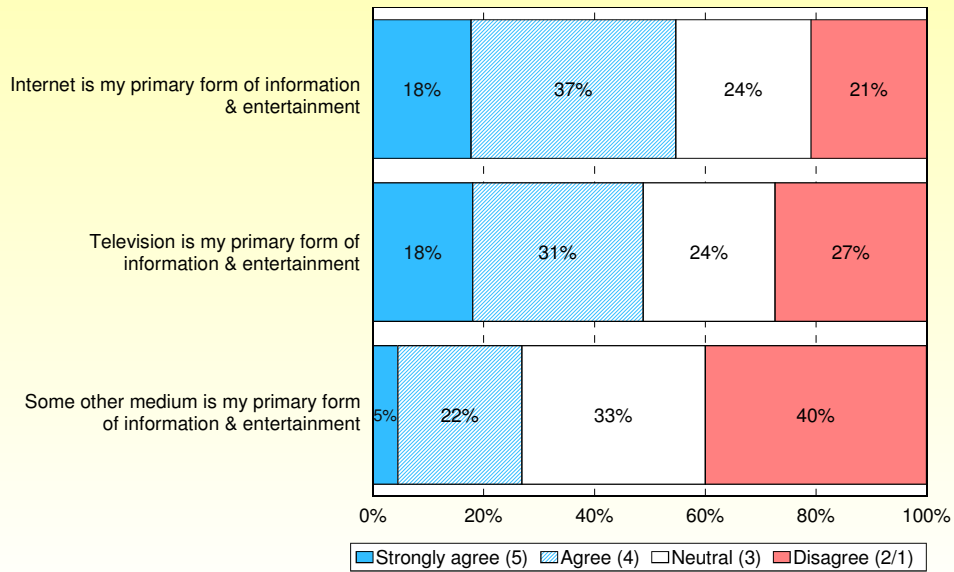
by percentage of respondents (excluding "don't know/refused")



Source: ETC Institute (2017 - Greater Fayetteville United)

Q18. Level of Agreement with Various Statements

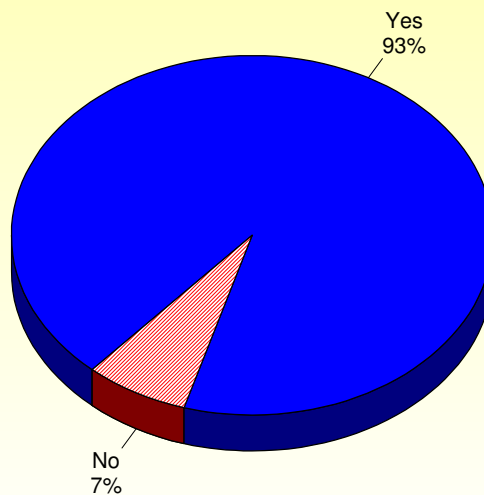
by percentage of respondents (excluding "don't know")



Source: ETC Institute (2017 - Greater Fayetteville United)

Q19. Do you have access to the internet?

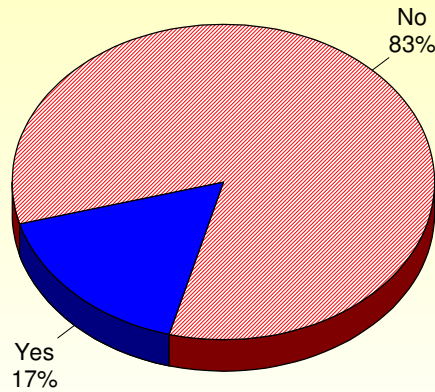
by percentage of respondents (excluding "don't know")



Source: ETC Institute (2017 - Greater Fayetteville United)

Q20. Are you involved in any group that primarily meets over the internet?

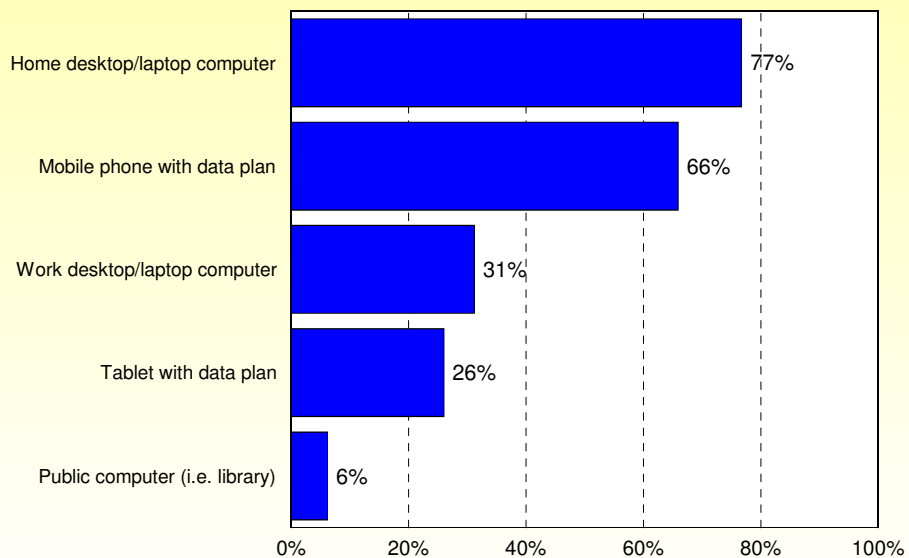
by percentage of respondents who have access to the internet (excluding "don't know")



Source: ETC Institute (2017 - Greater Fayetteville United)

Q21. How do you typically access the internet?

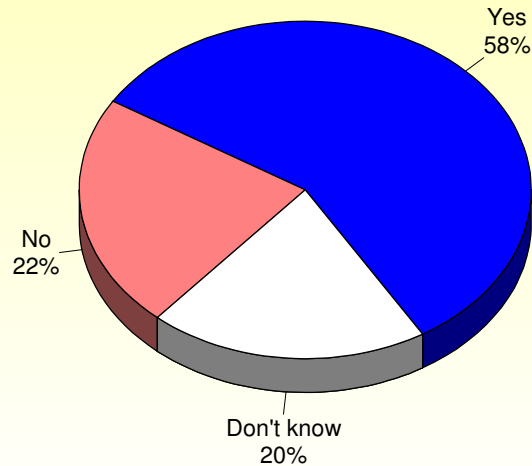
by percentage of respondents who access the internet (multiple selections could be made)



Source: ETC Institute (2017 - Greater Fayetteville United)

Q22. Do any of the clubs or organizations you belong to have information available on the web (i.e. a bulletin board, discussion board, or other online forum)?

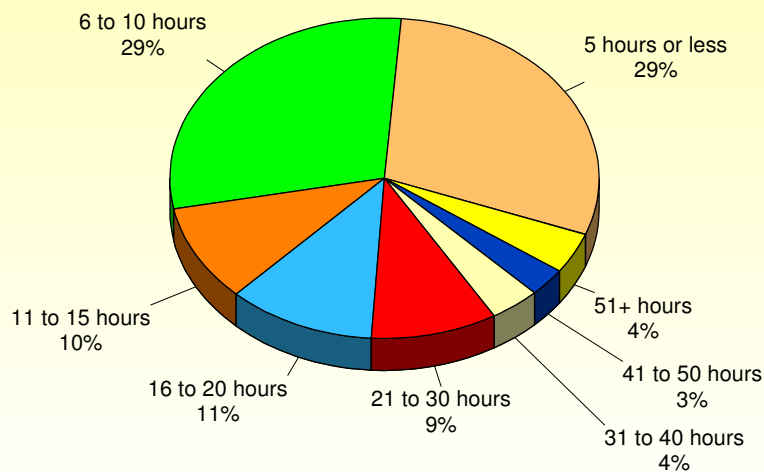
by percentage of respondents who have access to the internet



Source: ETC Institute (2017 - Greater Fayetteville United)

Q23. On average, how many hours per week do you spend online, excluding any work-related activities?

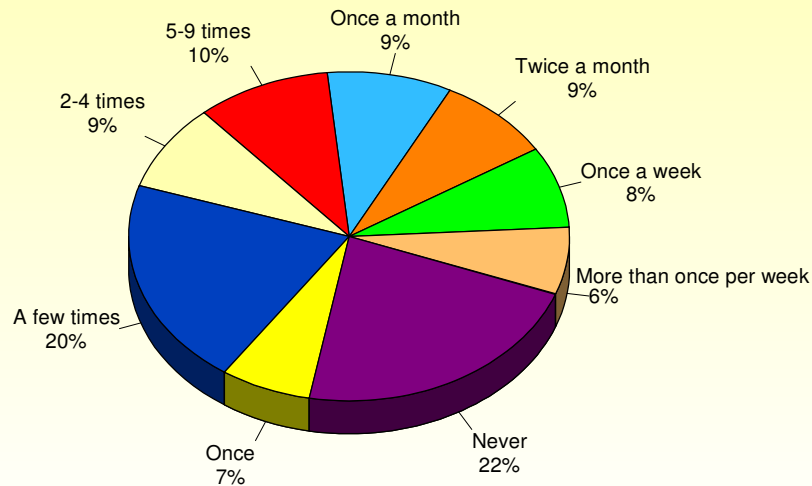
by percentage of respondents who have access to the internet (excluding "don't know")



Source: ETC Institute (2017 - Greater Fayetteville United)

Q24. How many times in the past 12 months have you accessed City or County information online?

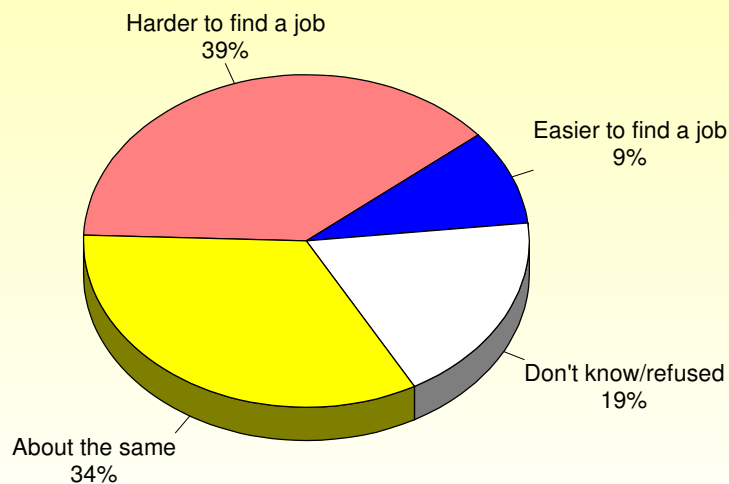
by percentage of respondents who have access to the internet (excluding "don't know")



Source: ETC Institute (2017 - Greater Fayetteville United)

Q25. Thinking about someone like you six months from now, will it be easier or harder to find a job in Cumberland County?

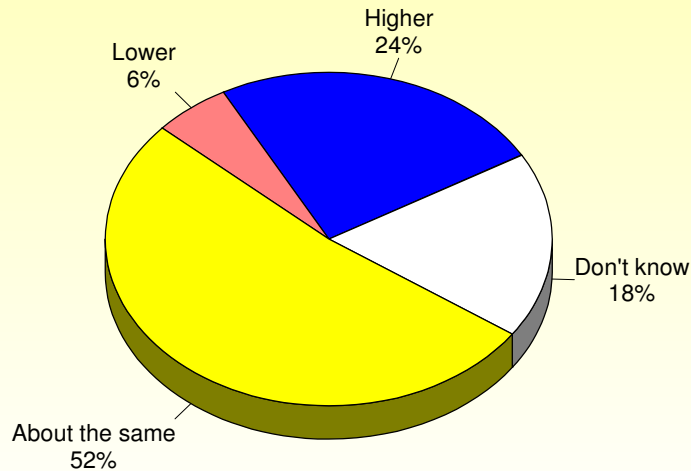
by percentage of respondents



Source: ETC Institute (2017 - Greater Fayetteville United)

Q26. What do you think your income will be six months from now?

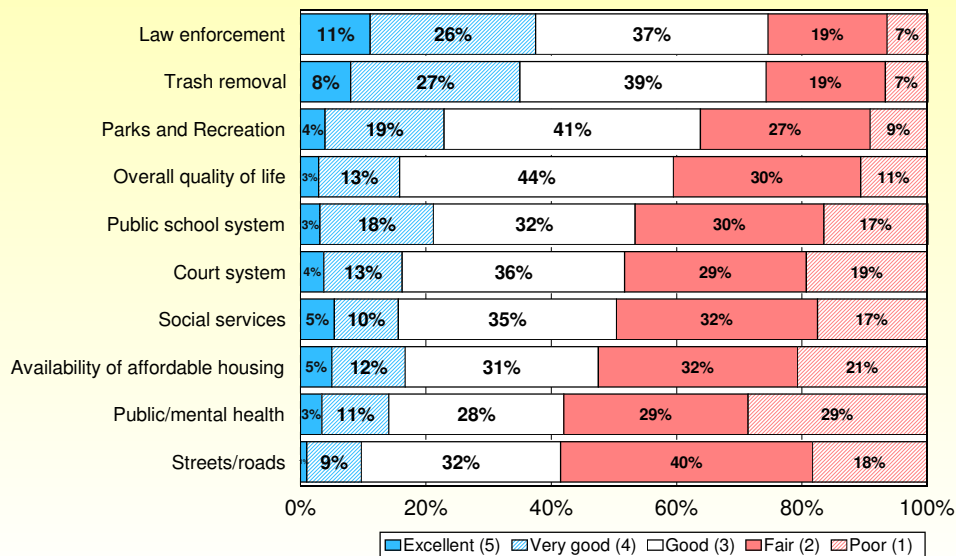
by percentage of respondents



Source: ETC Institute (2017 - Greater Fayetteville United)

Q27. Perceptions of Cumberland County and Its Municipalities

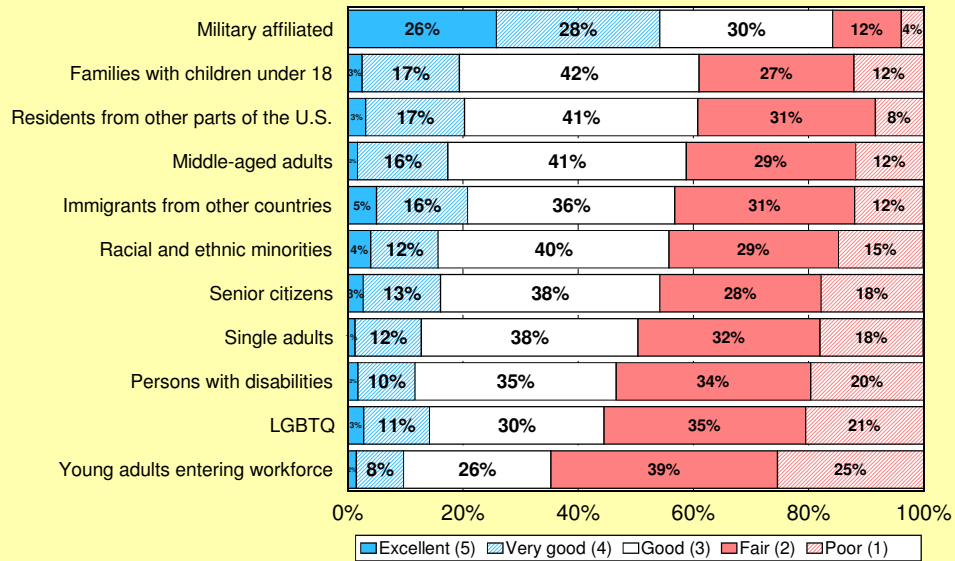
by percentage of respondents (excluding "don't know")



Source: ETC Institute (2017 - Greater Fayetteville United)

Q28. Perceptions of Cumberland County & Its Municipalities as a Place to Live for Various Groups of People

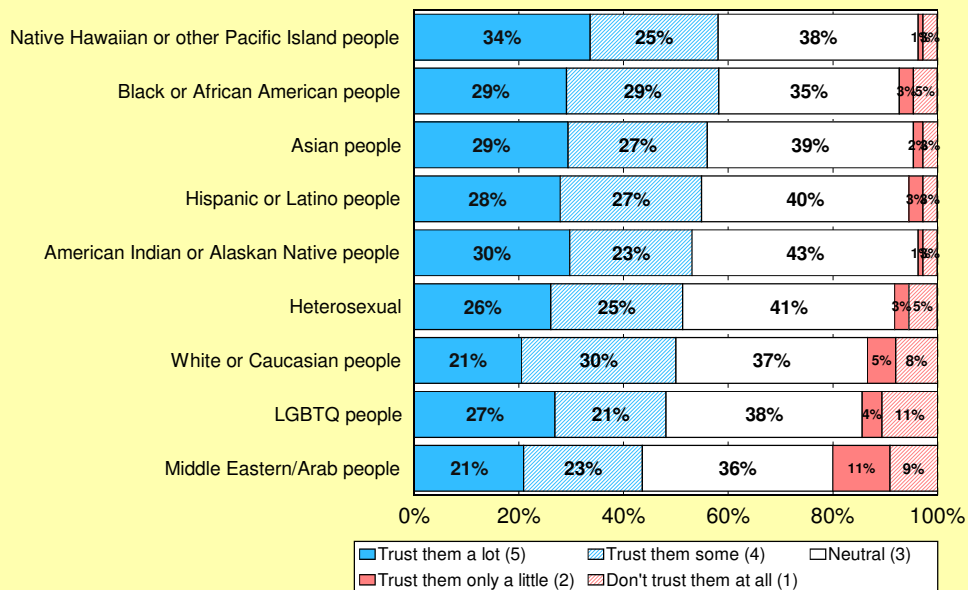
by percentage of respondents (excluding "don't know")



Source: ETC Institute (2017 - Greater Fayetteville United)

Q29. Perceptions of Trust Toward Various Groups

by percentage of respondents (excluding "don't know")

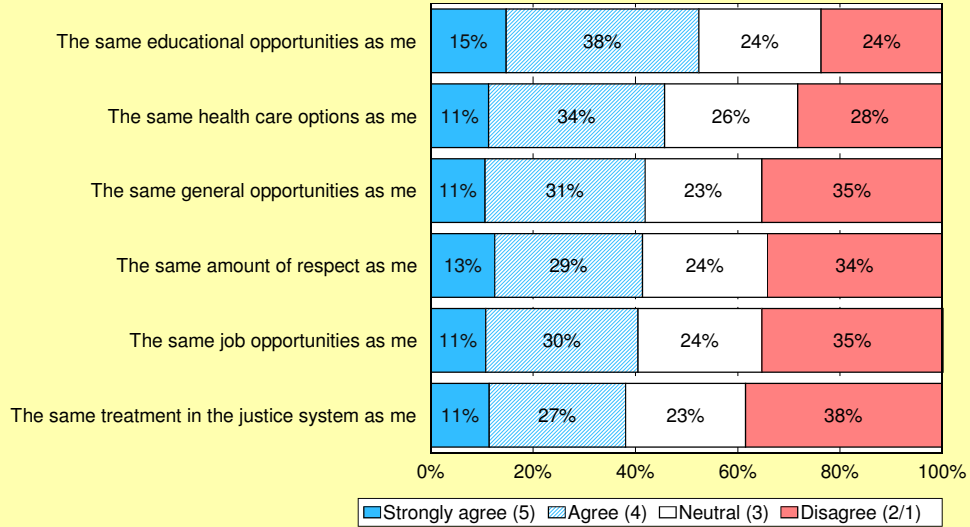


Source: ETC Institute (2017 - Greater Fayetteville United)

Q30. Level of Agreement with Various Statements

by percentage of respondents (excluding "don't know")

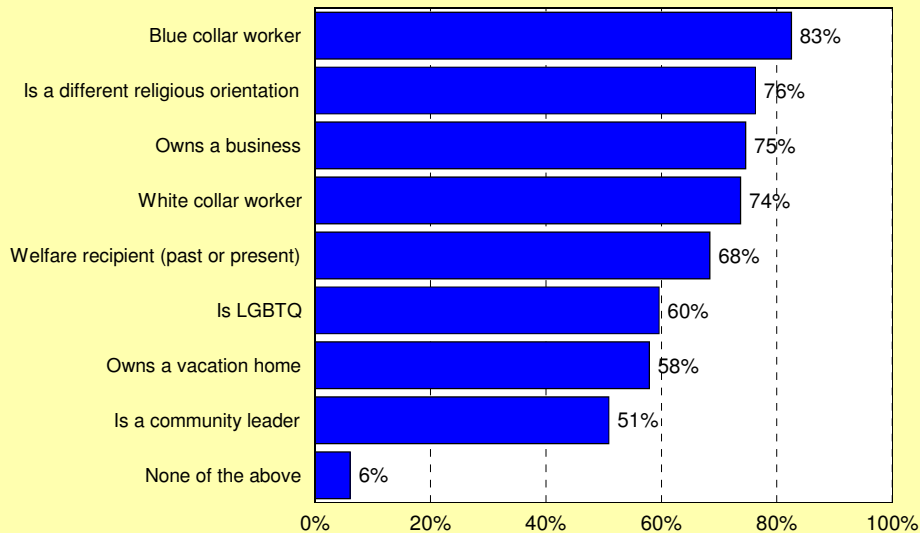
In general, members of different race, cultures, and ethnicities in Cumberland County receive:



Source: ETC Institute (2017 - Greater Fayetteville United)

Q31. Please indicate if you have a personal friend who is in any of the following categories

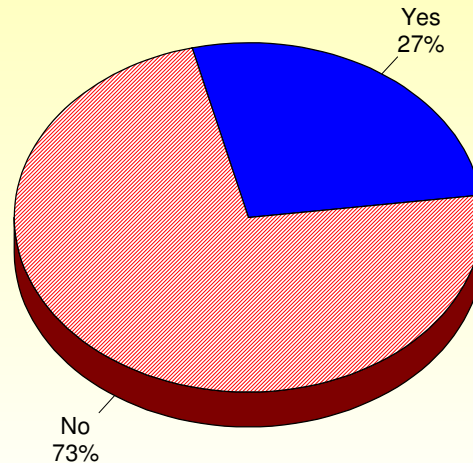
by percentage of respondents (multiple selections could be made)



Source: ETC Institute (2017 - Greater Fayetteville United)

Q32. Do you have children in the Cumberland County School System?

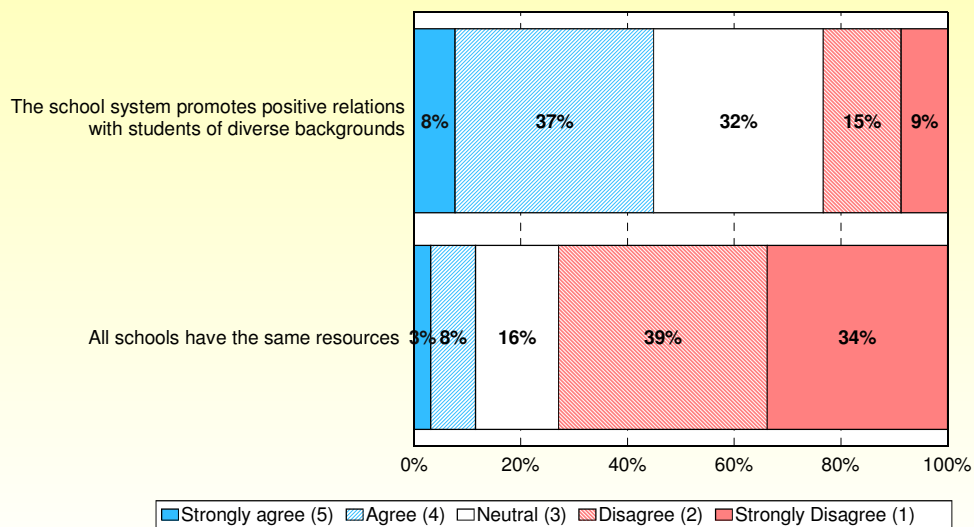
by percentage of respondents (excluding "don't know")



Source: ETC Institute (2017 - Greater Fayetteville United)

Q33. Level of Agreement with Various Statements Regarding the Cumberland County School System

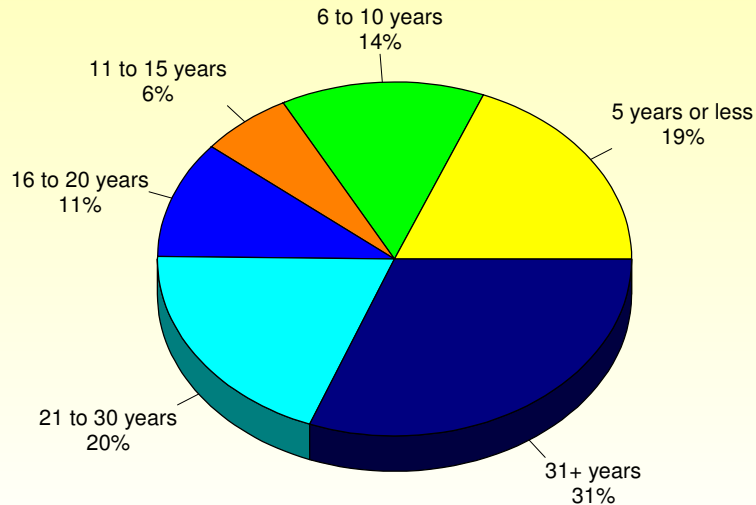
by percentage of respondents (excluding "don't know")



Source: ETC Institute (2017 - Greater Fayetteville United)

Q34. How many years have you lived in Cumberland County?

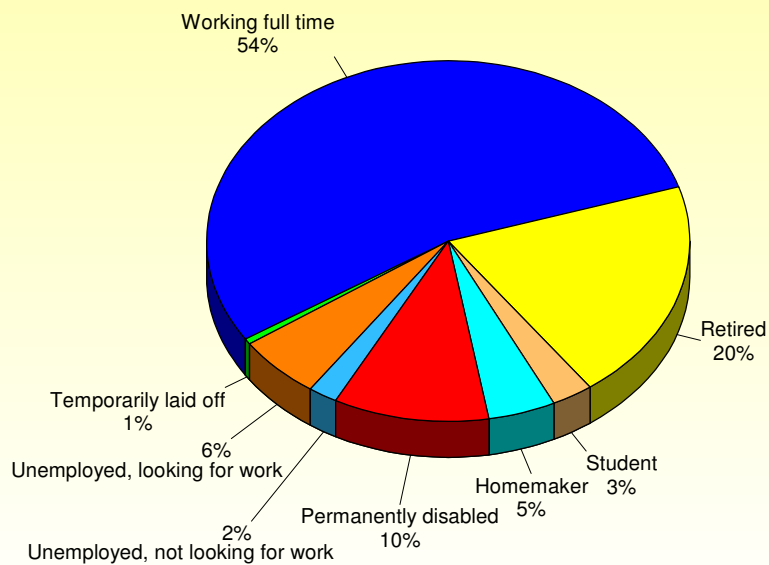
by percentage of respondents



Source: ETC Institute (2017 - Greater Fayetteville United)

Q35. What is your working status?

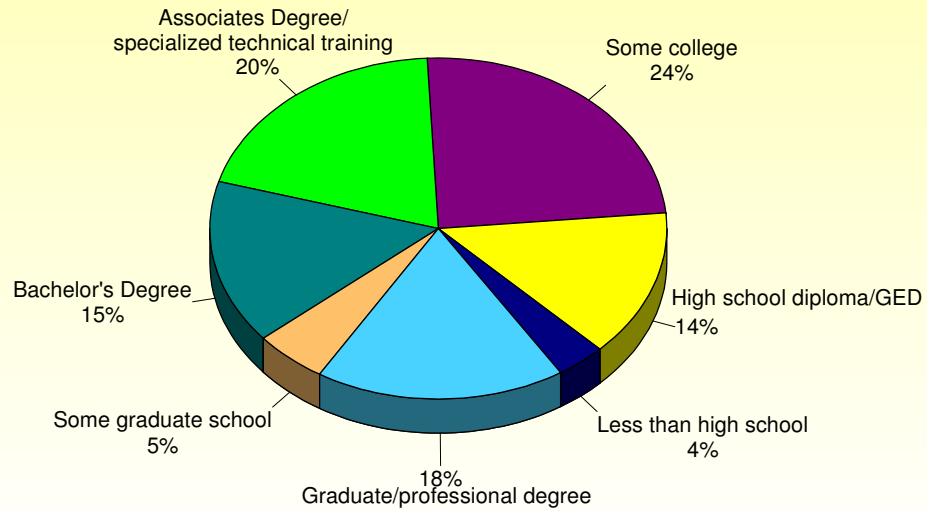
by percentage of respondents (excluding "don't know/refused")



Source: ETC Institute (2017 - Greater Fayetteville United)

Q36. What is the highest level of education you have completed?

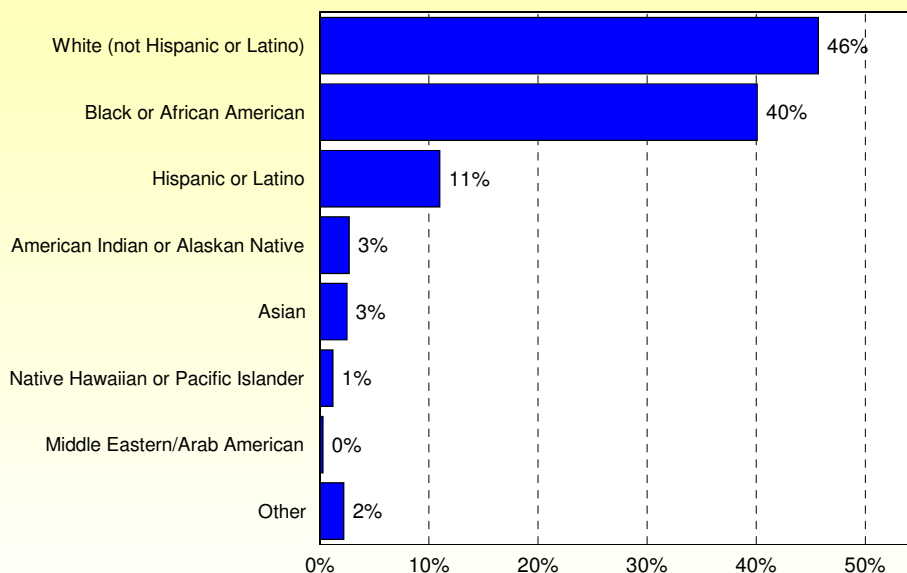
by percentage of respondents (excluding "don't know/refused")



Source: ETC Institute (2017 - Greater Fayetteville United)

Q37. What is your race/ethnicity?

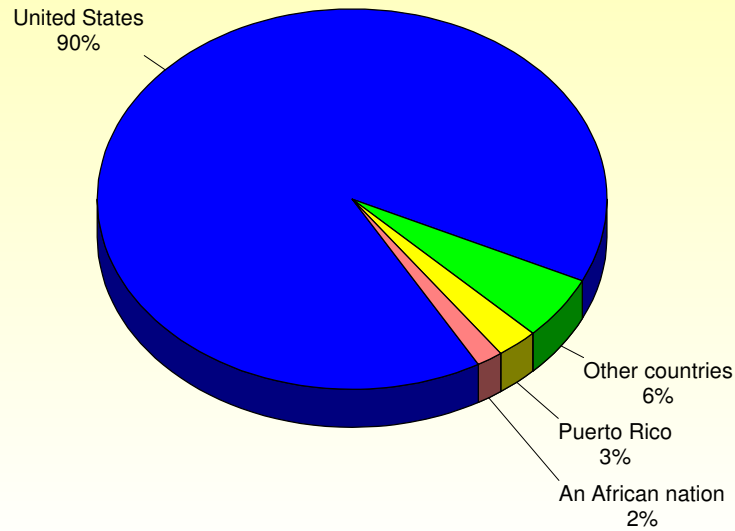
by percentage of respondents (multiple selections could be made)



Source: ETC Institute (2017 - Greater Fayetteville United)

Q38. What is your national origin?

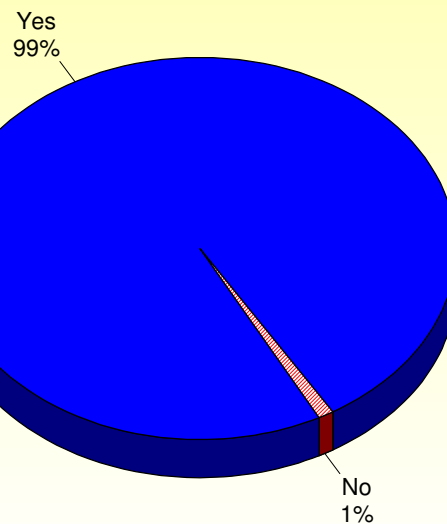
by percentage of respondents (excluding "not provided")



Source: ETC Institute (2017 - Greater Fayetteville United)

Q39. Are you a citizen of the United States?

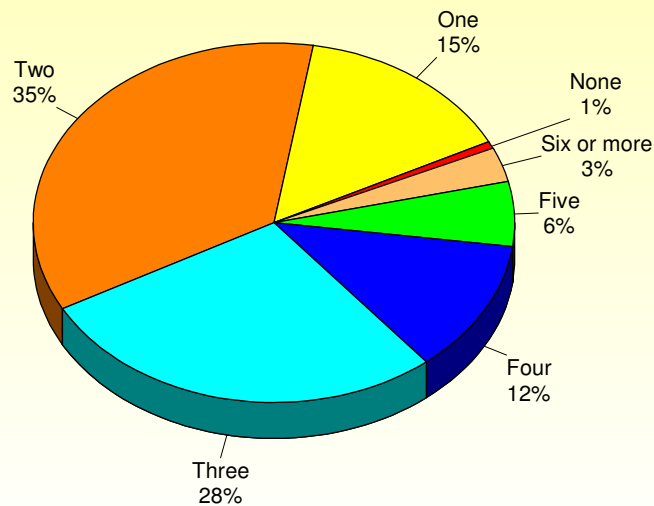
by percentage of respondents (excluding "don't know")



Source: ETC Institute (2017 - Greater Fayetteville United)

Q40. How many different telephone numbers (including cell phones) does your household have, not counting those dedicated to a fax machine or computer?

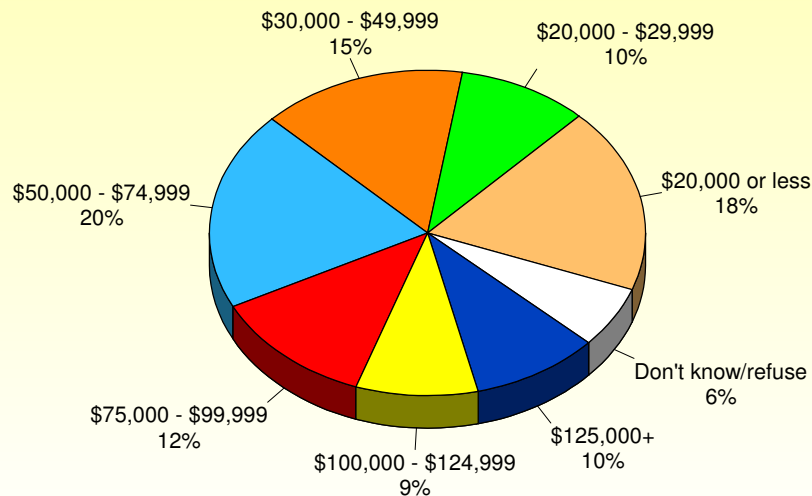
by percentage of respondents



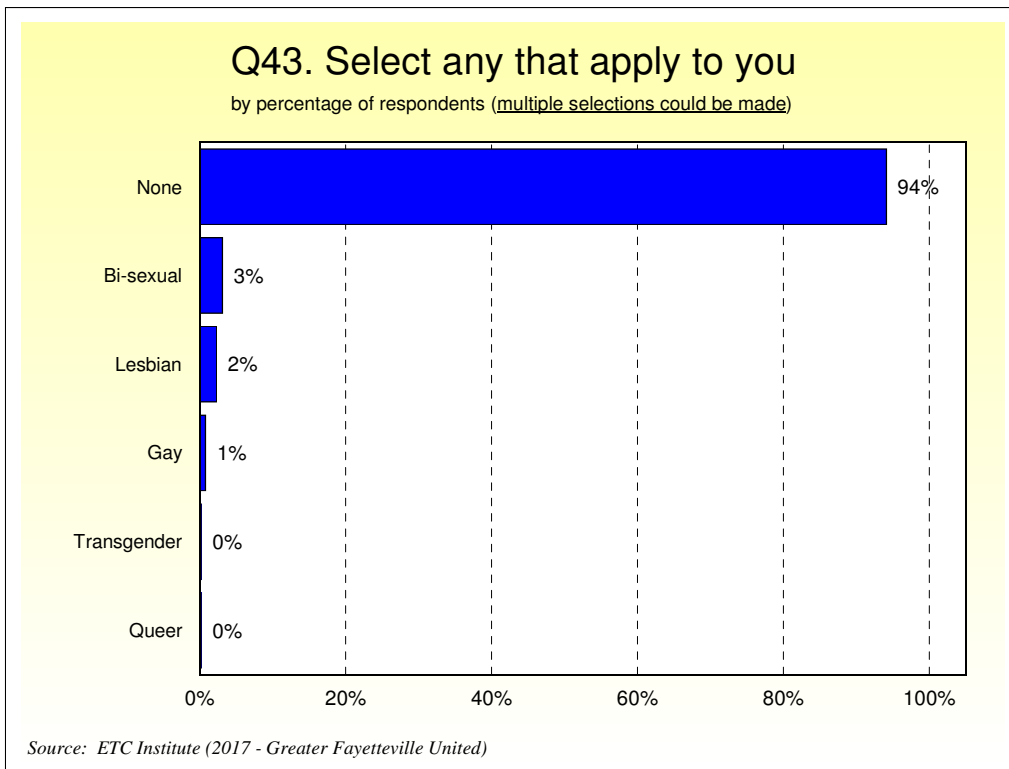
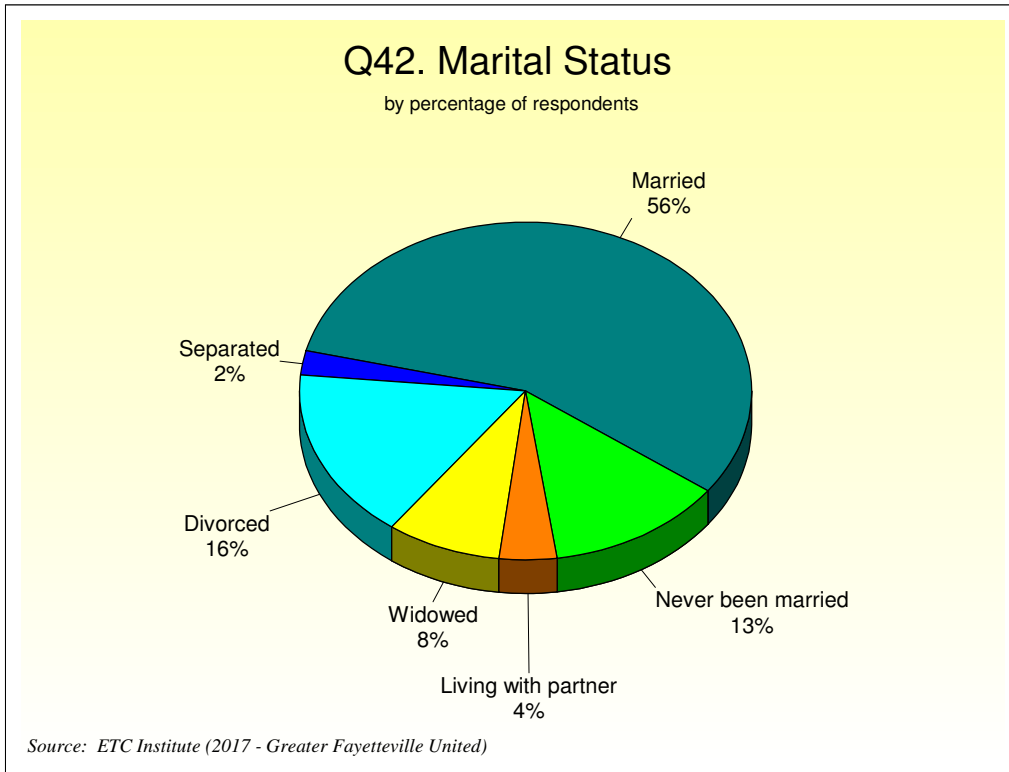
Source: ETC Institute (2017 - Greater Fayetteville United)

Q41. What is your total annual household income from 2016?

by percentage of respondents

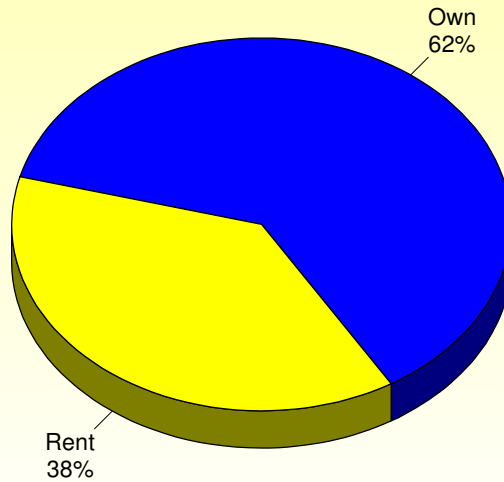


Source: ETC Institute (2017 - Greater Fayetteville United)



Q44. Do you own or rent your current residence?

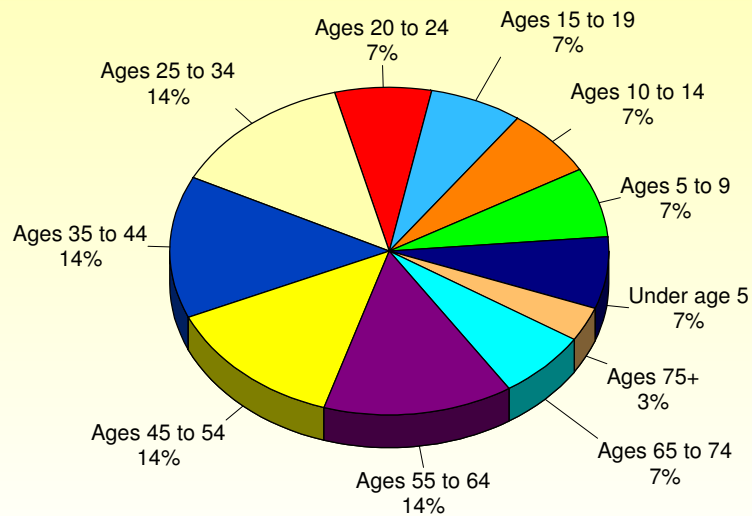
by percentage of respondents (excluding "don't know")



Source: ETC Institute (2017 - Greater Fayetteville United)

Q45. Ages of Household Members

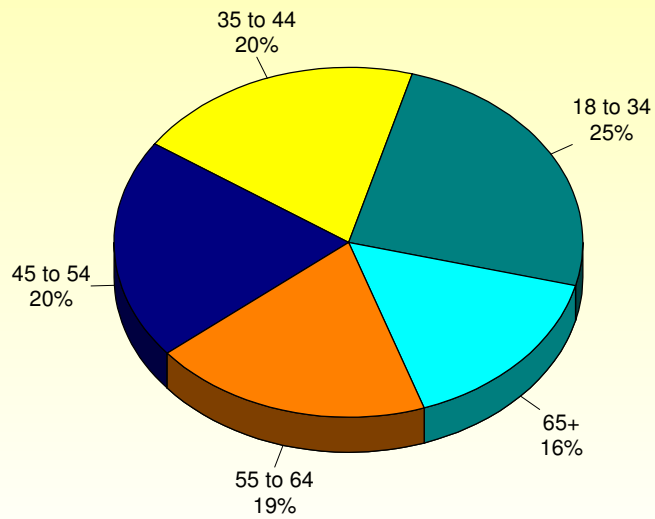
by percentage of persons in household



Source: ETC Institute (2017 - Greater Fayetteville United)

Q46. What is your age?

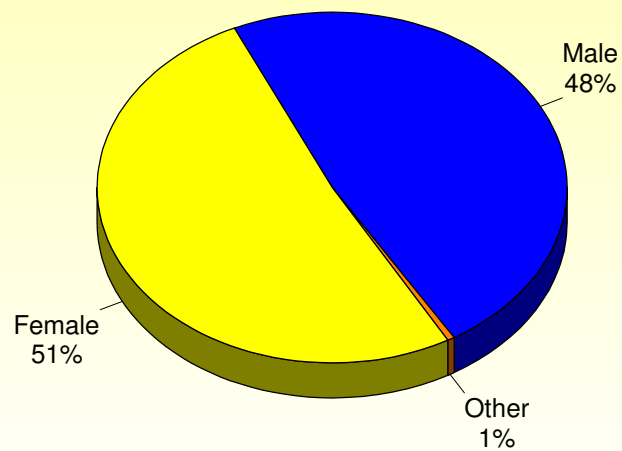
by percentage of respondents (excluding "not provided")



Source: ETC Institute (2017 - Greater Fayetteville United)

Q47. Gender

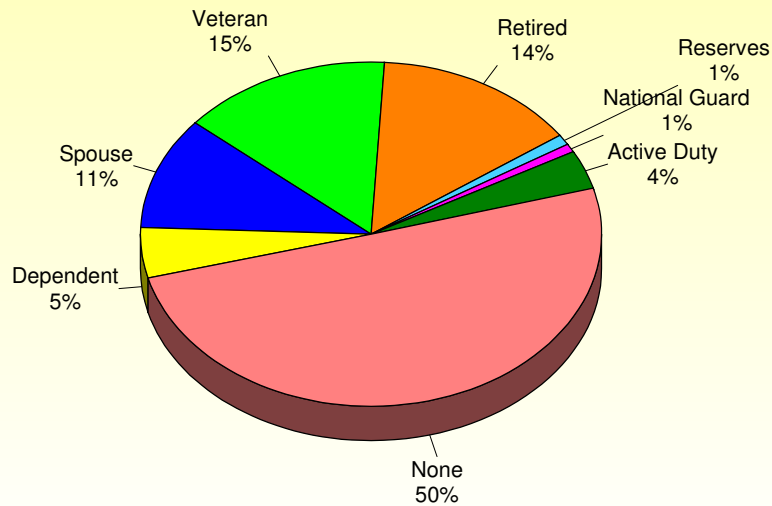
by percentage of respondents



Source: ETC Institute (2017 - Greater Fayetteville United)

Q48. What best describes your military affiliation?

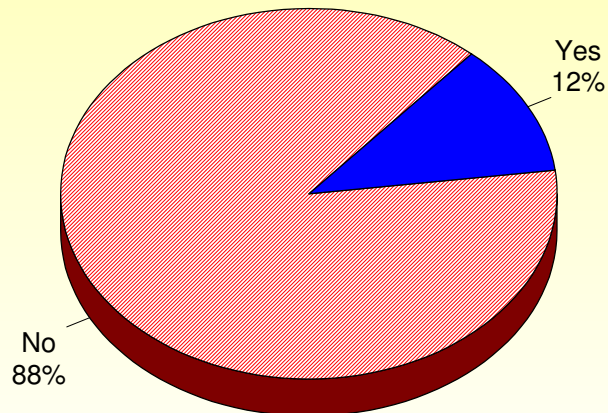
by percentage of respondents



Source: ETC Institute (2017 - Greater Fayetteville United)

Q49. Are you a business owner?

by percentage of respondents



Source: ETC Institute (2017 - Greater Fayetteville United)

Section 2: **Gap Analysis**

Greater Fayetteville United Social Capital Community Survey Gap Analysis

Overview

Gap analysis is a tool that identifies potential ways of increasing positive perceptions and attitudes among residents by identifying factors that contribute to differences in perceptions and attitudes. Gap analysis compares the mean agreement ratings from various groups of residents to gain better insight on how the group reacted to each set of questions. ETC Institute performed this gap analysis on 10 different groups of residents. These 10 groups were determined based on their responses to specific questions on the survey. ETC Institute made the following comparisons based on a thorough review of the survey instrument and responses.

Question 2: How interested are you in politics and national affairs?

- Compares responses from respondents who indicated they are “very interested” in politics and national affairs and respondents who indicated they are “not interested” or “not at all interested.”

Question 6.1: About how many times in the past 12 months have you worked on a community project?

- Compares responses from respondents who indicated they have worked on a community project “more than once/week” or “once a week” and respondents who indicated they have attended a religious service “once” or “never.”

Question 6.8: About how many times in the past 12 months have you volunteered your time?

- Compares responses from respondents who indicated they have volunteered their time “more than once/week” or “once a week” and respondents who indicated they have attended a religious service “once” or “never.”

Question 6.16: About how many times in the past 12 months have you attended a religious service?

- Compares responses from respondents who indicated they have attended a religious service “more than once/week” or “once a week” and respondents who indicated they have attended a religious service “once” or “never.”

Question 7: In the past 12 months, have you served as an officer or served on a committee of any local club or other organization?

- Compares responses from respondents who indicated they have served as an officer or served on a committee of any local club or other organizations and respondents who have not.

Question 16: How would you describe your overall state of health these days?

- Compares responses from respondents who indicated their overall state of health is “excellent” and respondents who indicated their overall state of health is “fair” or “poor.”

Question 17: All things considered, how happy would you say you are?

- Compares responses from respondents who indicated they are “very happy” and respondents who indicated they are “not very happy” or “not happy at all.”

Question 25: Thinking about someone like you six months from now, will it be easier or harder to find a job in Cumberland County?

- Compares responses from respondents who indicated they believe it will be “easier to find a job” or “about the same” and respondents who indicated they believe it will be “harder to find a job.”

Question 37: What is your race/ethnicity?

- Compares responses from respondents who indicated they are White (not Hispanic or Latino) and respondents who indicated they are Black or African American.

Question 48: What best describes your military affiliation?

- Compares responses from respondents who have any type of military affiliation and respondents who have no military affiliation.

Responses for the following questions were analyzed using gap analysis: Question 1 (5-point scale), Question 6 (9-point scale), Question 18 (5-point scale), Question 27 (5-point scale), Question 28 (5-point scale), Question 29 (5-point scale), Question 30 (5-point scale), and Question 33 (5-point scale).

Ratings are shaded from blue to red to indicate the change from positive to negative responses. Ratings in the darkest blue are among the most positive and ratings in the darkest red are among the most negative. Those ratings that are shaded light blue, white, or light red are within the high and low ranges. Because Question 6 was based on a 9 point scale it was analyzed separately and will be compared as a stand-alone question.

By taking action to address items with the greatest gaps, community leaders can minimize disparities in the community which should positively influence residents over time.

Significant Gaps

The following is a summary of the largest gaps among the 10 groups that were compared using the gap analysis. Gaps in responses for Question 6 were analyzed separately due to the 9-point scale responses were based on.

- **Question 2: How interested are you in politics and national affairs?**
 - Q1-3. Perceptions of trust with law enforcement in your local community (Gap = 0.51)
 - Q6-8. Volunteered your time (Gap = 1.84)
- **Question 6.1: About how many times in the past 12 months have you worked on a community project?**
 - Q1-1. Perceptions of trust with other people in general (Gap = 0.55)
 - Q6-8. Volunteered your time (Gap = 4.38)
- **Question 6.8: About how many times in the past 12 months have you volunteered your time?**
 - Q1-1. Perceptions of trust with other people in general (Gap = .059)
 - Q6-1. Worked on a community project (Gap = 4.35)
- **Question 6.16: About how many times in the past 12 months have you attended a religious service?**
 - Q27-1. Perceptions of the availability of affordable housing in Cumberland County and its municipalities (Gap = 0.34)
 - Q6-8. Volunteered your time (Gap = 2.40)
- **Question 7: In the past 12 months, have you served as an officer or served on a committee of any local club or other organization?**
 - Q1-2. Perceptions of trust with people in your neighborhood (Gap = 0.50)
 - Q6-7. Attended any club or organizational meeting (Gap = 2.80)
- **Question 16: How would you describe your overall state of health these days?**
 - Q18-1. Agreement with the statement that television is my primary form of information and entertainment (Gap = 0.80)
 - Q6-7. Attended a club or organizational meeting (Gap = 1.56)
- **Question 17: All things considered, how happy would you say you are?**
 - Q27-1. Perceptions of the availability of affordable housing in Cumberland County and its municipalities (Gap = 0.84)
 - Q6-16. Attended a religious service (Gap = 1.87)
- **Question 25: Thinking about someone like you six months from now, will it be easier or harder to find a job in Cumberland County?**

- Q33-1. Agreement with the statement that the school system promotes positive relations with students of diverse backgrounds (Gap = 0.49)
 - Q6-8. Volunteered your time (Gap = 0.48)
- **Question 37: What is your race/ethnicity?**
 - Q1-3. Perceptions of trust with law enforcement in your local community (Gap = 0.75)
 - Q6-16. Attended a religious service (Gap = 0.96)
- **Question 48: What best describes your military affiliation?**
 - Q28-11. Rating Cumberland County and its municipalities as a place to live for military affiliated groups (Gap = 0.29)
 - Been in the home of someone of a different race (Gap = 0.46)

Greater Fayetteville United Social Capital Community Survey: Findings Report

GAP Analysis: Interest in politics and national affairs

Question	Mean Rating for Respondents Who Responded "Very Interested" to Q2. Rating = 5	Mean Rating for Respondents Who Responded "Not Interested" or "Not at all Interested" to Q2. Rating = 2/1	GAP
Perceptions of Trust:			
Q1-3. Law enforcement in your local community	3.75	3.24	0.51
Q1-2. People in your neighborhood	3.45	3.02	0.43
Q1-1. Other people in general	3.02	2.63	0.39
Q29-2. Asian people	3.58	3.30	0.28
Q1-4. People who work in stores where you shop	3.48	3.23	0.25
Q29-3. Black or African American people	3.55	3.33	0.22
Q29-4. Heterosexual people	3.60	3.40	0.20
Q29-8. Middle Eastern/Arab people	3.18	2.98	0.20
Q1-5. City/town government officials	2.86	2.71	0.15
Q29-5. Hispanic or Latino people	3.52	3.40	0.12
Q29-7. Native Hawaiian or other Pacific Island people	3.56	3.44	0.12
Q1-6. Cumberland County government officials	2.86	2.81	0.05
Q1-8. Federal government officials	2.48	2.44	0.04
Q1-7. State government officials	2.67	2.65	0.02
Q29-6. LGBTQ people	3.41	3.40	0.01
Q29-1. American Indian or Alaskan Native people	3.63	3.62	0.01
Rate Your Agreement With the Following:			
Q18-1. Television is my primary form of information & entertainment	3.18	3.60	0.42
Q18-2. Internet is my primary form of information & entertainment	3.39	3.67	0.28
Q33-2. All schools have the same resources	1.93	2.20	0.27
Q18-3. Some other medium is my primary form of information & entertainment	2.79	2.85	0.06
Q33-1. The school system promotes positive relations with students of diverse backgrounds	3.15	3.18	0.03
Perceptions of Cumberland County and its Municipalities:			
Q27-8. Public/mental health	2.15	2.58	0.43
Q27-1. Availability of affordable housing in Cumberland County & its municipalities	2.52	2.28	0.24
Q27-5. Law enforcement	3.11	2.93	0.18
Q27-6. Public school system	2.61	2.48	0.13
Q27-9. Court system	2.48	2.61	0.13
Q27-4. Trash removal	3.01	3.13	0.12
Q27-3. Parks & recreation	2.76	2.81	0.05
Q27-10. Overall quality of life in Cumberland County & its municipalities	2.62	2.66	0.04
Q27-7. Social services	2.46	2.47	0.01
Q27-2. Streets/roads	2.28	2.28	0.00
Rating Cumberland County and its municipalities as a place to live for the following groups:			
Q28-11. Military affiliated	3.60	3.28	0.32
Q28-5. Young adults entering workforce	2.09	2.30	0.21
Q28-2. Families with children under 18	2.69	2.52	0.17
Q28-4. Senior citizens	2.50	2.34	0.16
Q28-8. LGBTQ	2.46	2.30	0.16
Q28-6. Persons with disabilities	2.31	2.46	0.15
Q28-7. Residents from other parts of US	2.78	2.64	0.14
Q28-9. Single adults	2.38	2.51	0.13
Q28-3. Middle-aged adults	2.60	2.48	0.12
Q28-1. Immigrants from other countries	2.70	2.60	0.10
Q28-10. Racial & ethnic minorities	2.52	2.42	0.10
Agreement with how members of different races, cultures, and ethnicities in Cumberland County receive the following:			
Q30-6. The same treatment in the justice system as I do	2.84	3.14	0.30
Q30-5. The same health care options as I do	3.09	3.32	0.23
Q30-1. The same amount of respect as I do	3.12	3.31	0.19
Q30-4. The same educational opportunities as I do	3.30	3.38	0.08
Q30-2. The same general opportunities as I do	3.07	3.11	0.04
Q30-3. The same job opportunities as I do	3.03	3.02	0.01

Question 6

How often Respondents have Done Each of the Following:			
Q6-8. Volunteered your time	4.59	2.75	1.84
Q6-7. Attended any club or organizational meeting	3.94	2.13	1.81
Q6-6. Attended a public recreational event	3.85	2.27	1.58
Q6-1. Worked on a community project	3.55	2.23	1.32
Q6-10 Had someone of a different race in your home	5.07	4.00	1.07
Q6-3. Attended a public meeting or rally	2.63	1.64	0.99
Q6-9 Had friends over to your home	4.97	4.03	0.94
Q6-11. Had someone from a different neighborhood in your home	4.73	3.80	0.93
Q6-14. Been in the home of someone from a different neighborhood	4.81	3.92	0.89
Q6-4. Attended a public meeting for City/Town affairs	2.29	1.41	0.88
Q6-5. Attended a public meeting for school system affairs	2.41	1.58	0.83
Q6-13. Been in the home of someone of a different race	4.33	3.73	0.60
Q6-2. Donated blood	2.04	1.64	0.40
Q6-15. Been in the home of someone you consider to be a community leader	2.47	2.08	0.39
Q6-12. Had someone you consider to be a community leader in your home	2.27	1.90	0.37
Q6-16. Attended a religious service	5.67	5.42	0.25

Greater Fayetteville United Social Capital Community Survey: Findings Report

GAP Analysis: Respondents who have or have not served as an officer or served on a committee of any local club or other organization

Question	Mean Rating for Respondents Who Responded "Yes" to Q7	Mean Rating for Respondents Who Responded "No" to Q7	GAP
Perceptions of Trust:			
Q1-2. People in your neighborhood	3.74	3.24	0.50
Q1-1. Other people in general	3.23	2.81	0.42
Q29-8. Middle Eastern/Arab people	3.41	3.01	0.40
Q29-3. Black or African American people	3.71	3.38	0.33
Q29-4. Heterosexual people	3.70	3.38	0.32
Q1-6. Cumberland County government officials	3.18	2.88	0.30
Q29-6. LGBTQ people	3.58	3.29	0.29
Q1-5. City/town government officials	3.15	2.87	0.28
Q29-7. Native Hawaiian or other Pacific Island people	3.65	3.39	0.26
Q1-4. People who work in stores where you shop	3.62	3.37	0.25
Q29-5. Hispanic or Latino people	3.63	3.39	0.24
Q1-3. Law enforcement in your local community	3.86	3.64	0.22
Q29-1. American Indian or Alaskan Native people	3.69	3.47	0.22
Q29-2. Asian people	3.58	3.40	0.18
Q1-7. State government officials	2.87	2.72	0.15
Q1-8. Federal government officials	2.71	2.58	0.13
Rate Your Agreement With the Following:			
Q18-1. Television is my primary form of information & entertainment	3.10	3.34	0.24
Q33-2. All schools have the same resources	1.92	2.13	0.21
Q18-3. Some other medium is my primary form of information & entertainment	2.90	2.71	0.19
Q18-2. Internet is my primary form of information & entertainment	3.34	3.48	0.14
Q33-1. The school system promotes positive relations with students of diverse backgrounds	3.19	3.19	0.00
Perceptions of Cumberland County and its Municipalities:			
Q27-5. Law enforcement	3.31	3.11	0.20
Q27-9. Court system	2.65	2.46	0.19
Q27-10. Overall quality of life in Cumberland County & its municipalities	2.76	2.64	0.12
Q27-7. Social services	2.60	2.50	0.10
Q27-6. Public school system	2.66	2.59	0.07
Q27-8. Public/mental health	2.24	2.31	0.07
Q27-2. Streets/roads	2.30	2.36	0.06
Q27-3. Parks & recreation	2.78	2.83	0.05
Q27-4. Trash removal	3.08	3.11	0.03
Q27-1. Availability of affordable housing in Cumberland County & its municipalities	2.48	2.49	0.01
Rating Cumberland County and its municipalities as a place to live for the following groups:			
Q28-11. Military affiliated	3.73	3.55	0.18
Q28-4. Senior citizens	2.63	2.51	0.12
Q28-5. Young adults entering workforce	2.12	2.23	0.11
Q28-7. Residents from other parts of US	2.83	2.72	0.11
Q28-10. Racial & ethnic minorities	2.67	2.57	0.10
Q28-2. Families with children under 18	2.77	2.67	0.10
Q28-3. Middle-aged adults	2.72	2.62	0.10
Q28-1. Immigrants from other countries	2.75	2.69	0.06
Q28-9. Single adults	2.43	2.47	0.04
Q28-8. LGBTQ	2.38	2.41	0.03
Q28-6. Persons with disabilities	2.37	2.40	0.03
Agreement with how members of different races, cultures, and ethnicities in Cumberland County receive the following:			
Q30-5. The same health care options as I do	3.09	3.23	0.14
Q30-3. The same job opportunities as I do	2.94	3.07	0.13
Q30-6. The same treatment in the justice system as I do	2.87	2.98	0.11
Q30-2. The same general opportunities as I do	3.01	3.08	0.07
Q30-1. The same amount of respect as I do	3.06	3.12	0.06
Q30-4. The same educational opportunities as I do	3.33	3.35	0.02

Question 6

How often Respondents have Done Each of the Following:			
Q6-7. Attended any club or organizational meeting	5.59	2.79	2.80
Q6-1. Worked on a community project	4.96	2.45	2.51
Q6-8. Volunteered your time	5.95	3.48	2.47
Q6-15. Been in the home of someone you consider to be a community leader	3.20	1.95	1.25
Q6-12. Had someone you consider to be a community leader in your home	3.02	1.85	1.17
Q6-3. Attended a public meeting or rally	3.10	1.99	1.11
Q6-16. Attended a religious service	6.49	5.50	0.99
Q6-4. Attended a public meeting for City/Town affairs	2.63	1.70	0.93
Q6-6. Attended a public recreational event	4.02	3.16	0.86
Q6-14. Been in the home of someone from a different neighborhood	5.07	4.38	0.69
Q6-11. Had someone from a different neighborhood in your home	4.98	4.33	0.65
Q6-9. Had friends over to your home	5.21	4.68	0.53
Q6-5. Attended a public meeting for school system affairs	2.49	2.03	0.46
Q6-13. Been in the home of someone of a different race	4.50	4.08	0.42
Q6-2. Donated blood	2.09	1.81	0.28
Q6-10. Had someone of a different race in your home	4.75	4.73	0.02

Greater Fayetteville United Social Capital Community Survey: Findings Report

GAP Analysis: Frequency at which respondents worked on a community project

Question	Mean Rating for Respondents Who Responded "More Than Once/Week" or "Once a Week" to Q6-1. Rating = 9/8	Mean Rating for Respondents Who Responded "Never" or "Once" to Q6-1. Rating = 2/1	GAP
Perceptions of Trust:			
Q1-1. Other people in general	3.33	2.78	0.55
Q29-6. LGBTQ people	3.70	3.20	0.50
Q29-8. Middle Eastern/Arab people	3.41	2.92	0.49
Q29-3. Black or African American people	3.74	3.33	0.41
Q29-2. Asian people	3.73	3.33	0.40
Q1-2. People in your neighborhood	3.65	3.26	0.39
Q1-5. City/town government officials	3.26	2.89	0.37
Q29-1. American Indian or Alaskan Native people	3.78	3.42	0.36
Q29-7. Native Hawaiian or other Pacific Island people	3.69	3.33	0.36
Q29-5. Hispanic or Latino people	3.67	3.34	0.33
Q29-4. Heterosexual people	3.63	3.33	0.30
Q1-6. Cumberland County government officials	3.16	2.94	0.22
Q1-8. Federal government officials	2.82	2.65	0.17
Q1-7. State government officials	2.92	2.79	0.13
Q1-3. Law enforcement in your local community	3.59	3.67	0.08
Q1-4. People who work in stores where you shop	3.41	3.38	0.03
Rate Your Agreement With the Following:			
Q18-1. Television is my primary form of information & entertainment	3.00	3.50	0.50
Q33-2. All schools have the same resources	2.04	2.23	0.19
Q33-1. The school system promotes positive relations with students of diverse backgrounds	3.14	3.24	0.10
Q18-2. Internet is my primary form of information & entertainment	3.33	3.39	0.06
Q18-3. Some other medium is my primary form of information & entertainment	2.70	2.69	0.01
Perceptions of Cumberland County and its Municipalities:			
Q27-10. Overall quality of life in Cumberland County & its municipalities	2.40	2.71	0.31
Q27-4. Trash removal	2.92	3.20	0.28
Q27-3. Parks & recreation	2.58	2.85	0.27
Q27-5. Law enforcement	2.98	3.22	0.24
Q27-6. Public school system	2.46	2.64	0.18
Q27-2. Streets/roads	2.22	2.38	0.16
Q27-1. Availability of affordable housing in Cumberland County & its municipalities	2.33	2.47	0.14
Q27-8. Public/mental health	2.22	2.36	0.14
Q27-9. Court system	2.64	2.51	0.13
Q27-7. Social services	2.42	2.53	0.11
Rating Cumberland County and its municipalities as a place to live for the following groups:			
Q28-1. Immigrants from other countries	2.54	2.77	0.23
Q28-8. LGBTQ	2.19	2.42	0.23
Q28-4. Senior citizens	2.35	2.56	0.21
Q28-3. Middle-aged adults	2.52	2.71	0.19
Q28-2. Families with children under 18	2.59	2.76	0.17
Q28-5. Young adults entering workforce	2.09	2.26	0.17
Q28-9. Single adults	2.35	2.51	0.16
Q28-6. Persons with disabilities	2.25	2.39	0.14
Q28-7. Residents from other parts of US	2.68	2.78	0.10
Q28-11. Military affiliated	3.66	3.61	0.05
Q28-10. Racial & ethnic minorities	2.55	2.59	0.04
Agreement with how members of different races, cultures, and ethnicities in Cumberland County receive the following:			
Q30-6. The same treatment in the justice system as I do	2.79	3.04	0.25
Q30-4. The same educational opportunities as I do	3.19	3.40	0.21
Q30-5. The same health care options as I do	3.02	3.21	0.19
Q30-1. The same amount of respect as I do	3.04	3.16	0.12
Q30-2. The same general opportunities as I do	3.02	3.13	0.11
Q30-3. The same job opportunities as I do	3.00	3.09	0.09

Question 6

How often Respondents have Done Each of the Following:

Q6-8. Volunteered your time	7.09	2.71	4.38
Q6-7. Attended any club or organizational meeting	5.90	2.32	3.58
Q6-3. Attended a public meeting or rally	4.49	1.60	2.89
Q6-4. Attended a public meeting for City/Town affairs	3.98	1.41	2.57
Q6-15. Been in the home of someone you consider to be a community leader	4.12	1.72	2.40
Q6-6. Attended a public recreational event	4.94	2.66	2.28
Q6-5. Attended a public meeting for school system affairs	3.84	1.63	2.21
Q6-2. Donated blood	3.40	1.47	1.93
Q6-14. Been in the home of someone from a different neighborhood	5.69	4.08	1.61
Q6-12. Had someone you consider to be a community leader in your home	3.30	1.76	1.54
Q6-13. Been in the home of someone of a different race	5.16	3.69	1.47
Q6-16. Attended a religious service	6.56	5.09	1.47
Q6-11. Had someone from a different neighborhood in your home	5.38	4.03	1.35
Q6-10. Had someone of a different race in your home	5.52	4.32	1.20
Q6-9. Had friends over to your home	5.33	4.39	0.94

Greater Fayetteville United Social Capital Community Survey: Findings Report

GAP Analysis: Frequency at which respondents volunteered their time

Question	Mean Rating for Respondents Who Responded "More Than Once/Week" or "Once a Week" to Q6-8. Rating = 9/8	Mean Rating for Respondents Who Responded "Never" or "Once" to Q6-8. Rating = 2/1	GAP
Perceptions of Trust:			
Q1-1. Other people in general	3.27	2.68	0.59
Q1-2. People in your neighborhood	3.61	3.08	0.53
Q29-6. LGBTQ people	3.59	3.12	0.47
Q29-8. Middle Eastern/Arab people	3.30	2.84	0.46
Q29-2. Asian people	3.64	3.23	0.41
Q29-1. American Indian or Alaskan Native people	3.71	3.35	0.36
Q29-3. Black or African American people	3.63	3.28	0.35
Q29-5. Hispanic or Latino people	3.56	3.27	0.29
Q1-4. People who work in stores where you shop	3.56	3.30	0.26
Q29-4. Heterosexual people	3.53	3.28	0.25
Q29-7. Native Hawaiian or other Pacific Island people	3.51	3.31	0.20
Q1-5. City/town government officials	3.04	2.86	0.18
Q1-6. Cumberland County government officials	3.01	2.91	0.10
Q1-7. State government officials	2.74	2.81	0.07
Q1-3. Law enforcement in your local community	3.67	3.62	0.05
Q1-8. Federal government officials	2.60	2.63	0.03
Rate Your Agreement With the Following:			
Q18-1. Television is my primary form of information & entertainment	3.02	3.53	0.51
Q33-2. All schools have the same resources	1.88	2.23	0.35
Q18-2. Internet is my primary form of information & entertainment	3.34	3.45	0.11
Q18-3. Some other medium is my primary form of information & entertainment	2.77	2.66	0.11
Q33-1. The school system promotes positive relations with students of diverse backgrounds	3.15	3.14	0.01
Perceptions of Cumberland County and its Municipalities:			
Q27-3. Parks & recreation	2.66	2.85	0.19
Q27-6. Public school system	2.45	2.62	0.17
Q27-7. Social services	2.48	2.61	0.13
Q27-5. Law enforcement	3.18	3.08	0.10
Q27-1. Availability of affordable housing in Cumberland County & its municipalities	2.57	2.47	0.10
Q27-4. Trash removal	3.26	3.16	0.10
Q27-2. Streets/roads	2.34	2.38	0.04
Q27-10. Overall quality of life in Cumberland County & its municipalities	2.65	2.62	0.03
Q27-9. Court system	2.58	2.57	0.01
Q27-8. Public/mental health	2.39	2.39	0.00
Rating Cumberland County and its municipalities as a place to live for the following groups:			
Q28-8. LGBTQ	2.33	2.55	0.22
Q28-11. Military affiliated	3.79	3.61	0.18
Q28-1. Immigrants from other countries	2.59	2.75	0.16
Q28-10. Racial & ethnic minorities	2.68	2.58	0.10
Q28-5. Young adults entering workforce	2.15	2.23	0.08
Q28-3. Middle-aged adults	2.66	2.59	0.07
Q28-2. Families with children under 18	2.71	2.67	0.04
Q28-4. Senior citizens	2.46	2.48	0.02
Q28-6. Persons with disabilities	2.38	2.36	0.02
Q28-7. Residents from other parts of US	2.78	2.77	0.01
Q28-9. Single adults	2.47	2.48	0.01
Agreement with how members of different races, cultures, and ethnicities in Cumberland County receive the following:			
Q30-3. The same job opportunities as I do	3.27	3.01	0.26
Q30-4. The same educational opportunities as I do	3.56	3.35	0.21
Q30-2. The same general opportunities as I do	3.27	3.08	0.19
Q30-5. The same health care options as I do	3.27	3.18	0.09
Q30-6. The same treatment in the justice system as I do	2.97	2.90	0.07
Q30-1. The same amount of respect as I do	3.16	3.14	0.02

Question 6

How often Respondents have Done Each of the Following:			
Q6-1. Worked on a community project	5.77	1.42	4.35
Q6-7. Attended any club or organizational meeting	5.99	1.83	4.16
Q6-16. Attended a religious service	7.35	4.52	2.83
Q6-6. Attended a public recreational event	4.67	2.29	2.38
Q6-3. Attended a public meeting or rally	3.68	1.52	2.16
Q6-15. Been in the home of someone you consider to be a community leader	3.48	1.40	2.08
Q6-4. Attended a public meeting for City/Town affairs	3.11	1.34	1.77
Q6-5. Attended a public meeting for school system affairs	3.29	1.58	1.71
Q6-12. Had someone you consider to be a community leader in your home	3.20	1.57	1.63
Q6-14. Been in the home of someone from a different neighborhood	5.62	4.00	1.62
Q6-13. Been in the home of someone of a different race	5.24	3.64	1.60
Q6-9 Had friends over to your home	5.82	4.29	1.53
Q6-2. Donated blood	2.82	1.42	1.40
Q6-11. Had someone from a different neighborhood in your home	5.30	4.09	1.21
Q6-10 Had someone of a different race in your home	5.40	4.38	1.02

Greater Fayetteville United Social Capital Community Survey: Findings Report

GAP Analysis: Frequency at which respondents attended a religious service

Question	Mean Rating for Respondents Who Responded "More Than Once/Week" or "Once a Week" to Q6-16. Rating = 9/8	Mean Rating for Respondents Who Responded "Never" or "Once" to Q6-16. Rating = 2/1	GAP
Perceptions of Trust:			
Q1-1. Other people in general	3.06	2.80	0.26
Q1-3. Law enforcement in your local community	3.83	3.62	0.21
Q1-2. People in your neighborhood	3.48	3.32	0.16
Q1-8. Federal government officials	2.63	2.47	0.16
Q29-3. Black or African American people	3.61	3.47	0.14
Q29-1. American Indian or Alaskan Native people	3.66	3.53	0.13
Q1-6. Cumberland County government officials	3.00	2.89	0.11
Q29-2. Asian people	3.57	3.50	0.07
Q29-4. Heterosexual people	3.54	3.58	0.04
Q1-5. City/town government officials	2.96	2.92	0.04
Q29-6. LGBTQ people	3.50	3.47	0.03
Q29-8. Middle Eastern/Arab people	3.25	3.22	0.03
Q1-7. State government officials	2.75	2.72	0.03
Q29-5. Hispanic or Latino people	3.56	3.54	0.02
Q29-7. Native Hawaiian or other Pacific Island people	3.56	3.54	0.02
Q1-4. People who work in stores where you shop	3.45	3.43	0.02
Rate Your Agreement With the Following:			
Q33-2. All schools have the same resources	1.98	2.28	0.30
Q18-2. Internet is my primary form of information & entertainment	3.33	3.59	0.26
Q18-1. Television is my primary form of information & entertainment	3.17	3.26	0.09
Q18-3. Some other medium is my primary form of information & entertainment	2.76	2.82	0.06
Q33-1. The school system promotes positive relations with students of diverse backgrounds	3.26	3.24	0.02
Perceptions of Cumberland County and its Municipalities:			
Q27-1. Availability of affordable housing in Cumberland County & its municipalities	2.35	2.69	0.34
Q27-5. Law enforcement	3.22	3.07	0.15
Q27-9. Court system	2.58	2.66	0.08
Q27-2. Streets/roads	2.31	2.36	0.05
Q27-6. Public school system	2.62	2.59	0.03
Q27-4. Trash removal	3.14	3.12	0.02
Q27-7. Social services	2.59	2.57	0.02
Q27-10. Overall quality of life in Cumberland County & its municipalities	2.68	2.67	0.01
Q27-3. Parks & recreation	2.79	2.78	0.01
Q27-8. Public/mental health	2.38	2.37	0.01
Rating Cumberland County and its municipalities as a place to live for the following groups:			
Q28-10. Racial & ethnic minorities	2.59	2.76	0.17
Q28-6. Persons with disabilities	2.44	2.30	0.14
Q28-2. Families with children under 18	2.67	2.78	0.11
Q28-3. Middle-aged adults	2.68	2.61	0.07
Q28-8. LGBTQ	2.43	2.36	0.07
Q28-5. Young adults entering workforce	2.10	2.15	0.05
Q28-9. Single adults	2.48	2.53	0.05
Q28-11. Military affiliated	3.65	3.62	0.03
Q28-1. Immigrants from other countries	2.70	2.72	0.02
Q28-4. Senior citizens	2.49	2.47	0.02
Q28-7. Residents from other parts of US	2.78	2.80	0.02
Agreement with how members of different races, cultures, and ethnicities in Cumberland County receive the following:			
Q30-2. The same general opportunities as I do	3.05	3.16	0.11
Q30-3. The same job opportunities as I do	3.03	3.13	0.10
Q30-5. The same health care options as I do	3.27	3.21	0.06
Q30-6. The same treatment in the justice system as I do	2.96	2.92	0.04
Q30-4. The same educational opportunities as I do	3.38	3.41	0.03
Q30-1. The same amount of respect as I do	3.12	3.15	0.03

Question 6

How often Respondents have Done Each of the Following:			
Q6-8. Volunteered your time	4.98	2.58	2.40
Q6-7. Attended any club or organizational meeting	4.23	2.29	1.94
Q6-1. Worked on a community project	3.67	2.06	1.61
Q6-3. Attended a public meeting or rally	2.67	1.43	1.24
Q6-6. Attended a public recreational event	3.76	2.75	1.01
Q6-4. Attended a public meeting for City/Town affairs	2.32	1.38	0.94
Q6-5. Attended a public meeting for school system affairs	2.44	1.52	0.92
Q6-15. Been in the home of someone you consider to be a community leader	2.57	1.69	0.88
Q6-12. Had someone you consider to be a community leader in your home	2.39	1.58	0.81
Q6-2. Donated blood	2.12	1.37	0.75
Q6-14. Been in the home of someone from a different neighborhood	4.90	4.28	0.62
Q6-13. Been in the home of someone of a different race	4.41	3.95	0.46
Q6-9. Had friends over to your home	5.08	4.69	0.39
Q6-10. Had someone of a different race in your home	4.79	4.53	0.26
Q6-11. Had someone from a different neighborhood in your home	4.63	4.54	0.09

Greater Fayetteville United Social Capital Community Survey: Findings Report

GAP Analysis: Respondent's overall state of health

Question	Mean Rating for Respondents Who Responded "Excellent" to Q16.	Mean Rating for Respondents Who Responded "Fair" or "Poor" to Q16.	GAP
Perceptions of Trust:			
Q1-2. People in your neighborhood	3.61	3.08	0.53
Q1-1. Other people in general	3.18	2.75	0.43
Q1-3. Law enforcement in your local community	3.91	3.55	0.36
Q29-8. Middle Eastern/Arab people	3.40	3.04	0.36
Q29-4. Heterosexual people	3.68	3.41	0.27
Q29-2. Asian people	3.69	3.48	0.21
Q1-5. City/town government officials	3.08	2.89	0.19
Q1-6. Cumberland County government officials	3.08	2.89	0.19
Q29-7. Native Hawaiian or other Pacific Island people	3.64	3.46	0.18
Q29-6. LGBTQ people	3.53	3.39	0.14
Q29-5. Hispanic or Latino people	3.59	3.49	0.10
Q1-4. People who work in stores where you shop	3.47	3.38	0.09
Q29-3. Black or African American people	3.59	3.52	0.07
Q1-8. Federal government officials	2.65	2.59	0.06
Q29-1. American Indian or Alaskan Native people	3.56	3.60	0.04
Q1-7. State government officials	2.79	2.77	0.02
Rate Your Agreement With the Following:			
Q18-1. Television is my primary form of information & entertainment	2.80	3.60	0.80
Q18-2. Internet is my primary form of information & entertainment	3.69	3.20	0.49
Q33-1. The school system promotes positive relations with students of diverse backgrounds	3.24	3.08	0.16
Q33-2. All schools have the same resources	1.86	1.97	0.11
Q18-3. Some other medium is my primary form of information & entertainment	2.69	2.72	0.03
Perceptions of Cumberland County and its Municipalities:			
Q27-1. Availability of affordable housing in Cumberland County & its municipalities	2.91	2.14	0.77
Q27-4. Trash removal	3.38	2.92	0.46
Q27-9. Court system	2.81	2.36	0.45
Q27-5. Law enforcement	3.40	2.98	0.42
Q27-2. Streets/roads	2.52	2.11	0.41
Q27-10. Overall quality of life in Cumberland County & its municipalities	2.78	2.51	0.27
Q27-3. Parks & recreation	2.83	2.66	0.17
Q27-7. Social services	2.58	2.41	0.17
Q27-6. Public school system	2.48	2.61	0.13
Q27-8. Public/mental health	2.23	2.32	0.09
Rating Cumberland County and its municipalities as a place to live for the following groups:			
Q28-11. Military affiliated	3.87	3.49	0.38
Q28-10. Racial & ethnic minorities	2.73	2.38	0.35
Q28-6. Persons with disabilities	2.54	2.20	0.34
Q28-2. Families with children under 18	2.85	2.54	0.31
Q28-7. Residents from other parts of US	2.94	2.65	0.29
Q28-1. Immigrants from other countries	2.93	2.66	0.27
Q28-3. Middle-aged adults	2.72	2.47	0.25
Q28-9. Single adults	2.42	2.31	0.11
Q28-4. Senior citizens	2.58	2.48	0.10
Q28-5. Young adults entering workforce	2.18	2.13	0.05
Q28-8. LGBTQ	2.34	2.34	0.00
Agreement with how members of different races, cultures, and ethnicities in Cumberland County receive the following:			
Q30-5. The same health care options as I do	3.39	3.09	0.30
Q30-6. The same treatment in the justice system as I do	3.11	2.84	0.27
Q30-4. The same educational opportunities as I do	3.42	3.25	0.17
Q30-3. The same job opportunities as I do	3.09	2.98	0.11
Q30-1. The same amount of respect as I do	3.18	3.18	0.00
Q30-2. The same general opportunities as I do	3.07	3.07	0.00

Question 6

How often Respondents have Done Each of the Following:			
Q6-7. Attended any club or organizational meeting	4.33	2.77	1.56
Q6-8. Volunteered your time	4.98	3.63	1.35
Q6-9 Had friends over to your home	5.77	4.46	1.31
Q6-10 Had someone of a different race in your home	5.68	4.38	1.30
Q6-11. Had someone from a different neighborhood in your home	5.44	4.15	1.29
Q6-14. Been in the home of someone from a different neighborhood	5.41	4.26	1.15
Q6-1. Worked on a community project	3.84	2.78	1.06
Q6-6. Attended a public recreational event	4.02	3.18	0.84
Q6-13. Been in the home of someone of a different race	4.82	4.01	0.81
Q6-2. Donated blood	2.38	1.64	0.74
Q6-16. Attended a religious service	6.19	5.56	0.63
Q6-3. Attended a public meeting or rally	2.73	2.10	0.63
Q6-4. Attended a public meeting for City/Town affairs	2.16	1.91	0.25
Q6-5. Attended a public meeting for school system affairs	2.06	2.28	0.22
Q6-15. Been in the home of someone you consider to be a community leader	2.48	2.27	0.21
Q6-12. Had someone you consider to be a community leader in your home	2.35	2.21	0.14

Greater Fayetteville United Social Capital Community Survey: Findings Report

GAP Analysis: How happy respondent is

Question	Mean Rating for Respondents Who Responded "Very Happy" to Q17. Rating = 5	Mean Rating for Respondents Who Responded "Not Very Happy" or "Not Happy at All" to Q17. Rating = 2/1	GAP
Perceptions of Trust:			
Q1-6. Cumberland County government officials	3.20	2.37	0.83
Q1-3. Law enforcement in your local community	3.83	3.04	0.79
Q1-7. State government officials	2.99	2.23	0.76
Q1-1. Other people in general	3.16	2.44	0.72
Q1-5. City/town government officials	3.15	2.47	0.68
Q1-2. People in your neighborhood	3.52	2.87	0.65
Q1-8. Federal government officials	2.81	2.18	0.63
Q29-8. Middle Eastern/Arab people	3.36	2.74	0.62
Q29-3. Black or African American people	3.65	3.11	0.54
Q1-4. People who work in stores where you shop	3.54	3.09	0.45
Q29-5. Hispanic or Latino people	3.60	3.17	0.43
Q29-2. Asian people	3.59	3.16	0.43
Q29-7. Native Hawaiian or other Pacific Island people	3.63	3.22	0.41
Q29-4. Heterosexual people	3.57	3.31	0.26
Q29-1. American Indian or Alaskan Native people	3.60	3.38	0.22
Q29-6. LGBTQ people	3.41	3.22	0.19
Rate Your Agreement With the Following:			
Q33-1. The school system promotes positive relations with students of diverse backgrounds	3.39	2.67	0.72
Q18-3. Some other medium is my primary form of information & entertainment	2.92	2.63	0.29
Q33-2. All schools have the same resources	2.11	1.84	0.27
Q18-1. Television is my primary form of information & entertainment	3.11	3.34	0.23
Q18-2. Internet is my primary form of information & entertainment	3.25	3.40	0.15
Perceptions of Cumberland County and its Municipalities:			
Q27-1. Availability of affordable housing in Cumberland County & its municipalities	2.74	1.90	0.84
Q27-10. Overall quality of life in Cumberland County & its municipalities	2.87	2.05	0.82
Q27-9. Court system	2.82	2.05	0.77
Q27-7. Social services	2.70	2.15	0.55
Q27-8. Public/mental health	2.40	1.90	0.50
Q27-5. Law enforcement	3.24	2.76	0.48
Q27-2. Streets/roads	2.44	2.07	0.37
Q27-6. Public school system	2.64	2.28	0.36
Q27-3. Parks & recreation	2.92	2.65	0.27
Q27-4. Trash removal	3.20	2.93	0.27
Rating Cumberland County and its municipalities as a place to live for the following groups:			
Q28-2. Families with children under 18	2.94	2.15	0.79
Q28-4. Senior citizens	2.80	2.02	0.78
Q28-3. Middle-aged adults	2.91	2.15	0.76
Q28-6. Persons with disabilities	2.59	1.98	0.61
Q28-8. LGBTQ	2.65	2.07	0.58
Q28-7. Residents from other parts of US	2.95	2.38	0.57
Q28-1. Immigrants from other countries	2.98	2.41	0.57
Q28-5. Young adults entering workforce	2.37	1.84	0.53
Q28-10. Racial & ethnic minorities	2.78	2.27	0.51
Q28-9. Single adults	2.65	2.20	0.45
Q28-11. Military affiliated	3.70	3.75	0.05
Agreement with how members of different races, cultures, and ethnicities in Cumberland County receive the following:			
Q30-4. The same educational opportunities as I do	3.57	2.80	0.77
Q30-5. The same health care options as I do	3.35	2.63	0.72
Q30-6. The same treatment in the justice system as I do	3.18	2.50	0.68
Q30-3. The same job opportunities as I do	3.19	2.63	0.56
Q30-2. The same general opportunities as I do	3.23	2.69	0.54
Q30-1. The same amount of respect as I do	3.33	2.80	0.53

Question 6

How often Respondents have Done Each of the Following:			
Q6-16. Attended a religious service	6.35	4.48	1.87
Q6-7. Attended any club or organizational meeting	3.99	2.39	1.60
Q6-1. Worked on a community project	3.35	1.79	1.56
Q6-8. Volunteered your time	4.31	2.88	1.43
Q6-15. Been in the home of someone you consider to be a community leader	2.68	1.67	1.01
Q6-12. Had someone you consider to be a community leader in your home	2.53	1.52	1.01
Q6-9. Had friends over to your home	5.24	4.25	0.99
Q6-3. Attended a public meeting or rally	2.48	1.79	0.69
Q6-14. Been in the home of someone from a different neighborhood	4.81	4.22	0.59
Q6-4. Attended a public meeting for City/Town affairs	2.14	1.56	0.58
Q6-11. Had someone from a different neighborhood in your home	4.77	4.22	0.55
Q6-10. Had someone of a different race in your home	5.10	4.63	0.47
Q6-2. Donated blood	2.14	1.72	0.42
Q6-6. Attended a public recreational event	3.60	3.23	0.37
Q6-5. Attended a public meeting for school system affairs	2.27	1.95	0.32
Q6-13. Been in the home of someone of a different race	4.52	4.39	0.13

Greater Fayetteville United Social Capital Community Survey: Findings Report

GAP Analysis: Perceptions of the ease of finding a job in Cumberland County

Question	Mean Rating for Respondents Who Responded "Easier to Find a Job" or "About the Same" Q25. Rating = 1/3	Mean Rating for Respondents Who Responded "Harder to Find a Job" Q25. Rating = 2	GAP
Perceptions of Trust:			
Q1-7. State government officials	2.89	2.52	0.37
Q1-6. Cumberland County government officials	3.06	2.72	0.34
Q1-3. Law enforcement in your local community	3.84	3.51	0.33
Q1-8. Federal government officials	2.74	2.41	0.33
Q1-1. Other people in general	3.03	2.71	0.32
Q1-5. City/town government officials	3.04	2.73	0.31
Q1-2. People in your neighborhood	3.45	3.20	0.25
Q1-4. People who work in stores where you shop	3.53	3.30	0.23
Q29-5. Hispanic or Latino people	3.52	3.38	0.14
Q29-8. Middle Eastern/Arab people	3.16	3.03	0.13
Q29-7. Native Hawaiian or other Pacific Island people	3.52	3.43	0.09
Q29-4. Heterosexual people	3.50	3.42	0.08
Q29-1. American Indian or Alaskan Native people	3.58	3.51	0.07
Q29-2. Asian people	3.47	3.41	0.06
Q29-6. LGBTQ people	3.40	3.35	0.05
Q29-3. Black or African American people	3.47	3.47	0.00
Rate Your Agreement With the Following:			
Q33-1. The school system promotes positive relations with students of diverse backgrounds	3.41	2.92	0.49
Q33-2. All schools have the same resources	2.17	1.93	0.24
Q18-2. Internet is my primary form of information & entertainment	3.56	3.37	0.19
Q18-1. Television is my primary form of information & entertainment	3.24	3.28	0.04
Q18-3. Some other medium is my primary form of information & entertainment	2.78	2.78	0.00
Perceptions of Cumberland County and its Municipalities:			
Q27-1. Availability of affordable housing in Cumberland County & its municipalities	2.68	2.20	0.48
Q27-7. Social services	2.75	2.31	0.44
Q27-10. Overall quality of life in Cumberland County & its municipalities	2.84	2.43	0.41
Q27-8. Public/mental health	2.47	2.10	0.37
Q27-9. Court system	2.64	2.29	0.35
Q27-5. Law enforcement	3.27	3.00	0.27
Q27-2. Streets/roads	2.43	2.17	0.26
Q27-6. Public school system	2.71	2.47	0.24
Q27-4. Trash removal	3.21	2.98	0.23
Q27-3. Parks & recreation	2.92	2.70	0.22
Rating Cumberland County and its municipalities as a place to live for the following groups:			
Q28-5. Young adults entering workforce	2.40	1.94	0.46
Q28-3. Middle-aged adults	2.84	2.40	0.44
Q28-2. Families with children under 18	2.86	2.46	0.40
Q28-4. Senior citizens	2.71	2.32	0.39
Q28-9. Single adults	2.61	2.24	0.37
Q28-10. Racial & ethnic minorities	2.75	2.39	0.36
Q28-7. Residents from other parts of US	2.86	2.59	0.27
Q28-1. Immigrants from other countries	2.82	2.61	0.21
Q28-11. Military affiliated	3.73	3.52	0.21
Q28-6. Persons with disabilities	2.47	2.29	0.18
Q28-8. LGBTQ	2.48	2.35	0.13
Agreement with how members of different races, cultures, and ethnicities in Cumberland County receive the following:			
Q30-3. The same job opportunities as I do	3.18	2.80	0.38
Q30-5. The same health care options as I do	3.37	2.99	0.38
Q30-4. The same educational opportunities as I do	3.48	3.13	0.35
Q30-2. The same general opportunities as I do	3.19	2.86	0.33
Q30-6. The same treatment in the justice system as I do	3.03	2.80	0.23
Q30-1. The same amount of respect as I do	3.17	3.00	0.17

Question 6

How often Respondents have Done Each of the Following:			
Q6-8. Volunteered your time	4.41	3.93	0.48
Q6-11. Had someone from a different neighborhood in your home	4.75	4.30	0.45
Q6-9 Had friends over to your home	5.12	4.72	0.40
Q6-14. Been in the home of someone from a different neighborhood	4.79	4.48	0.31
Q6-5. Attended a public meeting for school system affairs	2.06	2.34	0.28
Q6-7. Attended any club or organizational meeting	3.72	3.45	0.27
Q6-16. Attended a religious service	5.73	5.94	0.21
Q6-4. Attended a public meeting for City/Town affairs	1.90	2.09	0.19
Q6-1. Worked on a community project	3.25	3.07	0.18
Q6-2. Donated blood	1.87	1.97	0.10
Q6-6. Attended a public recreational event	3.50	3.42	0.08
Q6-12. Had someone you consider to be a community leader in your home	2.22	2.17	0.05
Q6-15. Been in the home of someone you consider to be a community leader	2.28	2.25	0.03
Q6-10 Had someone of a different race in your home	4.82	4.80	0.02
Q6-13. Been in the home of someone of a different race	4.29	4.28	0.01
Q6-3. Attended a public meeting or rally	2.34	2.34	0.00

Greater Fayetteville United Social Capital Community Survey: Findings Report

GAP Analysis: Race or Ethnicity (White and Black or African American)

Question	Mean Rating for Respondents Who Indicated their race/ethnicity is White	Mean Rating for Respondents Who Indicated their race/ethnicity is Black or African American	GAP
Perceptions of Trust:			
Q1-3. Law enforcement in your local community	4.03	3.28	0.75
Q1-4. People who work in stores where you shop	3.64	3.19	0.45
Q1-8. Federal government officials	2.75	2.35	0.40
Q29-2. Asian people	3.59	3.23	0.36
Q1-7. State government officials	2.89	2.55	0.34
Q1-5. City/town government officials	3.10	2.77	0.33
Q1-6. Cumberland County government officials	3.10	2.78	0.32
Q1-2. People in your neighborhood	3.52	3.20	0.32
Q29-7. Native Hawaiian or other Pacific Island people	3.57	3.28	0.29
Q29-1. American Indian or Alaskan Native people	3.65	3.38	0.27
Q1-1. Other people in general	3.05	2.79	0.26
Q29-4. Heterosexual people	3.56	3.31	0.25
Q29-6. LGBTQ people	3.47	3.24	0.23
Q29-5. Hispanic or Latino people	3.51	3.32	0.19
Q29-8. Middle Eastern/Arab people	3.13	3.07	0.06
Q29-3. Black or African American people	3.47	3.45	0.02
Rate Your Agreement With the Following:			
Q18-3. Some other medium is my primary form of information & entertainment	2.66	2.84	0.18
Q33-2. All schools have the same resources	2.14	2.01	0.13
Q33-1. The school system promotes positive relations with students of diverse backgrounds	3.26	3.17	0.09
Q18-1. Television is my primary form of information & entertainment	3.30	3.26	0.04
Q18-2. Internet is my primary form of information & entertainment	3.36	3.40	0.04
Perceptions of Cumberland County and its Municipalities:			
Q27-5. Law enforcement	3.32	2.92	0.40
Q27-1. Availability of affordable housing in Cumberland County & its municipalities	2.58	2.38	0.20
Q27-9. Court system	2.58	2.41	0.17
Q27-8. Public/mental health	2.22	2.38	0.16
Q27-6. Public school system	2.57	2.67	0.10
Q27-2. Streets/roads	2.33	2.28	0.05
Q27-10. Overall quality of life in Cumberland County & its municipalities	2.66	2.71	0.05
Q27-3. Parks & recreation	2.81	2.86	0.05
Q27-4. Trash removal	3.10	3.12	0.02
Q27-7. Social services	2.55	2.54	0.01
Rating Cumberland County and its municipalities as a place to live for the following groups:			
Q28-10. Racial & ethnic minorities	2.74	2.47	0.27
Q28-6. Persons with disabilities	2.29	2.44	0.15
Q28-3. Middle-aged adults	2.73	2.60	0.13
Q28-7. Residents from other parts of US	2.83	2.70	0.13
Q28-11. Military affiliated	3.56	3.68	0.12
Q28-8. LGBTQ	2.34	2.46	0.12
Q28-4. Senior citizens	2.49	2.61	0.12
Q28-5. Young adults entering workforce	2.26	2.15	0.11
Q28-2. Families with children under 18	2.74	2.66	0.08
Q28-1. Immigrants from other countries	2.75	2.71	0.04
Q28-9. Single adults	2.48	2.44	0.04
Agreement with how members of different races, cultures, and ethnicities in Cumberland County receive the following:			
Q30-6. The same treatment in the justice system as I do	3.12	2.68	0.44
Q30-4. The same educational opportunities as I do	3.47	3.19	0.28
Q30-2. The same general opportunities as I do	3.18	2.91	0.27
Q30-3. The same job opportunities as I do	3.16	2.90	0.26
Q30-1. The same amount of respect as I do	3.16	2.99	0.17
Q30-5. The same health care options as I do	3.21	3.15	0.06

Question 6

How often Respondents have Done Each of the Following:			
Q6-16. Attended a religious service	5.35	6.31	0.96
Q6-10 Had someone of a different race in your home	4.92	4.28	0.64
Q6-5. Attended a public meeting for school system affairs	1.98	2.47	0.49
Q6-9 Had friends over to your home	5.00	4.59	0.41
Q6-14. Been in the home of someone from a different neighborhood	4.73	4.37	0.36
Q6-11. Had someone from a different neighborhood in your home	4.59	4.26	0.33
Q6-13. Been in the home of someone of a different race	4.25	3.95	0.30
Q6-3. Attended a public meeting or rally	2.18	2.46	0.28
Q6-4. Attended a public meeting for City/Town affairs	1.90	2.17	0.27
Q6-6. Attended a public recreational event	3.51	3.33	0.18
Q6-2. Donated blood	1.87	1.99	0.12
Q6-1. Worked on a community project	3.13	3.24	0.11
Q6-7. Attended any club or organizational meeting	3.66	3.55	0.11
Q6-15. Been in the home of someone you consider to be a community leader	2.32	2.26	0.06
Q6-12. Had someone you consider to be a community leader in your home	2.27	2.25	0.02
Q6-8. Volunteered your time	4.24	4.25	0.01

Greater Fayetteville United Social Capital Community Survey: Findings Report

GAP Analysis: Respondent's Military Affiliation

Question	Mean Rating for Respondents Who Have ANY Military Affiliation, Q48=1/2/3/4/5/6/7	Mean Rating for Respondents Who Have NO Military Affiliation, Q48=8	GAP
Perceptions of Trust:			
Q1-2. People in your neighborhood	3.45	3.28	0.17
Q1-3. Law enforcement in your local community	3.79	3.64	0.15
Q29-8. Middle Eastern/Arab people	3.19	3.04	0.15
Q29-2. Asian people	3.52	3.39	0.13
Q1-7. State government officials	2.83	2.71	0.12
Q1-8. Federal government officials	2.68	2.56	0.12
Q29-7. Native Hawaiian or other Pacific Island people	3.51	3.43	0.08
Q29-1. American Indian or Alaskan Native people	3.57	3.51	0.06
Q29-5. Hispanic or Latino people	3.48	3.43	0.05
Q1-1. Other people in general	2.91	2.95	0.04
Q1-4. People who work in stores where you shop	3.46	3.42	0.04
Q29-3. Black or African American people	3.49	3.45	0.04
Q29-6. LGBTQ people	3.36	3.38	0.02
Q29-4. Heterosexual people	3.46	3.45	0.01
Q1-5. City/town government officials	2.95	2.95	0.00
Q1-6. Cumberland County government officials	2.96	2.96	0.00
Rate Your Agreement With the Following:			
Q33-1. The school system promotes positive relations with students of diverse backgrounds	3.12	3.27	0.15
Q18-2. Internet is my primary form of information & entertainment	3.37	3.51	0.14
Q18-1. Television is my primary form of information & entertainment	3.23	3.32	0.09
Q33-2. All schools have the same resources	2.12	2.04	0.08
Q18-3. Some other medium is my primary form of information & entertainment	2.73	2.78	0.05
Perceptions of Cumberland County and its Municipalities:			
Q27-1. Availability of affordable housing in Cumberland County & its municipalities	2.57	2.41	0.16
Q27-5. Law enforcement	3.23	3.10	0.13
Q27-7. Social services	2.61	2.48	0.13
Q27-4. Trash removal	3.06	3.15	0.09
Q27-3. Parks & recreation	2.77	2.85	0.08
Q27-2. Streets/roads	2.30	2.37	0.07
Q27-10. Overall quality of life in Cumberland County & its municipalities	2.65	2.71	0.06
Q27-6. Public school system	2.58	2.64	0.06
Q27-8. Public/mental health	2.28	2.34	0.06
Q27-9. Court system	2.50	2.54	0.04
Rating Cumberland County and its municipalities as a place to live for the following groups:			
Q28-11. Military affiliated	3.46	3.75	0.29
Q28-10. Racial & ethnic minorities	2.72	2.49	0.23
Q28-9. Single adults	2.57	2.37	0.20
Q28-8. LGBTQ	2.50	2.32	0.18
Q28-5. Young adults entering workforce	2.15	2.27	0.12
Q28-4. Senior citizens	2.61	2.50	0.11
Q28-7. Residents from other parts of US	2.71	2.81	0.10
Q28-6. Persons with disabilities	2.44	2.37	0.07
Q28-1. Immigrants from other countries	2.72	2.70	0.02
Q28-3. Middle-aged adults	2.67	2.65	0.02
Q28-2. Families with children under 18	2.70	2.71	0.01
Agreement with how members of different races, cultures, and ethnicities in Cumberland County receive the following:			
Q30-2. The same general opportunities as I do	3.20	2.97	0.23
Q30-3. The same job opportunities as I do	3.16	2.94	0.22
Q30-1. The same amount of respect as I do	3.22	3.02	0.20
Q30-4. The same educational opportunities as I do	3.45	3.26	0.19
Q30-5. The same health care options as I do	3.27	3.14	0.13
Q30-6. The same treatment in the justice system as I do	3.03	2.90	0.13
Question 6			
How often Respondents have Done Each of the Following:			
Q6-13. Been in the home of someone of a different race	4.44	3.98	0.46
Q6-10. Had someone of a different race in your home	4.94	4.54	0.40
Q6-11. Had someone from a different neighborhood in your home	4.66	4.36	0.30
Q6-2. Donated blood	2.05	1.80	0.25
Q6-16. Attended a religious service	5.90	5.66	0.24
Q6-7. Attended any club or organizational meeting	3.64	3.43	0.21
Q6-3. Attended a public meeting or rally	2.19	2.38	0.19
Q6-14. Been in the home of someone from a different neighborhood	4.67	4.51	0.16
Q6-9. Had friends over to your home	4.91	4.77	0.14
Q6-15. Been in the home of someone you consider to be a community leader	2.25	2.39	0.14
Q6-4. Attended a public meeting for City/Town affairs	1.92	2.04	0.12
Q6-6. Attended a public recreational event	3.45	3.33	0.12
Q6-1. Worked on a community project	3.10	3.14	0.04
Q6-12. Had someone you consider to be a community leader in your home	2.20	2.22	0.02
Q6-8. Volunteered your time	4.14	4.15	0.01
Q6-5. Attended a public meeting for school system affairs	2.16	2.17	0.01

Section 3:

Tabular Data

Q1. PERCEPTIONS OF TRUST: Please indicate how much you trust the following groups of people. Using a scale of 1 to 5, where 5 means "Trust them a lot" and 1 means "Don't trust them at all", please rate the following:

(N=615)

	Trust them a lot	Trust them some	Neutral	Trust them only a little	Don't trust them at all	Don't know
Q1a. Other people in general	22 3.6%	193 31.4%	171 27.8%	132 21.5%	74 12.0%	23 3.7%
Q1b. People in your neighborhood	93 15.1%	225 36.6%	126 20.5%	103 16.7%	45 7.3%	23 3.7%
Q1c. Law enforcement in your local community	181 29.4%	212 34.5%	85 13.8%	85 13.8%	32 5.2%	20 3.3%
Q1d. People who work in stores where you shop	68 11.1%	251 40.8%	169 27.5%	71 11.5%	29 4.7%	27 4.4%
Q1e. City/town government officials	32 5.2%	197 32.0%	145 23.6%	129 21.0%	80 13.0%	32 5.2%
Q1f. Cumberland County government officials	39 6.3%	190 30.9%	141 22.9%	128 20.8%	81 13.2%	36 5.9%
Q1g. State government officials	27 4.4%	164 26.7%	140 22.8%	152 24.7%	100 16.3%	32 5.2%
Q1h. Federal government officials	26 4.2%	147 23.9%	129 21.0%	145 23.6%	138 22.4%	30 4.9%

WITHOUT "DON'T KNOW"

Q1. PERCEPTIONS OF TRUST: Please indicate how much you trust the following groups of people. Using a scale of 1 to 5, where 5 means "Trust them a lot" and 1 means "Don't trust them at all", please rate the following: (without "don't know")

(N=615)

	Trust them a lot	Trust them some	Neutral	Trust them only a little	Don't trust them at all
Q1a. Other people in general	22 3.7%	193 32.6%	171 28.9%	132 22.3%	74 12.5%
Q1b. People in your neighborhood	93 15.7%	225 38.0%	126 21.3%	103 17.4%	45 7.6%
Q1c. Law enforcement in your local community	181 30.4%	212 35.6%	85 14.3%	85 14.3%	32 5.4%
Q1d. People who work in stores where you shop	68 11.6%	251 42.7%	169 28.7%	71 12.1%	29 4.9%
Q1e. City/town government officials	32 5.5%	197 33.8%	145 24.9%	129 22.1%	80 13.7%
Q1f. Cumberland County government officials	39 6.7%	190 32.8%	141 24.4%	128 22.1%	81 14.0%
Q1g. State government officials	27 4.6%	164 28.1%	140 24.0%	152 26.1%	100 17.2%
Q1h. Federal government officials	26 4.4%	147 25.1%	129 22.1%	145 24.8%	138 23.6%

Q2. How interested are you in politics and national affairs?

Q2. How interested are you in politics & national affairs?	Number	Percent
Very interested	244	39.7 %
Somewhat interested	211	34.3 %
Slightly interested	81	13.2 %
Not interested	30	4.9 %
Not at all interested	36	5.9 %
Don't know	13	2.1 %
Total	615	100.0 %

WITHOUT "DON'T KNOW"

Q2. How interested are you in politics and national affairs? (without "don't know")

Q2. How interested are you in politics & national affairs?	Number	Percent
Very interested	244	40.5 %
Somewhat interested	211	35.0 %
Slightly interested	81	13.5 %
Not interested	30	5.0 %
Not at all interested	36	6.0 %
Total	602	100.0 %

Q3. Are you currently registered to vote?

Q3. Are you currently registered to vote?	Number	Percent
Yes	561	91.2 %
No	42	6.8 %
Not provided	12	2.0 %
Total	615	100.0 %

WITHOUT "NOT PROVIDED"

Q3. Are you currently registered to vote? (without "not provided")

Q3. Are you currently registered to vote?	Number	Percent
Yes	561	93.0 %
No	42	7.0 %
Total	603	100.0 %

Q4. TRUST IN GOVERNMENT: Please indicate how much of the time you think you can trust the following. Using a scale of 1 to 4 where 4 means "Always" and 1 means "Never."

(N=615)

	Always	Most of time	Sometimes	Never	Don't know
Q4a. Federal Government	20 3.3%	126 20.5%	336 54.6%	96 15.6%	37 6.0%
Q4b. State Government	19 3.1%	135 22.0%	340 55.3%	78 12.7%	43 7.0%
Q4c. County Government	23 3.7%	156 25.4%	318 51.7%	68 11.1%	50 8.1%
Q4d. City/Town Government	24 3.9%	172 28.0%	297 48.3%	64 10.4%	58 9.4%

WITHOUT "DON'T KNOW"

Q4. TRUST IN GOVERNMENT: Please indicate how much of the time you think you can trust the following. Using a scale of 1 to 4 where 4 means "Always" and 1 means "Never." (without "don't know")

(N=615)

	Always	Most of time	Sometimes	Never
Q4a. Federal Government	20 3.5%	126 21.8%	336 58.1%	96 16.6%
Q4b. State Government	19 3.3%	135 23.6%	340 59.4%	78 13.6%
Q4c. County Government	23 4.1%	156 27.6%	318 56.3%	68 12.0%
Q4d. City/Town Government	24 4.3%	172 30.9%	297 53.3%	64 11.5%

Q5. Thinking POLITICALLY and SOCIALLY, how would you describe your personal political outlook?

Q5. How would you describe your personal political outlook?	Number	Percent
Very conservative	68	11.1 %
Moderately conservative	140	22.8 %
Middle-of-the-road	190	30.9 %
Moderately liberal	94	15.3 %
Very liberal	35	5.7 %
Other	8	1.3 %
Don't know	80	13.0 %
Total	615	100.0 %

WITHOUT "DON'T KNOW"

Q5. Thinking POLITICALLY and SOCIALLY, how would you describe your personal political outlook? (without "don't know")

Q5. How would you describe your personal political outlook?	Number	Percent
Very conservative	68	12.7 %
Moderately conservative	140	26.2 %
Middle-of-the-road	190	35.5 %
Moderately liberal	94	17.6 %
Very liberal	35	6.5 %
Other	8	1.5 %
Total	535	100.0 %

Q5. Other

Q5. Other	Number	Percent
Libertarian	2	33.3 %
Not interested	1	16.7 %
Radical progressive	1	16.7 %
Not involved	1	16.7 %
Open-minded	1	16.7 %
Total	6	100.0 %

Q6. About how many times in the past 12 months have you done each of the following? Using a scale of 1 to 9 where 9 means "More Than Once a Week" and 1 means "Never."

(N=615)

	More than once a week	Once a week	Twice a month	Once a month	5-9 times	2-4 times	A few times	Once	Never	Don't know
Q6a. Worked on a community project	34 5.5%	19 3.1%	29 4.7%	29 4.7%	30 4.9%	43 7.0%	103 16.7%	62 10.1%	237 38.5%	29 4.7%
Q6b. Donated blood	17 2.8%	1 0.2%	2 0.3%	10 1.6%	27 4.4%	30 4.9%	48 7.8%	50 8.1%	411 66.8%	19 3.1%
Q6c. Attended a public meeting or rally	17 2.8%	2 0.3%	7 1.1%	19 3.1%	23 3.7%	27 4.4%	114 18.5%	79 12.8%	308 50.1%	19 3.1%
Q6d. Attended a public meeting for City/Town affairs	19 3.1%	1 0.2%	5 0.8%	13 2.1%	10 1.6%	25 4.1%	70 11.4%	73 11.9%	379 61.6%	20 3.3%
Q6e. Attended a public meeting for school system affairs	19 3.1%	1 0.2%	6 1.0%	18 2.9%	30 4.9%	32 5.2%	66 10.7%	57 9.3%	362 58.9%	24 3.9%
Q6f. Attended a public recreational event	28 4.6%	12 2.0%	21 3.4%	41 6.7%	53 8.6%	54 8.8%	179 29.1%	59 9.6%	151 24.6%	17 2.8%
Q6g. Attended any club or organizational meeting	32 5.2%	30 4.9%	27 4.4%	69 11.2%	37 6.0%	46 7.5%	102 16.6%	41 6.7%	210 34.1%	21 3.4%
Q6h. Volunteered your time	53 8.6%	33 5.4%	46 7.5%	47 7.6%	60 9.8%	39 6.3%	121 19.7%	42 6.8%	133 21.6%	41 6.7%
Q6i. Had friends over to your home	54 8.8%	40 6.5%	61 9.9%	67 10.9%	81 13.2%	54 8.8%	156 25.4%	30 4.9%	41 6.7%	31 5.0%
Q6j. Had someone of a different race in your home	76 12.4%	40 6.5%	38 6.2%	35 5.7%	72 11.7%	54 8.8%	170 27.6%	31 5.0%	49 8.0%	50 8.1%
Q6k. Had someone from a different neighborhood in your home	55 8.9%	43 7.0%	47 7.6%	45 7.3%	65 10.6%	61 9.9%	160 26.0%	39 6.3%	69 11.2%	31 5.0%
Q6l. Had someone you consider to be a community leader in your home	24 3.9%	9 1.5%	5 0.8%	18 2.9%	13 2.1%	22 3.6%	80 13.0%	41 6.7%	362 58.9%	41 6.7%
Q6m. Been in the home of someone of a different race	59 9.6%	28 4.6%	35 5.7%	39 6.3%	59 9.6%	46 7.5%	170 27.6%	42 6.8%	93 15.1%	44 7.2%
Q6n. Been in the home of someone from a different neighborhood	60 9.8%	38 6.2%	48 7.8%	45 7.3%	73 11.9%	56 9.1%	153 24.9%	39 6.3%	63 10.2%	40 6.5%

Q6. About how many times in the past 12 months have you done each of the following? Using a scale of 1 to 9 where 9 means "More Than Once a Week" and 1 means "Never."

	More than once a week	Once a week	Twice a month	Once a month	5-9 times	2-4 times	A few times	Once	Never	Don't know
Q6o. Been in the home of someone you consider to be a community leader	30 4.9%	9 1.5%	2 0.3%	19 3.1%	20 3.3%	26 4.2%	75 12.2%	48 7.8%	352 57.2%	34 5.5%
Q6p. Attended a religious service	120 19.5%	139 22.6%	27 4.4%	23 3.7%	37 6.0%	29 4.7%	85 13.8%	28 4.6%	65 10.6%	62 10.1%

WITHOUT "DON'T KNOW"

Q6. About how many times in the past 12 months have you done each of the following? Using a scale of 1 to 9 where 9 means "More Than Once a Week" and 1 means "Never." (without "don't know")

(N=615)

	More than once a week	Once a week	Twice a month	Once a month	5-9 times	2-4 times	A few times	Once	Never
Q6a. Worked on a community project	34 5.8%	19 3.2%	29 4.9%	29 4.9%	30 5.1%	43 7.3%	103 17.6%	62 10.6%	237 40.4%
Q6b. Donated blood	17 2.9%	1 0.2%	2 0.3%	10 1.7%	27 4.5%	30 5.0%	48 8.1%	50 8.4%	411 69.0%
Q6c. Attended a public meeting or rally	17 2.9%	2 0.3%	7 1.2%	19 3.2%	23 3.9%	27 4.5%	114 19.1%	79 13.3%	308 51.7%
Q6d. Attended a public meeting for City/Town affairs	19 3.2%	1 0.2%	5 0.8%	13 2.2%	10 1.7%	25 4.2%	70 11.8%	73 12.3%	379 63.7%
Q6e. Attended a public meeting for school system affairs	19 3.2%	1 0.2%	6 1.0%	18 3.0%	30 5.1%	32 5.4%	66 11.2%	57 9.6%	362 61.3%
Q6f. Attended a public recreational event	28 4.7%	12 2.0%	21 3.5%	41 6.9%	53 8.9%	54 9.0%	179 29.9%	59 9.9%	151 25.3%
Q6g. Attended any club or organizational meeting	32 5.4%	30 5.1%	27 4.5%	69 11.6%	37 6.2%	46 7.7%	102 17.2%	41 6.9%	210 35.4%
Q6h. Volunteered your time	53 9.2%	33 5.7%	46 8.0%	47 8.2%	60 10.5%	39 6.8%	121 21.1%	42 7.3%	133 23.2%
Q6i. Had friends over to your home	54 9.2%	40 6.8%	61 10.4%	67 11.5%	81 13.9%	54 9.2%	156 26.7%	30 5.1%	41 7.0%
Q6j. Had someone of a different race in your home	76 13.5%	40 7.1%	38 6.7%	35 6.2%	72 12.7%	54 9.6%	170 30.1%	31 5.5%	49 8.7%
Q6k. Had someone from a different neighborhood in your home	55 9.4%	43 7.4%	47 8.0%	45 7.7%	65 11.1%	61 10.4%	160 27.4%	39 6.7%	69 11.8%
Q6l. Had someone you consider to be a community leader in your home	24 4.2%	9 1.6%	5 0.9%	18 3.1%	13 2.3%	22 3.8%	80 13.9%	41 7.1%	362 63.1%
Q6m. Been in the home of someone of a different race	59 10.3%	28 4.9%	35 6.1%	39 6.8%	59 10.3%	46 8.1%	170 29.8%	42 7.4%	93 16.3%

WITHOUT "DON'T KNOW"

Q6. About how many times in the past 12 months have you done each of the following? Using a scale of 1 to 9 where 9 means "More Than Once a Week" and 1 means "Never." (without "don't know")

	More than once a week	Once a week	Twice a month	Once a month	5-9 times	2-4 times	A few times	Once	Never
Q6n. Been in the home of someone from a different neighborhood	60 10.4%	38 6.6%	48 8.3%	45 7.8%	73 12.7%	56 9.7%	153 26.6%	39 6.8%	63 11.0%
Q6o. Been in the home of someone you consider to be a community leader	30 5.2%	9 1.5%	2 0.3%	19 3.3%	20 3.4%	26 4.5%	75 12.9%	48 8.3%	352 60.6%
Q6p. Attended a religious service	120 21.7%	139 25.1%	27 4.9%	23 4.2%	37 6.7%	29 5.2%	85 15.4%	28 5.1%	65 11.8%

Q7. In the past 12 months, have you served as an officer or served on a committee of any local club or other organization?

Q7. Have you served as an officer or served on a committee of any local club or other organization in past 12 months?

	Number	Percent
Yes	155	25.2 %
No	447	72.7 %
Don't know	13	2.1 %
Total	615	100.0 %

WITHOUT "DON'T KNOW"

Q7. In the past 12 months, have you served as an officer or served on a committee of any local club or other organization? (without "don't know")

Q7. Have you served as an officer or served on a committee of any local club or other organization in past 12 months?

	Number	Percent
Yes	155	25.7 %
No	447	74.3 %
Total	602	100.0 %

Q8. Please indicate ALL of the organizations or causes you have volunteered to do work with in the past 12 months.

Q8. Organizations or causes you have volunteered to do work with in past 12 months	Number	Percent
Place of worship	307	50.0 %
Fighting a particular disease	75	12.2 %
School or youth program	201	32.7 %
Helping the poor	230	37.5 %
Helping the elderly	171	27.9 %
Arts or cultural organization	67	10.9 %
Neighborhood organization	80	13.0 %
Civic organization	76	12.4 %
Other	74	12.1 %
None	152	24.8 %
Total	1433	

WITHOUT "NONE"

Q8. Please indicate ALL of the organizations or causes you have volunteered to do work with in the past 12 months. (without "none")

Q8. Organizations or causes you have volunteered to do work with in past 12 months	Number	Percent
Place of worship	305	66.0 %
Fighting a particular disease	75	16.2 %
School or youth program	201	43.5 %
Helping the poor	230	49.8 %
Helping the elderly	171	37.0 %
Arts or cultural organization	67	14.5 %
Neighborhood organization	80	17.3 %
Civic organization	76	16.5 %
Other	74	16.0 %
Total	1279	

Q8. Other

Q8. Other	Number	Percent
VA	3	4.1 %
Sorority	2	2.7 %
Hurricane Mathew	2	2.7 %
Healthcare	2	2.7 %
Red Cross	2	2.7 %
Voter advocate	1	1.4 %
Medical school	1	1.4 %
Non-profit	1	1.4 %
American Red Cross	1	1.4 %
Environmental impact/food security	1	1.4 %
Pro-life crisis pregnancy center	1	1.4 %
Military	1	1.4 %
Action Pathways	1	1.4 %
Labor Organization	1	1.4 %
political campaign	1	1.4 %
religious organization	1	1.4 %
Jail ministry	1	1.4 %
Veterans	1	1.4 %
Alcoholics anonymous of Fayetteville and surrounding areas	1	1.4 %
GAL	1	1.4 %
USO	1	1.4 %
Air Force	1	1.4 %
CAPS animal shelter	1	1.4 %
ICL	1	1.4 %
ALANON	1	1.4 %
Political candidate	1	1.4 %
MOM project	1	1.4 %
Feeding Community	1	1.4 %
adult literacy fum	1	1.4 %
Suicide awarness	1	1.4 %
Forest Service and the Appalachin Trail	1	1.4 %
NC State Veterans Park	1	1.4 %
Wounded Warrior Project/Second Harvest Food Bank	1	1.4 %
Animal causes & people with special needs	1	1.4 %
Honor Society	1	1.4 %
EH Simmons Community Center	1	1.4 %
Cumberland County Business Network	1	1.4 %
Missions/Feeding Programs Foodbank	1	1.4 %
Teach free tax classes at local schools and places of business	1	1.4 %
Help raise scholarship funds for college students	1	1.4 %
Teacher professional meetings	1	1.4 %
Special Needs	1	1.4 %
Neighbor	1	1.4 %
Rape Crisis Center	1	1.4 %
UBA, NCAMWMW, FAMWMW	1	1.4 %
Radio Station	1	1.4 %
Union organized functions	1	1.4 %
Animal rescue professional organization	1	1.4 %
Government commissions	1	1.4 %
SF Assn	1	1.4 %
youth	1	1.4 %

Q8. Other

Q8. Other	Number	Percent
military organization	1	1.4 %
Family Readiness Group	1	1.4 %
Personal	1	1.4 %
NAEYC	1	1.4 %
Operation Engage Feeding the Homeless	1	1.4 %
OES	1	1.4 %
environment	1	1.4 %
Army roadside clean-up	1	1.4 %
Gun Club	1	1.4 %
Pilot Club of Fayetteville	1	1.4 %
Helping people with mental or physical disabilities, e.g. Autism	1	1.4 %
Animal welfare	1	1.4 %
Recreational activities, birding clubs	1	1.4 %
Dealing with strangers to encourage	1	1.4 %
Guam Community Volunteer Police Reservist	1	1.4 %
Flag Detail	1	1.4 %
Residential Treatment Program	1	1.4 %
Total	74	100.0 %

Q8a. Please indicate how many people from the groups you volunteered with are in each of the following categories. Using a scale of 1 to 5 where 5 means "All" and 1 means "Only a Few."

(N=462)

	All	Most	Some	Only a few	None	Don't know
Q8a-a. How many are the same gender as you	18 3.9%	111 24.0%	255 55.2%	41 8.9%	12 2.6%	25 5.4%
Q8a-b. How many are of the same ethnicity as you	30 6.5%	97 21.0%	238 51.5%	55 11.9%	18 3.9%	24 5.2%
Q8a-c. How many have the same level of education as you	15 3.2%	82 17.7%	188 40.7%	69 14.9%	23 5.0%	85 18.4%

WITHOUT "DON'T KNOW"

Q8a. Please indicate how many people from the groups you volunteered with are in each of the following categories. Using a scale of 1 to 5 where 5 means "All" and 1 means "Only a Few." (without "don't know")

(N=462)

	All	Most	Some	Only a few	None
Q8a-a. How many are the same gender as you	18 4.1%	111 25.4%	255 58.4%	41 9.4%	12 2.7%
Q8a-b. How many are of the same ethnicity as you	30 6.8%	97 22.1%	238 54.3%	55 12.6%	18 4.1%
Q8a-c. How many have the same level of education as you	15 4.0%	82 21.8%	188 49.9%	69 18.3%	23 6.1%

Q9. Thinking of your own life, please indicate if any of the following obstacles or barriers make it difficult for you to be involved with your community.

Q9. Any obstacles or barriers that make it difficult for you to be involved with your community?	Number	Percent
An inflexible or demanding work schedule	245	40.2 %
Inadequate childcare	63	10.3 %
Inadequate transportation	55	9.0 %
Feeling somewhat unwelcome	104	17.0 %
Concerns for safety	92	15.1 %
Lack of information	219	35.9 %
Feeling that you can't make a difference	80	13.1 %
Inadequate healthcare	50	8.2 %
Inadequate resources/income	114	18.7 %
None	140	23.0 %
Total	1162	

WITHOUT "NONE"

Q9. Thinking of your own life, please indicate if any of the following obstacles or barriers make it difficult for you to be involved with your community. (without "none")

Q9. Any obstacles or barriers that make it difficult for you to be involved with your community?	Number	Percent
An inflexible or demanding work schedule	245	52.1 %
Inadequate childcare	63	13.4 %
Inadequate transportation	55	11.7 %
Feeling somewhat unwelcome	104	22.1 %
Concerns for safety	92	19.6 %
Lack of information	218	46.4 %
Feeling that you can't make a difference	79	16.8 %
Inadequate healthcare	50	10.6 %
Inadequate resources/income	113	24.0 %
Total	1019	

Q10. Thinking back to the neighborhood you lived in when you were growing up, about what percent of the neighbors were of the same race/ethnicity as you?

Q10. About what percent of neighbors were of same race/ethnicity as you thinking back to neighborhood you lived when you were growing up?

	Number	Percent
Less than 10%	40	6.5 %
11%-20%	15	2.4 %
21%-30%	15	2.4 %
31%-40%	28	4.6 %
41%-50%	41	6.7 %
51%-60%	38	6.2 %
61%-70%	30	4.9 %
71%-80%	42	6.8 %
81%-90%	70	11.4 %
91%-100%	251	40.8 %
Don't know	45	7.3 %
Total	615	100.0 %

WITHOUT "DON'T KNOW"

Q10. Thinking back to the neighborhood you lived in when you were growing up, about what percent of the neighbors were of the same race/ethnicity as you? (without "don't know")

Q10. About what percent of neighbors were of same race/ethnicity as you thinking back to neighborhood you lived when you were growing up?

	Number	Percent
Less than 10%	40	7.0 %
11%-20%	15	2.6 %
21%-30%	15	2.6 %
31%-40%	28	4.9 %
41%-50%	41	7.2 %
51%-60%	38	6.7 %
61%-70%	30	5.3 %
71%-80%	42	7.4 %
81%-90%	70	12.3 %
91%-100%	251	44.0 %
Total	570	100.0 %

Q11. Thinking about your neighborhood now, about what percent of your neighbors are of the same race/ethnicity as you?

Q11. About what percent of your neighbors were of same race/ethnicity as you thinking about your neighborhood now?

	Number	Percent
Less than 10%	54	8.8 %
11%-20%	29	4.7 %
21%-30%	43	7.0 %
31%-40%	53	8.6 %
41%-50%	96	15.6 %
51%-60%	96	15.6 %
61%-70%	44	7.2 %
71%-80%	46	7.5 %
81%-90%	52	8.5 %
91%-100%	53	8.6 %
Don't know	49	8.0 %
Total	615	100.0 %

WITHOUT "DON'T KNOW"

Q11. Thinking about your neighborhood now, about what percent of your neighbors are of the same race/ethnicity as you? (without "don't know")

Q11. About what percent of your neighbors were of same race/ethnicity as you thinking about your neighborhood now?

	Number	Percent
Less than 10%	54	9.5 %
11%-20%	29	5.1 %
21%-30%	43	7.6 %
31%-40%	53	9.4 %
41%-50%	96	17.0 %
51%-60%	96	17.0 %
61%-70%	44	7.8 %
71%-80%	46	8.1 %
81%-90%	52	9.2 %
91%-100%	53	9.4 %
Total	566	100.0 %

Q12. What is your religious preference?

<u>Q12. Your religious preference</u>	<u>Number</u>	<u>Percent</u>
Buddhism	7	1.1 %
Catholicism	66	10.7 %
Hinduism	2	0.3 %
Judaism	6	1.0 %
Islam	7	1.1 %
Protestantism	154	25.0 %
Other Christianity	263	42.8 %
Other	25	4.1 %
None	53	8.6 %
Don't know/refused	52	8.5 %
Total	635	

WITHOUT "DON'T KNOW/REFUSED"

Q12. What is your religious preference? (without "don't know/refused")

<u>Q12. Your religious preference</u>	<u>Number</u>	<u>Percent</u>
Buddhism	7	1.2 %
Catholicism	66	11.7 %
Hinduism	2	0.4 %
Judaism	6	1.1 %
Islam	7	1.2 %
Protestantism	154	27.4 %
Other Christianity	263	46.7 %
Other	25	4.4 %
None	53	9.4 %
Total	583	

Q12. Other

<u>Q12. Other</u>	<u>Number</u>	<u>Percent</u>
Holiness	4	16.0 %
Spiritual	3	12.0 %
Unitarian	1	4.0 %
Hebrew Israelite	1	4.0 %
Angelican	1	4.0 %
Israelit	1	4.0 %
Jehovahs witness	1	4.0 %
Jainism	1	4.0 %
No title, I believe in God	1	4.0 %
Morman	1	4.0 %
Believer	1	4.0 %
Pagan	1	4.0 %
LDS	1	4.0 %
I am a universalist	1	4.0 %
Wiccan	1	4.0 %
Drudism	1	4.0 %
5 Percenter	1	4.0 %
Open-minded	1	4.0 %
one that is not listed	1	4.0 %
Cogic	1	4.0 %
Total	25	100.0 %

Q13. Not including weddings and funerals, how often do you attend religious services?

Q13. How often do you attend religious services?	Number	Percent
More than once a week	139	22.6 %
Once a week	135	22.0 %
Almost every week	48	7.8 %
Once or twice a month	50	8.1 %
A few times per year	95	15.4 %
Less than a few times per year	64	10.4 %
Never	65	10.6 %
Don't know/refused	19	3.1 %
Total	615	100.0 %

WITHOUT "DON'T KNOW/REFUSED"

Q13. Not including weddings and funerals, how often do you attend religious services? (without "don't know/refused")

Q13. How often do you attend religious services?	Number	Percent
More than once a week	139	23.3 %
Once a week	135	22.7 %
Almost every week	48	8.1 %
Once or twice a month	50	8.4 %
A few times per year	95	15.9 %
Less than a few times per year	64	10.7 %
Never	65	10.9 %
Total	596	100.0 %

Q14. People and families contribute money, property, or other assets for a wide variety of charitable purposes. During the past 12 months, approximately how much money did you and the other members of your household contribute to all secular causes and all religious causes, including your local religious congregation.

Q14. Approximately how much money did you contribute to all causes, secular & religious, during past 12 months?

	Number	Percent
None	88	14.3 %
Less than \$100	91	14.8 %
\$100 to \$499	117	19.0 %
\$500 to \$999	83	13.5 %
\$1000 to \$4999	98	15.9 %
\$5000+	66	10.7 %
Don't know/refused	72	11.7 %
Total	615	100.0 %

WITHOUT "DON'T KNOW/REFUSED"

Q14. People and families contribute money, property, or other assets for a wide variety of charitable purposes. During the past 12 months, approximately how much money did you and the other members of your household contribute to all secular causes and all religious causes, including your local religious congregation. (without "don't know/refused")

Q14. Approximately how much money did you contribute to all causes, secular & religious, during past 12 months?

	Number	Percent
None	88	16.2 %
Less than \$100	91	16.8 %
\$100 to \$499	117	21.5 %
\$500 to \$999	83	15.3 %
\$1000 to \$4999	98	18.0 %
\$5000+	66	12.2 %
Total	543	100.0 %

Q15. Are you covered by any type of health insurance such as coverage through an employer, Medicaid, Medicare, Affordable Care Act (ACA)/Obamacare, or private health insurance?

Q15. Are you covered by any type of health insurance?	Number	Percent
Yes	528	85.9 %
No	63	10.2 %
Don't know	24	3.9 %
Total	615	100.0 %

Q15. Are you covered by any type of health insurance such as coverage through an employer, Medicaid, Medicare, Affordable Care Act (ACA)/Obamacare, or private health insurance? (without "don't know")

Q15. Are you covered by any type of health insurance?	Number	Percent
Yes	528	89.3 %
No	63	10.7 %
Total	591	100.0 %

Q15a. (If YES to Question 15) Is your coverage adequate?

Q15a. Is your coverage adequate?	Number	Percent
Yes	440	83.3 %
No	68	12.9 %
Don't know	20	3.8 %
Total	528	100.0 %

WITHOUT "DON'T KNOW"

Q15a. (If YES to Question 15) Is your coverage adequate? (without "don't know")

Q15a. Is your coverage adequate?	Number	Percent
Yes	440	86.6 %
No	68	13.4 %
Total	508	100.0 %

Q16. How would you describe your overall state of health these days? Would you say it is:

Q16. How would you describe your overall state of health these days?	Number	Percent
Excellent	66	10.7 %
Very good	169	27.5 %
Good	207	33.7 %
Fair	125	20.3 %
Poor	37	6.0 %
Don't know/refused	11	1.8 %
Total	615	100.0 %

WITHOUT "DON'T KNOW/REFUSED"

Q16. How would you describe your overall state of health these days? Would you say it is: (without "don't know/refused")

Q16. How would you describe your overall state of health these days?	Number	Percent
Excellent	66	10.9 %
Very good	169	28.0 %
Good	207	34.3 %
Fair	125	20.7 %
Poor	37	6.1 %
Total	604	100.0 %

Q17. All things considered, how happy would you say you are?

Q17. How happy would you say you are?	Number	Percent
Very happy	154	25.0 %
Happy	276	44.9 %
Neutral	110	17.9 %
Not very happy	53	8.6 %
Not happy at all	9	1.5 %
Don't know/refused	13	2.1 %
Total	615	100.0 %

WITHOUT "DON'T KNOW/REFUSED"

Q17. All things considered, how happy would you say you are? (without "don't know/refused")

Q17. How happy would you say you are?	Number	Percent
Very happy	154	25.6 %
Happy	276	45.8 %
Neutral	110	18.3 %
Not very happy	53	8.8 %
Not happy at all	9	1.5 %
Total	602	100.0 %

Q18. Please rate your level of agreement with the following. Using a scale of 1 to 5, where 5 means "Strongly Agree" and 1 means "Strongly Disagree."

(N=615)

	Strongly Agree	Agree	Neutral	Disagree	Strongly Disagree	Don't Know
Q18a. Television is my primary form of information & entertainment	108 17.6%	185 30.1%	143 23.3%	92 15.0%	73 11.9%	14 2.3%
Q18b. Internet is my primary form of information & entertainment	103 16.7%	216 35.1%	142 23.1%	78 12.7%	44 7.2%	32 5.2%
Q18c. Some other medium is my primary form of information & entertainment	24 3.9%	119 19.3%	176 28.6%	129 21.0%	83 13.5%	84 13.7%

WITHOUT "DON'T KNOW"

Q18. Please rate your level of agreement with the following. Using a scale of 1 to 5, where 5 means "Strongly Agree" and 1 means "Strongly Disagree." (without "don't know")

(N=615)

	Strongly Agree	Agree	Neutral	Disagree	Strongly Disagree
Q18a. Television is my primary form of information & entertainment	108 18.0%	185 30.8%	143 23.8%	92 15.3%	73 12.1%
Q18b. Internet is my primary form of information & entertainment	103 17.7%	216 37.0%	142 24.4%	78 13.4%	44 7.5%
Q18c. Some other medium is my primary form of information & entertainment	24 4.5%	119 22.4%	176 33.1%	129 24.3%	83 15.6%

Q19. Do you have access to the internet?

Q19. Do you have access to internet?	Number	Percent
Yes	564	91.7 %
No	43	7.0 %
Don't know	8	1.3 %
Total	615	100.0 %

WITHOUT "DON'T KNOW"

Q19. Do you have access to the internet? (without "don't know")

Q19. Do you have access to internet?	Number	Percent
Yes	564	92.9 %
No	43	7.1 %
Total	607	100.0 %

Q20. (If YES to Question 19) Are you involved in any group that primarily meets over the internet?

Q20. Are you involved in any group that primarily meets over the internet?	Number	Percent
Yes	93	16.5 %
No	461	81.7 %
Don't know	10	1.8 %
Total	564	100.0 %

WITHOUT "DON'T KNOW"

Q20. (If YES to Question 19) Are you involved in any group that primarily meets over the internet? (without "don't know")

Q20. Are you involved in any group that primarily meets over the internet?	Number	Percent
Yes	93	16.8 %
No	461	83.2 %
Total	554	100.0 %

Q21. (If YES to Question 19) How do you typically access the internet?

Q21. How do you typically access internet?	Number	Percent
Home desktop/laptop computer	396	76.7 %
Work desktop/laptop computer	161	31.2 %
Tablet with data plan	134	26.0 %
Mobile phone with data plan	340	65.9 %
Public computer (i.e. library)	32	6.2 %
Total	1063	

Q22. (If YES to Question 19) Do any of the clubs or organizations you belong to have information available on the web (i.e. a bulletin board, discussion board, or other online forum)?

Q22. Do any clubs or organizations you belong to have information available on the web?	Number	Percent
Yes	325	57.6 %
No	127	22.5 %
Don't know	112	19.9 %
Total	564	100.0 %

WITHOUT "DON'T KNOW"

Q22. (If YES to Question 19) Do any of the clubs or organizations you belong to have information available on the web (i.e. a bulletin board, discussion board, or other online forum)? (without "don't know")

Q22. Do any clubs or organizations you belong to have information available on the web?	Number	Percent
Yes	325	71.9 %
No	127	28.1 %
Total	452	100.0 %

Q23. (If YES to Question 19) On average, how many hours per week do you spend online, excluding any work-related activities?

Q23. How many hours per week do you spend online excluding any work related activities?	Number	Percent
5 or less	160	29.4 %
6 to 10	159	29.2 %
11 to 15	54	9.9 %
16 to 20	61	11.2 %
21 to 30	51	9.4 %
31 to 40	21	3.9 %
41 to 50	16	2.9 %
51+	23	4.2 %
Total	545	100.0 %

Q24. (If YES to Question 19) How many times in the past 12 months have you accessed City or County information online?

Q24. How many times have you accessed City or County information online in past 12 months?	Number	Percent
More than once per week	36	6.4 %
Once a week	45	8.0 %
Twice a month	49	8.7 %
Once a month	51	9.0 %
5-9 times	56	9.9 %
2-4 times	49	8.7 %
A few times	115	20.4 %
Once	38	6.7 %
Never	125	22.2 %
Total	564	100.0 %

Q25. Thinking about someone like you six months from now, will it be easier or harder to find a job in Cumberland County?

Q25. Will it be easier or harder to find a job in Cumberland County thinking about someone like you six months from now?	Number	Percent
Easier to find a job	57	9.3 %
Harder to find a job	237	38.5 %
About the same	206	33.5 %
Don't know//refused	115	18.7 %
Total	615	100.0 %

WITHOUT "DON'T KNOW/REFUSED"

Q25. Thinking about someone like you six months from now, will it be easier or harder to find a job in Cumberland County? (without "don't know/refused")

Q25. Will it be easier or harder to find a job in Cumberland County thinking about someone like you six months from now?	Number	Percent
Easier to find a job	57	11.4 %
Harder to find a job	237	47.4 %
About the same	206	41.2 %
Total	500	100.0 %

Q26. Thinking about six months from now, my income will be:

Q26. What do you think your income will be six months from now?	Number	Percent
Higher	150	24.4 %
Lower	35	5.7 %
About the same	320	52.0 %
Don't know/refused	110	17.9 %
Total	615	100.0 %

WITHOUT "DON'T KNOW/REFUSED"

Q26. Thinking about six months from now, my income will be: (without "don't know/refused")

Q26. What do you think your income will be six months from now?	Number	Percent
Higher	150	29.7 %
Lower	35	6.9 %
About the same	320	63.4 %
Total	505	100.0 %

Q27. PERCEPTIONS OF CUMBERLAND COUNTY AND ITS MUNICIPALITIES: Using a scale of 1 to 5, where 5 means "EXCELLENT" and 1 means "POOR."

(N=615)

	Excellent	Very good	Good	Fair	Poor	Don't know
Q27a. Availability of affordable housing in Cumberland County & its municipalities	24 3.9%	56 9.1%	147 23.9%	152 24.8%	99 16.1%	136 22.1%
Q27b. Streets/roads	6 1.0%	52 8.5%	191 31.1%	241 39.3%	110 17.9%	14 2.3%
Q27c. Parks & recreation	22 3.6%	108 17.6%	233 37.9%	154 25.1%	52 8.5%	45 7.3%
Q27d. Trash removal	46 7.5%	155 25.2%	226 36.8%	109 17.8%	39 6.4%	39 6.4%
Q27e. Law enforcement	63 10.3%	150 24.4%	211 34.4%	108 17.6%	37 6.0%	45 7.3%
Q27f. Public school system	16 2.6%	94 15.3%	167 27.2%	156 25.4%	86 14.0%	95 15.5%
Q27g. Social services	24 3.9%	45 7.3%	154 25.1%	142 23.1%	77 12.5%	172 28.0%
Q27h. Public/mental health	14 2.3%	44 7.2%	115 18.7%	121 19.7%	118 19.2%	202 32.9%
Q27i. Court system	16 2.6%	54 8.8%	153 24.9%	125 20.4%	83 13.5%	183 29.8%
Q27j. Overall quality of life in Cumberland County & its municipalities	17 2.8%	75 12.2%	254 41.4%	174 28.3%	61 9.9%	33 5.4%

WITHOUT "DON'T KNOW"

Q27. PERCEPTIONS OF CUMBERLAND COUNTY AND ITS MUNICIPALITIES: Using a scale of 1 to 5, where 5 means "EXCELLENT" and 1 means "POOR." (without "don't know")

(N=615)

	Excellent	Very good	Good	Fair	Poor
Q27a. Availability of affordable housing in Cumberland County & its municipalities	24 5.0%	56 11.7%	147 30.8%	152 31.8%	99 20.7%
Q27b. Streets/roads	6 1.0%	52 8.7%	191 31.8%	241 40.2%	110 18.3%
Q27c. Parks & recreation	22 3.9%	108 19.0%	233 40.9%	154 27.1%	52 9.1%
Q27d. Trash removal	46 8.0%	155 27.0%	226 39.3%	109 19.0%	39 6.8%
Q27e. Law enforcement	63 11.1%	150 26.4%	211 37.1%	108 19.0%	37 6.5%
Q27f. Public school system	16 3.1%	94 18.1%	167 32.2%	156 30.1%	86 16.6%
Q27g. Social services	24 5.4%	45 10.2%	154 34.8%	142 32.1%	77 17.4%
Q27h. Public/mental health	14 3.4%	44 10.7%	115 27.9%	121 29.4%	118 28.6%
Q27i. Court system	16 3.7%	54 12.5%	153 35.5%	125 29.0%	83 19.3%
Q27j. Overall quality of life in Cumberland County & its municipalities	17 2.9%	75 12.9%	254 43.7%	174 29.9%	61 10.5%

Q28. When thinking about Cumberland County and its municipalities as a place to live and the opportunities and amenities it provides. How would you rate Cumberland County and its municipalities for the following groups of people? Using a scale of 1 to 5, where 5 means "Excellent and 1 means "poor."

(N=615)

	Excellent	Very good	Good	Fair	Poor	Don't know
Q28a. Immigrants from other countries	22 3.6%	69 11.2%	157 25.6%	136 22.1%	52 8.5%	178 29.0%
Q28b. Families with children under 18	13 2.1%	89 14.5%	219 35.7%	142 23.1%	64 10.4%	87 14.2%
Q28c. Middle-aged adults	9 1.5%	85 13.8%	224 36.5%	159 25.9%	64 10.4%	73 11.9%
Q28d. Senior citizens	14 2.3%	69 11.2%	196 31.9%	144 23.5%	91 14.8%	100 16.3%
Q28e. Young adults entering workforce	8 1.3%	43 7.0%	134 21.8%	206 33.6%	133 21.7%	90 14.7%
Q28f. Persons with disabilities	8 1.3%	45 7.3%	158 25.7%	153 24.9%	89 14.5%	161 26.2%
Q28g. Residents from other parts of US	14 2.3%	78 12.7%	184 30.0%	140 22.8%	38 6.2%	160 26.1%
Q28h. LGBTQ	9 1.5%	36 5.9%	96 15.6%	111 18.1%	65 10.6%	297 48.4%
Q28i. Single adults	6 1.0%	54 8.8%	176 28.7%	148 24.1%	84 13.7%	146 23.8%
Q28j. Racial & ethnic minorities	20 3.3%	58 9.4%	199 32.4%	146 23.8%	73 11.9%	118 19.2%
Q28k. Military affiliated	145 23.6%	160 26.1%	169 27.5%	67 10.9%	22 3.6%	51 8.3%

WITHOUT "DON'T KNOW"

Q28. When thinking about Cumberland County and its municipalities as a place to live and the opportunities and amenities it provides. How would you rate Cumberland County and its municipalities for the following groups of people? Using a scale of 1 to 5, where 5 means "Excellent and 1 means "poor." (without "don't know")

(N=615)

	Excellent	Very good	Good	Fair	Poor
Q28a. Immigrants from other countries	22 5.0%	69 15.8%	157 36.0%	136 31.2%	52 11.9%
Q28b. Families with children under 18	13 2.5%	89 16.9%	219 41.6%	142 26.9%	64 12.1%
Q28c. Middle-aged adults	9 1.7%	85 15.7%	224 41.4%	159 29.4%	64 11.8%
Q28d. Senior citizens	14 2.7%	69 13.4%	196 38.1%	144 28.0%	91 17.7%
Q28e. Young adults entering workforce	8 1.5%	43 8.2%	134 25.6%	206 39.3%	133 25.4%
Q28f. Persons with disabilities	8 1.8%	45 9.9%	158 34.9%	153 33.8%	89 19.6%
Q28g. Residents from other parts of US	14 3.1%	78 17.2%	184 40.5%	140 30.8%	38 8.4%
Q28h. LGBTQ	9 2.8%	36 11.4%	96 30.3%	111 35.0%	65 20.5%
Q28i. Single adults	6 1.3%	54 11.5%	176 37.6%	148 31.6%	84 17.9%
Q28j. Racial & ethnic minorities	20 4.0%	58 11.7%	199 40.1%	146 29.4%	73 14.7%
Q28k. Military affiliated	145 25.8%	160 28.4%	169 30.0%	67 11.9%	22 3.9%

Q29. TRUST: Please indicate HOW MUCH you trust the following groups of people. Using a scale of 1 to 5, where 5 means "Trust them a lot" and 1 means "Don't trust them at all."

	Trust them a lot	Trust them some	Neutral	Trust them only a little	Don't trust them at all	Don't know
American Indian or Alaskan Native people	28.9%	22.8%	42.1%	0.9%	2.6%	2.6%
Asian people	28.1%	25.4%	37.7%	1.8%	2.6%	4.4%
Black or African American people	28.1%	28.1%	33.3%	2.6%	4.4%	3.5%
Hispanic or Latino people	27.2%	26.3%	38.6%	2.6%	2.6%	2.6%
Middle Eastern/Arab people	20.2%	21.9%	35.1%	10.5%	8.8%	3.5%
Native Hawaiian or other Pacific Island people	32.5%	23.7%	36.8%	0.9%	2.6%	3.5%
White or Caucasian people	20.2%	28.9%	36.0%	5.3%	7.9%	1.8%
Heterosexual	25.4%	24.6%	39.5%	2.6%	5.3%	2.6%
LGBTQ people	24.6%	19.3%	34.2%	3.5%	9.6%	8.8%

WITHOUT “DON’T KNOW”

Q29. TRUST: Please indicate HOW MUCH you trust the following groups of people. Using a scale of 1 to 5, where 5 means "Trust them a lot" and 1 means "Don't trust them at all." (without "don't know")

	Trust them a lot	Trust them some	Neutral	Trust them only a little	Don't trust them at all
American Indian or Alaskan Native people	29.7%	23.4%	43.2%	0.9%	2.7%
Asian people	29.4%	26.6%	39.4%	1.8%	2.8%
Black or African American people	29.1%	29.1%	34.5%	2.7%	4.5%
Hispanic or Latino people	27.9%	27.0%	39.6%	2.7%	2.7%
Middle Eastern/Arab people	20.9%	22.7%	36.4%	10.9%	9.1%
Native Hawaiian or other Pacific Island people	33.6%	24.5%	38.2%	0.9%	2.7%
White or Caucasian people	20.5%	29.5%	36.6%	5.4%	8.0%
Heterosexual	26.1%	25.2%	40.5%	2.7%	5.4%
LGBTQ people	26.9%	21.2%	37.5%	3.8%	10.6%

Q30. Using a scale of 1 to 5, where 5 means "Strongly Agree" and 1 means "Strongly Disagree," please indicate how much you agree or disagree with the following statements.

(N=615)

	Strongly Agree	Agree	Neutral	Disagree	Strongly Disagree	Don't Know
Q30a. The same amount of respect as me	67 10.9%	155 25.2%	131 21.3%	141 23.0%	42 6.8%	78 12.7%
Q30b. The same general opportunities as me	56 9.1%	166 27.0%	121 19.7%	139 22.6%	48 7.8%	84 13.7%
Q30c. The same job opportunities as me	57 9.3%	159 25.9%	129 21.0%	131 21.3%	58 9.4%	80 13.0%
Q30d. The same educational opportunities as me	78 12.7%	200 32.6%	127 20.7%	85 13.8%	41 6.7%	83 13.5%
Q30e. The same health care options as me	59 9.6%	179 29.2%	135 22.0%	102 16.6%	45 7.3%	94 15.3%
Q30f. The same treatment in the justice system as me	59 9.6%	138 22.5%	121 19.7%	120 19.5%	78 12.7%	98 16.0%

WITHOUT "DON'T KNOW"

Q30. Using a scale of 1 to 5, where 5 means "Strongly Agree" and 1 means "Strongly Disagree," please indicate how much you agree or disagree with the following statements. (without "don't know")

(N=615)

	Strongly Agree	Agree	Neutral	Disagree	Strongly Disagree
Q30a. The same amount of respect as me	67 12.5%	155 28.9%	131 24.4%	141 26.3%	42 7.8%
Q30b. The same general opportunities as me	56 10.6%	166 31.3%	121 22.8%	139 26.2%	48 9.1%
Q30c. The same job opportunities as me	57 10.7%	159 29.8%	129 24.2%	131 24.5%	58 10.9%
Q30d. The same educational opportunities as I do	78 14.7%	200 37.7%	127 23.9%	85 16.0%	41 7.7%
Q30e. The same health care options as me	59 11.3%	179 34.4%	135 26.0%	102 19.6%	45 8.7%
Q30f. The same treatment in the justice system as me	59 11.4%	138 26.7%	121 23.4%	120 23.3%	78 15.1%

Q31. Please indicate if you have a personal friend who is in any of the following categories.

Q31. Do you have a personal friend who is in any categories?	Percent
Owns a business	74.6 %
Blue collar worker	82.5 %
Welfare recipient (past or present)	68.4 %
Owns a vacation home	57.9 %
Is a different religious orientation	76.3 %
Is a community leader	50.9 %
Is LGBTQ	59.6 %
White collar worker	73.7 %
None	6.1 %

Q32. Do you have children in the Cumberland County School System?

Q32. Do you have children in Cumberland County School System?	Number	Percent
Yes	159	25.9 %
No	435	70.7 %
Don't know	21	3.4 %
Total	615	100.0 %

WITHOUT "DON'T KNOW"

Q32. Do you have children in the Cumberland County School System? (without "don't know")

Q32. Do you have children in Cumberland County School System?	Number	Percent
Yes	159	26.8 %
No	435	73.2 %
Total	594	100.0 %

Q33. Using a scale of 1 to 5, where 5 means "Strongly Agree" and 1 means "Strongly Disagree," please indicate how much you agree or disagree with the following statements regarding the Cumberland County School System.

(N=615)

	Strongly Agree	Agree	Neutral	Disagree	Strongly Disagree	Don't Know
Q33a. The school system promotes positive relations with students of diverse backgrounds	34 5.5%	165 26.8%	141 22.9%	65 10.6%	39 6.3%	171 27.8%
Q33b. All schools have the same resources	14 2.3%	38 6.2%	70 11.4%	176 28.6%	152 24.7%	165 26.8%

WITHOUT "DON'T KNOW"

Q33. Using a scale of 1 to 5, where 5 means "Strongly Agree" and 1 means "Strongly Disagree," please indicate how much you agree or disagree with the following statements regarding the Cumberland County School System. (without "don't know")

(N=615)

	Strongly Agree	Agree	Neutral	Disagree	Strongly Disagree
Q33a. The school system promotes positive relations with students of diverse backgrounds	34 7.7%	165 37.2%	141 31.8%	65 14.6%	39 8.8%
Q33b. All schools have the same resources	14 3.1%	38 8.4%	70 15.6%	176 39.1%	152 33.8%

Q34. How many years have you lived in Cumberland County?

Q34. How many years have you lived in Cumberland County?	Number	Percent
5 or less	112	19.0 %
6 to 10	81	13.7 %
11 to 15	38	6.4 %
16 to 20	63	10.7 %
21 to 30	115	19.5 %
31+	181	30.7 %
Total	590	100.0 %

Q35. What is your working status?

Q35. What is your current employment status?	Number	Percent
Working full time	326	53.0 %
Temporarily laid off	3	0.5 %
Unemployed, but looking for work	35	5.7 %
Unemployed, but not looking for work	12	2.0 %
Permanently disabled	61	9.9 %
Homemaker	27	4.4 %
Student	17	2.8 %
Retired	119	19.3 %
Don't know/refused	15	2.4 %
Total	615	100.0 %

WITHOUT "DON'T KNOW/REFUSED"

Q35. What is your working status? (without "don't know/refused")

Q35. What is your current employment status?	Number	Percent
Working full time	326	54.3 %
Temporarily laid off	3	0.5 %
Unemployed, but looking for work	35	5.8 %
Unemployed, but not looking for work	12	2.0 %
Permanently disabled	61	10.2 %
Homemaker	27	4.5 %
Student	17	2.8 %
Retired	119	19.8 %
Total	600	100.0 %

Q36. What is the highest level of education you have completed?

Q36. What is the highest level of education you have completed?	Number	Percent
Less than high school (Grade 11 or less)	22	3.6 %
High school diploma (including GED)	84	13.7 %
Some college	147	23.9 %
Associate degree (2 years) or specialized technical training	120	19.5 %
Bachelor's degree	93	15.1 %
Some graduate school	32	5.2 %
Graduate or professional degree	106	17.2 %
Don't know/refused	11	1.8 %
Total	615	100.0 %

WITHOUT "DON'T KNOW/REFUSED"

Q36. What is the highest level of education you have completed? (without "don't know/refused")

Q36. What is the highest level of education you have Completed?	Number	Percent
Less than high school (Grade 11 or less)	22	3.6 %
High school diploma (including GED)	84	13.9 %
Some college	147	24.3 %
Associate degree (2 years) or specialized technical training	120	19.9 %
Bachelor's degree	93	15.4 %
Some graduate school	32	5.3 %
Graduate or professional degree	106	17.5 %
Total	604	100.0 %

Q37. What is your race/ethnicity?

<u>Q37. Your race/ethnicity</u>	<u>Number</u>	<u>Percent</u>
White (not Hispanic or Latino)	273	45.7 %
Black or African American	240	40.1 %
American Indian or Alaskan Native	16	2.7 %
Asian	15	2.5 %
Native Hawaiian or Pacific Islander	7	1.2 %
Hispanic or Latino	66	11.0 %
Middle Eastern/Arab American	2	0.3 %
Other	13	2.2 %
Total	632	

Q37. Other

<u>Q37. Other</u>	<u>Number</u>	<u>Percent</u>
Mixed	6	54.5 %
Polish	1	9.1 %
French Canadian/Canadian Indian	1	9.1 %
Armenina Jew	1	9.1 %
European decent	1	9.1 %
Bahamian	1	9.1 %
Total	11	100.0 %

Q38. What is your national origin?

<u>Q38. What is your national origin?</u>	<u>Number</u>	<u>Percent</u>
United States of America	537	87.3 %
Canada	2	0.3 %
An African nation	10	1.6 %
Mexico	2	0.3 %
Puerto Rico	16	2.6 %
Cuba	2	0.3 %
China	3	0.5 %
Korea	1	0.2 %
Japan	1	0.2 %
Philippines	2	0.3 %
India	1	0.2 %
Vietnam	1	0.2 %
Cambodia	1	0.2 %
Other	17	2.8 %
Not provided	19	3.1 %
Total	615	100.0 %

WITHOUT "NOT PROVIDED"

Q38. What is your national origin? (without "not provided")

<u>Q38. What is your national origin?</u>	<u>Number</u>	<u>Percent</u>
United States of America	537	90.1 %
Canada	2	0.3 %
An African nation	10	1.7 %
Mexico	2	0.3 %
Puerto Rico	16	2.7 %
Cuba	2	0.3 %
China	3	0.5 %
Korea	1	0.2 %
Japan	1	0.2 %
Philippines	2	0.3 %
India	1	0.2 %
Vietnam	1	0.2 %
Cambodia	1	0.2 %
Other	17	2.9 %
Total	596	100.0 %

Q38. Other

Q38. Other	Number	Percent
German	4	23.5 %
Dominican Republic	2	11.8 %
Indonesian	1	5.9 %
Armenia	1	5.9 %
Argentina	1	5.9 %
Islander	1	5.9 %
Pakistan	1	5.9 %
Wales	1	5.9 %
Australian	1	5.9 %
The Carribean	1	5.9 %
Panama	1	5.9 %
Barbados	1	5.9 %
Greek	1	5.9 %
Total	17	100.0 %

Q39. Are you a citizen of the United States?

Q39. Are you a citizen of the United States?	Number	Percent
Yes	593	96.4 %
No	6	1.0 %
Don't know	16	2.6 %
Total	615	100.0 %

WITHOUT "DON'T KNOW"

Q39. Are you a citizen of the United States? (without "don't know")

Q39. Are you a citizen of the United States?	Number	Percent
Yes	593	99.0 %
No	6	1.0 %
Total	599	100.0 %

Q40. How many different telephone numbers (including cell phones) does your household have, not counting those dedicated to a fax machine or computer?

Q40. How many different telephone numbers (including cell phones) does your household have?	Number	Percent
0	4	0.7 %
1	86	15.1 %
2	202	35.4 %
3	160	28.0 %
4	69	12.1 %
5	32	5.6 %
6	8	1.4 %
7	3	0.5 %
8	1	0.2 %
9	4	0.7 %
10	1	0.2 %
11	1	0.2 %
Total	571	100.0 %

Q41. What is your total annual household income from 2016?

Q41. What was your 2016 total annual household income?	Number	Percent
\$20K or less	109	17.7 %
\$20K-\$29,999	58	9.4 %
\$30K-\$49,999	90	14.6 %
\$50K-\$74,999	117	19.0 %
\$75K-\$99,999	74	12.0 %
\$100K-\$124,999	52	8.5 %
\$125K-\$149,999	20	3.3 %
\$150K+	37	6.0 %
Don't know/refused	58	9.4 %
Total	615	100.0 %

WITHOUT "DON'T KNOW/REFUSED"

Q41. What is your total annual household income from 2016? (without "don't know/refused")

Q41. What was your 2016 total annual household income?	Number	Percent
\$20K or less	109	19.6 %
\$20K-\$29,999	58	10.4 %
\$30K-\$49,999	90	16.2 %
\$50K-\$74,999	117	21.0 %
\$75K-\$99,999	74	13.3 %
\$100K-\$124,999	52	9.3 %
\$125K-\$149,999	20	3.6 %
\$150K+	37	6.6 %
Total	557	100.0 %

Q42. Are you currently:

Q42. Are you currently	Number	Percent
Married	342	56.9 %
Separated	14	2.3 %
Divorced	100	16.6 %
Widowed	50	8.3 %
Living with a partner	24	4.0 %
Never been married	78	13.0 %
Total	608	

Q43. Select any that apply to you:

Q43. Select any that apply to you	Number	Percent
Lesbian	14	2.3 %
Gay	5	0.8 %
Bi-sexual	19	3.1 %
Transgender	1	0.2 %
Queer	1	0.2 %
None	579	94.1 %
Total	619	

WITHOUT "NONE"

Q43. Select any that apply to you: (without "none")

Q43. Select any that apply to you	Number	Percent
Lesbian	14	38.9 %
Gay	5	13.9 %
Bi-sexual	19	52.8 %
Transgender	1	2.8 %
Queer	1	2.8 %
Total	40	

Q44. Do you own or rent your current residence?

<u>Q44. Do you own or rent your current residence?</u>	<u>Number</u>	<u>Percent</u>
Own	375	61.0 %
Rent	226	36.7 %
Don't know	14	2.3 %
Total	615	100.0 %

WITHOUT "DON'T KNOW"

Q44. Do you own or rent your current residence? (without "don't know")

<u>Q44. Do you own or rent your current residence?</u>	<u>Number</u>	<u>Percent</u>
Own	375	62.4 %
Rent	226	37.6 %
Total	601	100.0 %

Q45. Including yourself, how many people in your household are:

	<u>Mean</u>	<u>Sum</u>
number	2.6	1601
Under age 5	0.2	99
Ages 5-9	0.2	97
Ages 10-14	0.2	99
Ages 15-19	0.2	100
Ages 20-24	0.2	110
Ages 25-34	0.4	231
Ages 35-44	0.4	219
Ages 45-54	0.4	234
Ages 55-64	0.4	220
Ages 65-74	0.2	131
Ages 75+	0.1	61

Q46. What is your age?

Q46. Your age	Number	Percent
18-34	149	24.2 %
35-44	120	19.5 %
45-54	123	20.0 %
55-64	116	18.9 %
65+	97	15.8 %
Not provided	10	1.6 %
Total	615	100.0 %

WITHOUT "NOT PROVIDED"

Q46. What is your age? (without "not provided")

Q46. Your age	Number	Percent
18-34	149	24.6 %
35-44	120	19.8 %
45-54	123	20.3 %
55-64	116	19.2 %
65+	97	16.0 %
Total	605	100.0 %

Q47. What is your gender?

Q47. Your gender	Number	Percent
Male	296	48.1 %
Female	316	51.4 %
Other	3	0.5 %
Total	615	100.0 %

Q47. Other

--- No Response ---

Q48. What best describes your military affiliation?

Q48. What is your current military affiliation?	Number	Percent
Active Duty	21	3.4 %
National Guard	5	0.8 %
Reserves	6	1.0 %
Retired	89	14.5 %
Veteran	91	14.8 %
Spouse	65	10.6 %
Dependent	28	4.6 %
None	310	50.4 %
Total	615	100.0 %

WITHOUT "NONE"

Q48. What best describes your military affiliation? (without "none")

Q48. What is your current military affiliation?	Number	Percent
Active Duty	21	6.9 %
National Guard	5	1.6 %
Reserves	6	2.0 %
Retired	89	29.2 %
Veteran	91	29.8 %
Spouse	65	21.3 %
Dependent	28	9.2 %
Total	305	100.0 %

Q49. Are you a business owner?

Q49. Are you a business owner?	Number	Percent
Yes	72	11.7 %
No	543	88.3 %
Total	615	100.0 %

Section 4:

Survey Instrument



Greater Fayetteville United

P.O. Box 9592
Fayetteville, NC 28311
Ph: 910-849-2991

May 2017

Dear Fayetteville or Cumberland County Citizen,

Your input on the enclosed survey is extremely important. Greater Fayetteville United (GFU) appreciates the opportunity to serve you and wants to learn how to serve you better. The purpose of the survey is to measure trust and relationships among citizens in our area with the goal of improving community engagement. This will ultimately improve the quality of life of all citizens. To ensure that Fayetteville-Cumberland County has the level of trust and relationships needed to foster community engagement, **we need to know what YOU think. The survey results will be shared with the Greater Fayetteville later in the fall.**

We appreciate your time and value your opinion. This survey only takes approximately 15 minutes to complete and every question is important. This is your community and the time you invest in this survey will influence many decisions that will be made about our future.

Please return your survey as soon as possible. Your responses will remain confidential. Please return your survey in the enclosed postage-paid envelope addressed to ETC Institute, 725 W. Frontier Circle, Olathe, KS 66061.

As the President of Greater Fayetteville United, we look forward to hearing your opinions and sincerely appreciate your feedback.

If you have any questions, please contact GFU at (910) 849-2991. For additional information, visit our website at www.greaterfayunited.org. Thank you for allowing us to serve you.

Sincerely,

Darl H. Champion, Ed.D.
President
Greater Fayetteville United

Social Capital Community Survey



Greater Fayetteville United, in partnership with the City of Fayetteville and Cumberland Community Foundation thank you for agreeing to participate in this important survey. Your input will be used by community leaders to mobilize organizations and people within the community to improve the quality of life for residents of the Fayetteville-Cumberland County area. If you prefer to complete the survey on-line, please go to www.GFUSurvey.org. If you have questions, please contact Rebecca Rogers Carter at (910) 849-2991 or rrcarter@ci.fay.nc.us

1. **PERCEPTIONS OF TRUST:** Please indicate how much you trust the following groups of people. Using a scale of 1 to 5, where 5 means "Trust them a lot" and 1 means "Don't trust them at all", please rate the following:

How much do you trust....	Trust them a lot	Trust them some	Neutral	Trust them only a little	Don't trust them at all	Don't Know
1. Other people in general	5	4	3	2	1	9
2. People in your neighborhood	5	4	3	2	1	9
3. Law enforcement in your local community	5	4	3	2	1	9
4. People who work in the stores where you shop	5	4	3	2	1	9
5. City/town government officials	5	4	3	2	1	9
6. Cumberland County government officials	5	4	3	2	1	9
7. State government officials	5	4	3	2	1	9
8. Federal government officials	5	4	3	2	1	9

2. **How interested are you in politics and national affairs?**

☐ (5) Very Interested
☐ (4) Somewhat Interested
☐ (3) Slightly Interested
☐ (2) Not Interested
☐ (1) Not at all Interested
☐ (9) Don't know

3. **Are you currently registered to vote?** ☐ (1) Yes ☐ (2) No

4. **TRUST IN GOVERNMENT:** Please indicate how much of the time you think you can trust the following. Using a scale of 1 to 4 where 4 means "Always" and 1 means "Never".

How much of the time can you trust...	Always	Most of the time	Sometimes	Never	Don't Know
1. Federal Government	4	3	2	1	9
2. State Government	4	3	2	1	9
3. County Government	4	3	2	1	9
4. City/Town Government	4	3	2	1	9

5. **Thinking POLITICALLY and SOCIALLY, how would you describe your personal political outlook?**

☐ (6) Very conservative
☐ (5) Moderately conservative
☐ (4) Middle-of-the-road
☐ (3) Moderately liberal
☐ (2) Very liberal
☐ (1) Other: _____
☐ (9) Don't know

6. About how many times in the past 12 months have you done each of the following? Using a scale of 1 to 9 where 9 means “More Than Once a Week” and 1 means “Never”.

Please rate how often you have done each of the following:		More Than Once/Week	Once a Week	Twice a Month	Once a Month	5-9 Times	2-4 Times	A Few Times	Once	Never	Don't Know
01.	Worked on a community project	9	8	7	6	5	4	3	2	1	9
02.	Donated blood	9	8	7	6	5	4	3	2	1	9
03.	Attended a public meeting or rally	9	8	7	6	5	4	3	2	1	9
04.	Attended a public meeting for City/Town affairs	9	8	7	6	5	4	3	2	1	9
05.	Attended a public meeting for school system affairs	9	8	7	6	5	4	3	2	1	9
06.	Attended a public recreational event	9	8	7	6	5	4	3	2	1	9
07.	Attended any club or organizational meeting	9	8	7	6	5	4	3	2	1	9
08.	Volunteered your time	9	8	7	6	5	4	3	2	1	9
09.	Had friends over to your home	9	8	7	6	5	4	3	2	1	9
10.	Had someone of a different race in your home	9	8	7	6	5	4	3	2	1	9
11.	Had someone from a different neighborhood in your home	9	8	7	6	5	4	3	2	1	9
12.	Had someone you consider to be a community leader in your home	9	8	7	6	5	4	3	2	1	9
13.	Been in the home of someone of a different race	9	8	7	6	5	4	3	2	1	9
14.	Been in the home of someone from a different neighborhood	9	8	7	6	5	4	3	2	1	9
15.	Been in the home of someone you consider to be a community leader	9	8	7	6	5	4	3	2	1	9
16.	Attended a religious service	9	8	7	6	5	4	3	2	1	9

7. In the past 12 months, have you served as an officer or served on a committee of any local club or other organization?

____ (1) Yes ____ (2) No ____ (9) Don't Know

8. Please indicate ALL of the organizations or causes you have volunteered to do work with in the past 12 months.

- | | |
|---|---|
| ____ (01) Place of worship | ____ (06) Arts or cultural organization |
| ____ (02) Fighting a particular disease | ____ (07) Neighborhood organization |
| ____ (03) School or youth program | ____ (08) Civic organization |
| ____ (04) Helping the poor | ____ (09) Other: _____ |
| ____ (05) Helping the elderly | ____ (10) None [Go to Question 9] |

8a. Please indicate how many people from the groups you volunteered with are in each of the following categories. Using a scale of 1 to 5 where 5 means “All” and 1 means “Only a Few”.

How many people from the groups you volunteered with are in each of the following categories?		All	Most	Some	Only a Few	None	Don't Know
01.	How many are the same gender as you	5	4	3	2	1	9
02.	How many are the same ethnicity as you	5	4	3	2	1	9
03.	How many are the same education level as you	5	4	3	2	1	9

9. Thinking of your own life, please indicate if any of the following obstacles or barriers make it difficult for you to be involved with your community.

- | | |
|--|--|
| <input type="checkbox"/> (01) An inflexible or demanding work schedule | <input type="checkbox"/> (06) Lack of information |
| <input type="checkbox"/> (02) Inadequate childcare | <input type="checkbox"/> (07) Feeling that you can't make a difference |
| <input type="checkbox"/> (03) Inadequate transportation | <input type="checkbox"/> (08) Inadequate healthcare |
| <input type="checkbox"/> (04) Feeling somewhat unwelcome | <input type="checkbox"/> (09) Inadequate resources/income |
| <input type="checkbox"/> (05) Concerns for safety | <input type="checkbox"/> (10) None |

10. Thinking back to the neighborhood you lived in when you were growing up, about what percent of the neighbors were of the same race/ethnicity as you?

- | | |
|---|--|
| <input type="checkbox"/> (01) Less than 10% | <input type="checkbox"/> (07) 61% - 70% |
| <input type="checkbox"/> (02) 11% - 20% | <input type="checkbox"/> (08) 71% - 80% |
| <input type="checkbox"/> (03) 21% - 30% | <input type="checkbox"/> (09) 81% - 90% |
| <input type="checkbox"/> (04) 31% - 40% | <input type="checkbox"/> (10) 91% - 100% |
| <input type="checkbox"/> (05) 41% - 50% | <input type="checkbox"/> (99) Don't know |
| <input type="checkbox"/> (06) 51% - 60% | |

11. Thinking about your neighborhood now, about what percent of your neighbors are of the same race/ethnicity as you?

- | | |
|---|--|
| <input type="checkbox"/> (01) Less than 10% | <input type="checkbox"/> (07) 61% - 70% |
| <input type="checkbox"/> (02) 11% - 20% | <input type="checkbox"/> (08) 71% - 80% |
| <input type="checkbox"/> (03) 21% - 30% | <input type="checkbox"/> (09) 81% - 90% |
| <input type="checkbox"/> (04) 31% - 40% | <input type="checkbox"/> (10) 91% - 100% |
| <input type="checkbox"/> (05) 41% - 50% | <input type="checkbox"/> (99) Don't know |
| <input type="checkbox"/> (06) 51% - 60% | |

12. What is your religious preference?

- | | |
|---|--|
| <input type="checkbox"/> (01) Buddhism | <input type="checkbox"/> (06) Protestantism |
| <input type="checkbox"/> (02) Catholicism | <input type="checkbox"/> (07) Other Christianity |
| <input type="checkbox"/> (03) Hinduism | <input type="checkbox"/> (08) Other: _____ |
| <input type="checkbox"/> (04) Judaism | <input type="checkbox"/> (09) None |
| <input type="checkbox"/> (05) Islam | <input type="checkbox"/> (99) Don't know/Refused |

13. Not including weddings and funerals, how often do you attend religious services?

- | | |
|--|---|
| <input type="checkbox"/> (1) More than once a week | <input type="checkbox"/> (5) A few times per year |
| <input type="checkbox"/> (2) Once a week | <input type="checkbox"/> (6) Less than a few times per year |
| <input type="checkbox"/> (3) Almost every week | <input type="checkbox"/> (7) Never |
| <input type="checkbox"/> (4) Once or twice a month | <input type="checkbox"/> (9) Don't know/refused |

14. People and families contribute money, property, or other assets for a wide variety of charitable purposes. During the past 12 months, approximately how much money did you and the other members of your household contribute to all secular causes and all religious causes, including your local religious congregation.

- | | |
|--|---|
| <input type="checkbox"/> (1) None | <input type="checkbox"/> (5) \$1000 to \$4999 |
| <input type="checkbox"/> (2) Less than \$100 | <input type="checkbox"/> (6) More than \$5000 |
| <input type="checkbox"/> (3) \$100 to \$499 | <input type="checkbox"/> (9) Don't know/Refused |
| <input type="checkbox"/> (4) \$500 to \$999 | |

15. Are you covered by any type of health insurance such as coverage through an employer, Medicaid, Medicare, Affordable Care Act (ACA)/Obamacare, or private health insurance?

- ☐ (1) Yes ☐ (02) No (Skip to Question 16) ☐ (9) Don't Know (Skip to Question 16)

15a. Is your coverage adequate?

- ☐ (1) Yes ☐ (2) No ☐ (9) Don't Know

16. How would you describe your overall state of health these days? Would you say it is:

____ (5) Excellent
 ____ (4) Very Good
 ____ (3) Good

____ (2) Fair
 ____ (1) Poor
 ____ (9) Don't know/Refused

17. All things considered, how happy would you say you are?

____ (5) Very Happy
 ____ (4) Happy
 ____ (3) Neutral

____ (2) Not Very Happy
 ____ (1) Not Happy at All
 ____ (9) Don't know/Refused

18. Please rate your level of agreement with the following. Using a scale of 1 to 5, where 5 means "Strongly Agree" and 1 means "Strongly Disagree".

Please rate the following:		Strongly Agree	Agree	Neutral	Disagree	Strongly Disagree	Don't Know
1.	Television is my primary form of information and entertainment	5	4	3	2	1	9
2.	Internet is my primary form of information and entertainment	5	4	3	2	1	9
3.	Some other medium is my primary form of information and entertainment	5	4	3	2	1	9

19. Do you have access to the internet?

____ (1) Yes (Answer Question 20-24) ____ (2) No (Skip to Question 25) ____ (9) Don't Know (Skip to Question 25)

20. Are you involved in any group that primarily meets over the Internet?

____ (1) Yes ____ (2) No ____ (9) Don't Know

21. How do you typically access the internet? (Check all that apply)

____ (1) Home desktop/laptop computer
 ____ (2) Work desktop/laptop computer
 ____ (3) Tablet with data plan
 ____ (4) Mobile phone with data plan
 ____ (5) Public computer (i.e. library)

22. Do any of the clubs or organizations you belong to have information available on the web (i.e. a bulletin board, discussion board, or other online forum)?

____ (1) Yes ____ (2) No ____ (9) Don't Know

23. On average, how many hours per week do you spend online, excluding any work-related activities?

_____ Hours

24. How many times in the past 12 months have you accessed City or County information online?

____ (1) More than once per week
 ____ (2) Once a week
 ____ (3) Twice a month
 ____ (4) Once a month
 ____ (5) 5-9 times

____ (6) 2-4 times
 ____ (7) A few times
 ____ (8) Once
 ____ (9) Never

25. Thinking about someone like you six months from now, will it be easier or harder to find a job in Cumberland County?

____ (1) Easier to find a job
 ____ (2) Harder to find a job
 ____ (3) About the same
 ____ (9) Don't know/refused

26. Thinking about six months from now, my income will be:

____ (1) Higher ____ (2) Lower ____ (3) About the same ____ (9) Don't Know/Refused

27. PERCEPTIONS OF CUMBERLAND COUNTY AND ITS MUNICIPALITIES: Using a scale of 1 to 5, where 5 means "EXCELLENT" and 1 means "POOR".

Please rate the following:		Excellent	Very Good	Good	Fair	Poor	Don't Know
01.	Availability of affordable housing in Cumberland County and its municipalities	5	4	3	2	1	9
02.	Streets/Roads	5	4	3	2	1	9
03.	Parks and Recreation	5	4	3	2	1	9
04.	Trash removal	5	4	3	2	1	9
05.	Law enforcement	5	4	3	2	1	9
06.	Public school system	5	4	3	2	1	9
07.	Social services	5	4	3	2	1	9
08.	Public/Mental health	5	4	3	2	1	9
09.	Court system	5	4	3	2	1	9
10.	Overall quality of life in Cumberland County and its municipalities	5	4	3	2	1	9

28. When thinking about Cumberland County and its municipalities as a place to live and the opportunities and amenities it provides. How would you rate Cumberland County and its municipalities for the following groups of people? Using a scale of 1 to 5, where 5 means "Excellent" and 1 means "poor".

How would you rate Cumberland County and its municipalities as a place to live for the following groups:		Excellent	Very Good	Good	Fair	Poor	Don't Know
01.	Immigrants from other countries	5	4	3	2	1	9
02.	Families with children under 18	5	4	3	2	1	9
03.	Middle-aged adults	5	4	3	2	1	9
04.	Senior citizens	5	4	3	2	1	9
05.	Young adults entering workforce	5	4	3	2	1	9
06.	Persons with disabilities	5	4	3	2	1	9
07.	Residents from other parts of the U.S.	5	4	3	2	1	9
08.	LGBTQ	5	4	3	2	1	9
09.	Single adults	5	4	3	2	1	9
10.	Racial and ethnic minorities	5	4	3	2	1	9
11.	Military affiliated	5	4	3	2	1	9

29. TRUST: Please indicate HOW MUCH you trust the following groups of people. Using a scale of 1 to 5, where 5 means "Trust them a lot" and 1 means "Don't trust them at all".

Please rate how much you trust the following:		Trust them a lot	Trust them some	Neutral	Trust them only a little	Don't trust them at all	Don't Know
1.	American Indian or Alaskan Native people	5	4	3	2	1	9
2.	Asian people	5	4	3	2	1	9
3.	Black or African American people	5	4	3	2	1	9
4.	Heterosexual people	5	4	3	2	1	9
5.	Hispanic or Latino people	5	4	3	2	1	9
6.	LGBTQ people	5	4	3	2	1	9
7.	Native Hawaiian or other Pacific Island people	5	4	3	2	1	9
8.	Middle Eastern/Arab people	5	4	3	2	1	9

30. Using a scale of 1 to 5, where 5 means “Strongly Agree” and 1 means “Strongly Disagree”, please indicate how much you agree or disagree with the following statements.

In general, members of different races, cultures, and ethnicities in Cumberland County receive:		Strongly Agree	Agree	Neutral	Disagree	Strongly Disagree	Don't Know
1.	The same amount of respect as me	5	4	3	2	1	9
2.	The same general opportunities as me	5	4	3	2	1	9
3.	The same job opportunities as me	5	4	3	2	1	9
4.	The same educational opportunities as me	5	4	3	2	1	9
5.	The same health care options as me	5	4	3	2	1	9
6.	The same treatment in the justice system as me	5	4	3	2	1	9

31. Please indicate if you have a personal friend who is in any of the following categories (Check all that apply).

- | | |
|--|---|
| <input type="checkbox"/> (1) Owns a business | <input type="checkbox"/> (5) Is a different religious orientation |
| <input type="checkbox"/> (2) Blue collar worker | <input type="checkbox"/> (6) Is a community leader |
| <input type="checkbox"/> (3) Welfare recipient (past or present) | <input type="checkbox"/> (7) Is LGBTQ |
| <input type="checkbox"/> (4) Owns a vacation home | <input type="checkbox"/> (8) None |

32. Do you have children in the Cumberland County School System?

☐ (1) Yes ☐ (2) No ☐ (9) Don't Know

33. Using a scale of 1 to 5, where 5 means “Strongly Agree” and 1 means “Strongly Disagree”, please indicate how much you agree or disagree with the following statements regarding the Cumberland County School System.

Please rate the following:		Strongly Agree	Agree	Neutral	Disagree	Strongly Disagree	Don't Know
1.	The school system promotes positive relations with students of diverse backgrounds	5	4	3	2	1	9
2.	All schools have the same resources	5	4	3	2	1	9

DEMOGRAPHICS:

34. How many years have you lived in Cumberland County? _____ Years

35. What is your working status?

- | | |
|---|---|
| <input type="checkbox"/> (1) Working full time | <input type="checkbox"/> (6) Homemaker |
| <input type="checkbox"/> (2) Temporarily laid off | <input type="checkbox"/> (7) Student |
| <input type="checkbox"/> (3) Unemployed, but looking for work | <input type="checkbox"/> (8) Retired |
| <input type="checkbox"/> (4) Unemployed, but not looking for work | <input type="checkbox"/> (9) Don't know/refused |
| <input type="checkbox"/> (5) Permanently disabled | |

36. What is the highest level of education you have completed?

- | | |
|--|--|
| <input type="checkbox"/> (1) Less than high school (Grade 11 or less) | <input type="checkbox"/> (5) Bachelor's degree |
| <input type="checkbox"/> (2) High school diploma (including GED) | <input type="checkbox"/> (6) Some graduate school |
| <input type="checkbox"/> (3) Some college | <input type="checkbox"/> (7) Graduate or professional degree |
| <input type="checkbox"/> (4) Associates degree (2 years) or specialized technical training | <input type="checkbox"/> (9) Don't know/refused |

37. What is your race/ethnicity? (Check all that apply)

- | | |
|--|--|
| <input type="checkbox"/> (1) White (not Hispanic or Latino) | <input type="checkbox"/> (5) Native Hawaiian or Pacific Islander |
| <input type="checkbox"/> (2) Black or African American | <input type="checkbox"/> (6) Hispanic or Latino |
| <input type="checkbox"/> (3) American Indian or Alaskan Native | <input type="checkbox"/> (7) Middle Eastern/Arab American |
| <input type="checkbox"/> (4) Asian | <input type="checkbox"/> (8) Other: _____ |

38. What is your national origin?

- ☐ (01) United States of America
☐ (02) Canada
☐ (03) An African Nation
☐ (04) Mexico
☐ (05) Puerto Rico
☐ (06) Cuba
☐ (07) China

- ☐ (08) Korea
☐ (09) Japan
☐ (10) Philippines
☐ (11) India
☐ (12) Vietnam
☐ (13) Cambodia
☐ (14) Other: _____

39. Are you a citizen of the United States? ☐ (1) Yes ☐ (2) No ☐ (9) Don't Know

40. How many different telephone numbers (including cell phones) does your household have, not counting those dedicated to a fax machine or computer? _____ Number of telephone numbers

41. What is your total annual household income from 2016?

- | | |
|--|--|
| <input type="checkbox"/> (1) \$20,000 or less | <input type="checkbox"/> (6) \$100,000 - \$124,999 |
| <input type="checkbox"/> (2) \$20,000 - \$29,999 | <input type="checkbox"/> (7) \$125,000 - \$149,999 |
| <input type="checkbox"/> (3) \$30,000 - \$49,999 | <input type="checkbox"/> (8) \$150,000 or more |
| <input type="checkbox"/> (4) \$50,000 - \$74,999 | <input type="checkbox"/> (9) Don't Know/Refused |
| <input type="checkbox"/> (5) \$75,000 - \$99,999 | |

42. Are you currently:

- | | |
|--|--|
| <input type="checkbox"/> (1) Married | <input type="checkbox"/> (4) Widowed |
| <input type="checkbox"/> (2) Separated | <input type="checkbox"/> (5) Living with a partner |
| <input type="checkbox"/> (3) Divorced | <input type="checkbox"/> (6) Never been married |

43. Select any that apply to you:

- | | |
|--|--|
| <input type="checkbox"/> (1) Lesbian | <input type="checkbox"/> (4) Transgender |
| <input type="checkbox"/> (2) Gay | <input type="checkbox"/> (5) Queer |
| <input type="checkbox"/> (3) Bi-sexual | <input type="checkbox"/> (6) None |

44. Do you own or rent your current residence? ☐ (01) Own ☐ (02) Rent ☐ (9) Don't Know

45. Including yourself, how many people in your household are:

- | | | |
|---|--|--|
| <input type="checkbox"/> (01) Under age 5 | <input type="checkbox"/> (05) Ages 20-24 | <input type="checkbox"/> (09) Ages 55-64 |
| <input type="checkbox"/> (02) Ages 5-9 | <input type="checkbox"/> (06) Ages 25-34 | <input type="checkbox"/> (10) Ages 65-74 |
| <input type="checkbox"/> (03) Ages 10-14 | <input type="checkbox"/> (07) Ages 35-44 | <input type="checkbox"/> (11) Ages 75+ |
| <input type="checkbox"/> (04) Ages 15-19 | <input type="checkbox"/> (08) Ages 45-54 | |

46. What is your age? _____ Years

47. What is your gender? ☐ (1) Male ☐ (2) Female ☐ (3) Other: _____

48. What best describes your military affiliation?

- | | | |
|---|--------------------------------------|--|
| <input type="checkbox"/> (1) Active Duty | <input type="checkbox"/> (4) Retired | <input type="checkbox"/> (7) Dependent |
| <input type="checkbox"/> (2) National Guard | <input type="checkbox"/> (5) Veteran | <input type="checkbox"/> (8) None |
| <input type="checkbox"/> (3) Reserves | <input type="checkbox"/> (6) Spouse | |

49. Are you a business owner? ☐ (1) Yes ☐ (2) No

Thank you for your time!

Please return your completed survey in the enclosed postage-paid envelope addressed to:
ETC Institute 725 W. Frontier Circle Olathe, KS 66061

Your responses will remain completely confidential. The information printed to the right will ONLY be used to help identify which areas of the City are having problems with City services. If your address is not correct, please provide the correct information. Thank you!