



Street Sweeping

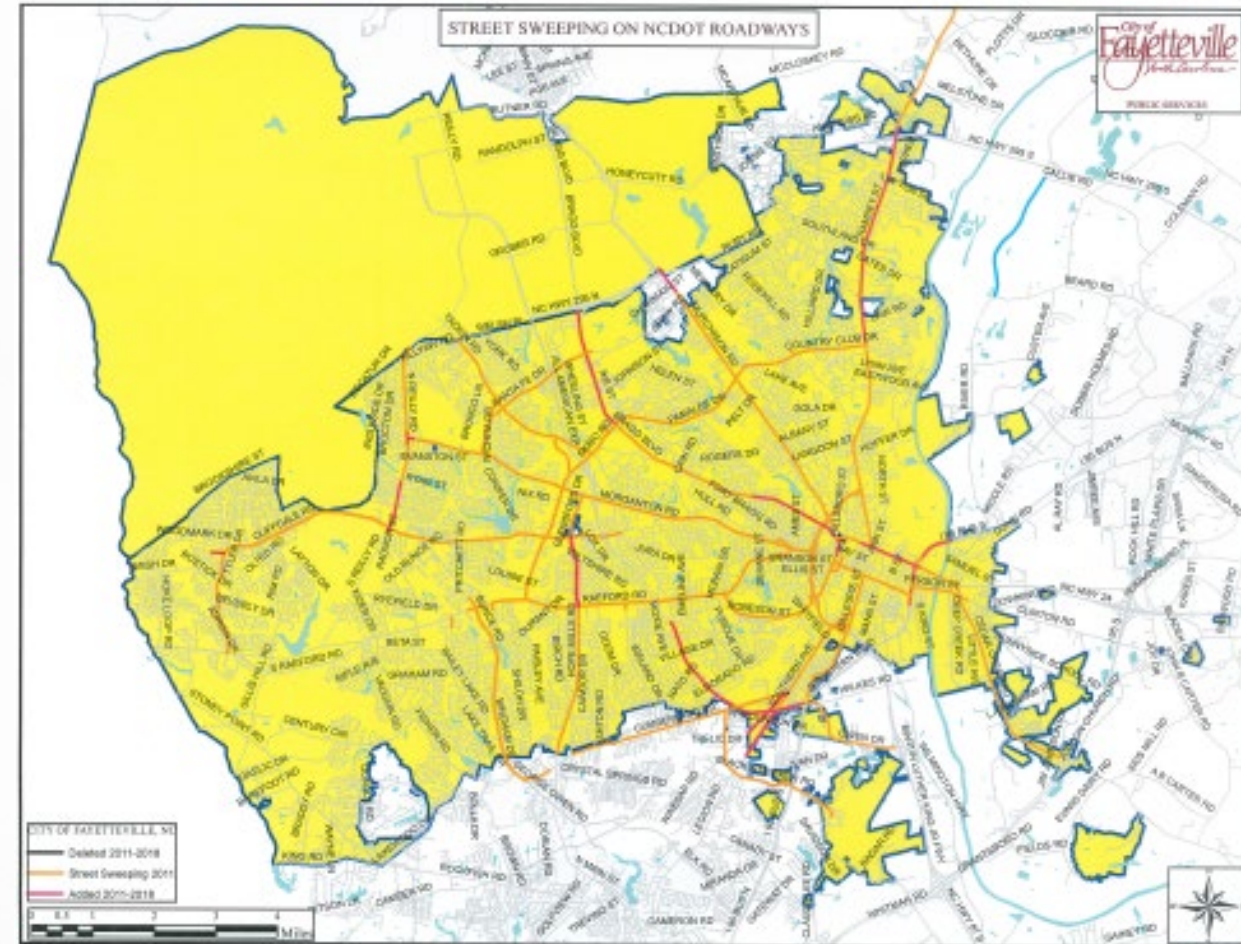
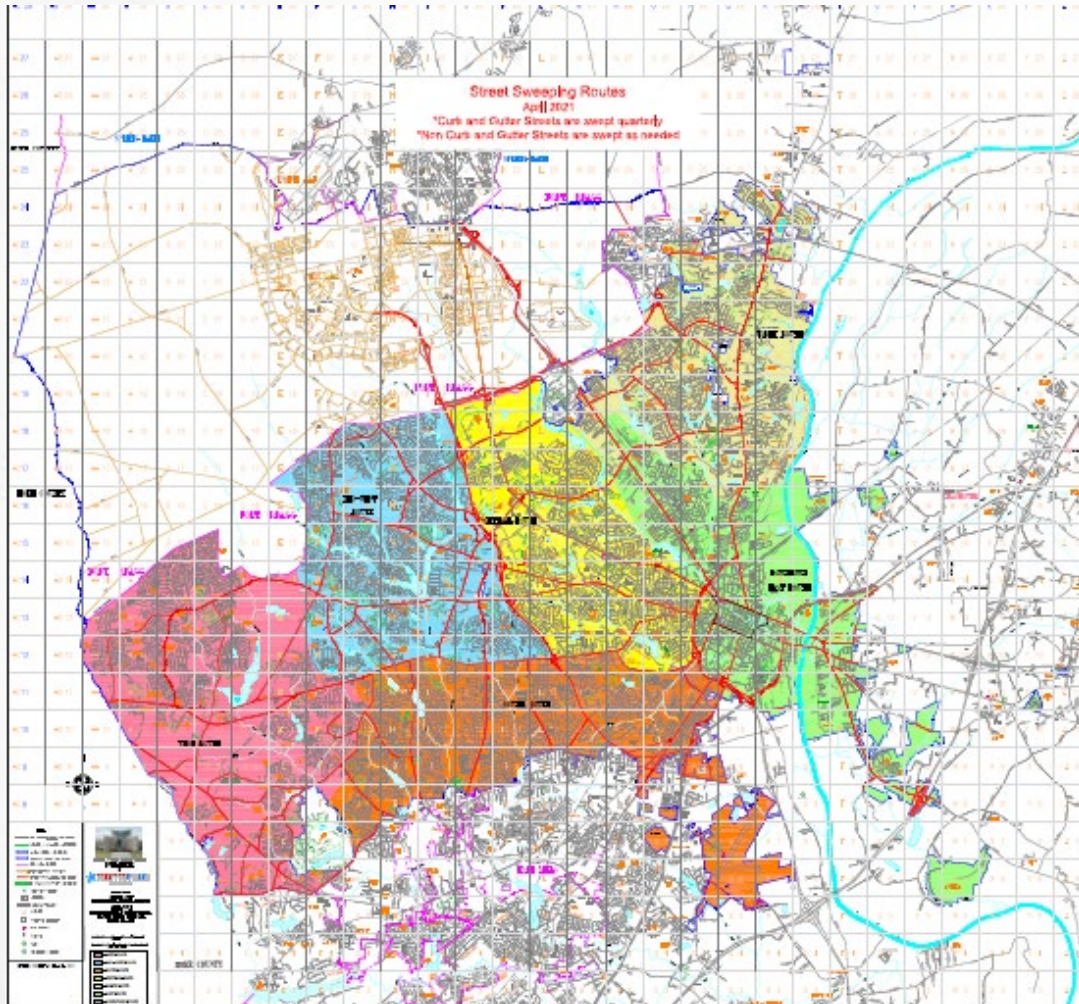
June 7, 2021 work session



- 11 Total Sweepers
 - 9 Regenerative Air (most ops)
 - 2 Mechanical (heavier material)
 - Spare/out of service equipment
- 8 FTE's
 - 6 City Zones
 - NCDOT Routes – 2 sweepers



6 City Zones – 6 sweepers
Quarterly Cycle



NCDOT roads – 2 sweepers
Quarterly Minimum – 6-8 Typical
Reimbursed \$126,000/year

Pre – Sweeping Operations

- Pre trip (20 Minutes)

- Compartment checks (vehicle engine, sweeper engine if applicable, fluids, belts)

- Visual inspection (tires, brooms, lights, missing components)



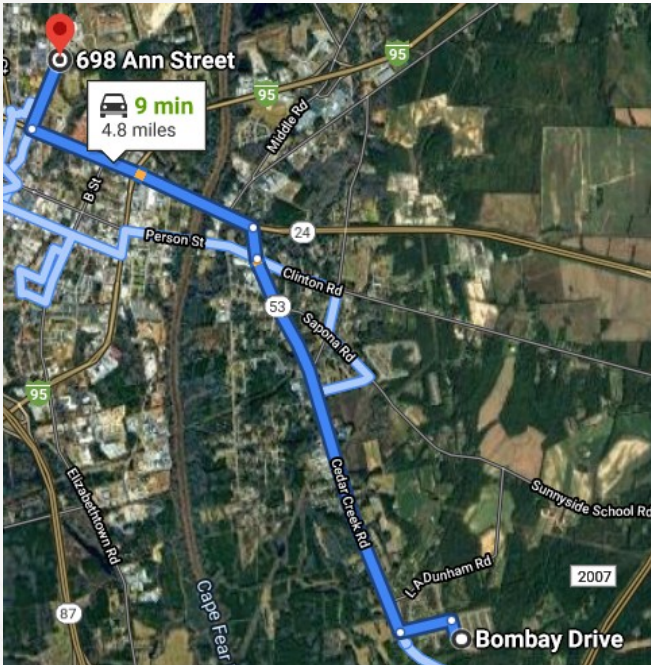
- Control components (ensure all control switches are operational)

Sweeping Operations

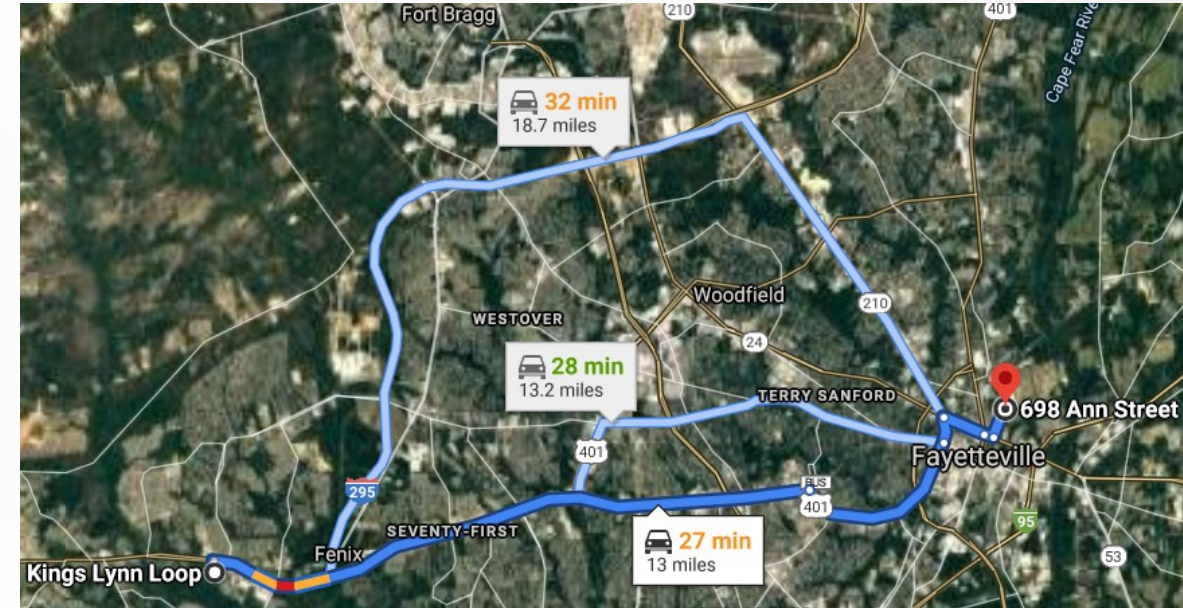


- Travel to sweeping location (10 – 25 Minutes)
- Sweeping speed (3 – 7 MPH)
 - Typical walking speed
- Sweeping time per load (2.5 hours, typical)





- Travel to dump site (10-25 Minutes)



- Dump (15 minutes)
 - Ensure gate seal is clean



Post Sweeping Operations

- Top off water tank (15 minutes)
- Travel back to sweeping zone (10-25 Minutes)
- 3-5 loads/day (10 hour shift, 6-7 sweeping hours)



- Daily wash out of hopper (30 minutes)
- Top off fuel and water for next day (15 minutes)
- Admin work (30 minutes)
 - Sweeper inspection form
 - Daily report on sweeping activities

Sweeping Frequency

<u>Municipality</u>	<u>Sweeping Frequency</u>
Jacksonville	1 ½ Months
Greensboro	3 – 4 Months
Raleigh	6 months
High Point	3 months
Durham	½ month, 1 month leaf season
NCDOT	3 months
<i>Fayetteville</i>	<i>3 months</i>

Sweeping Challenges

- Limb removal and placement in hopper (reduces sweeping time)

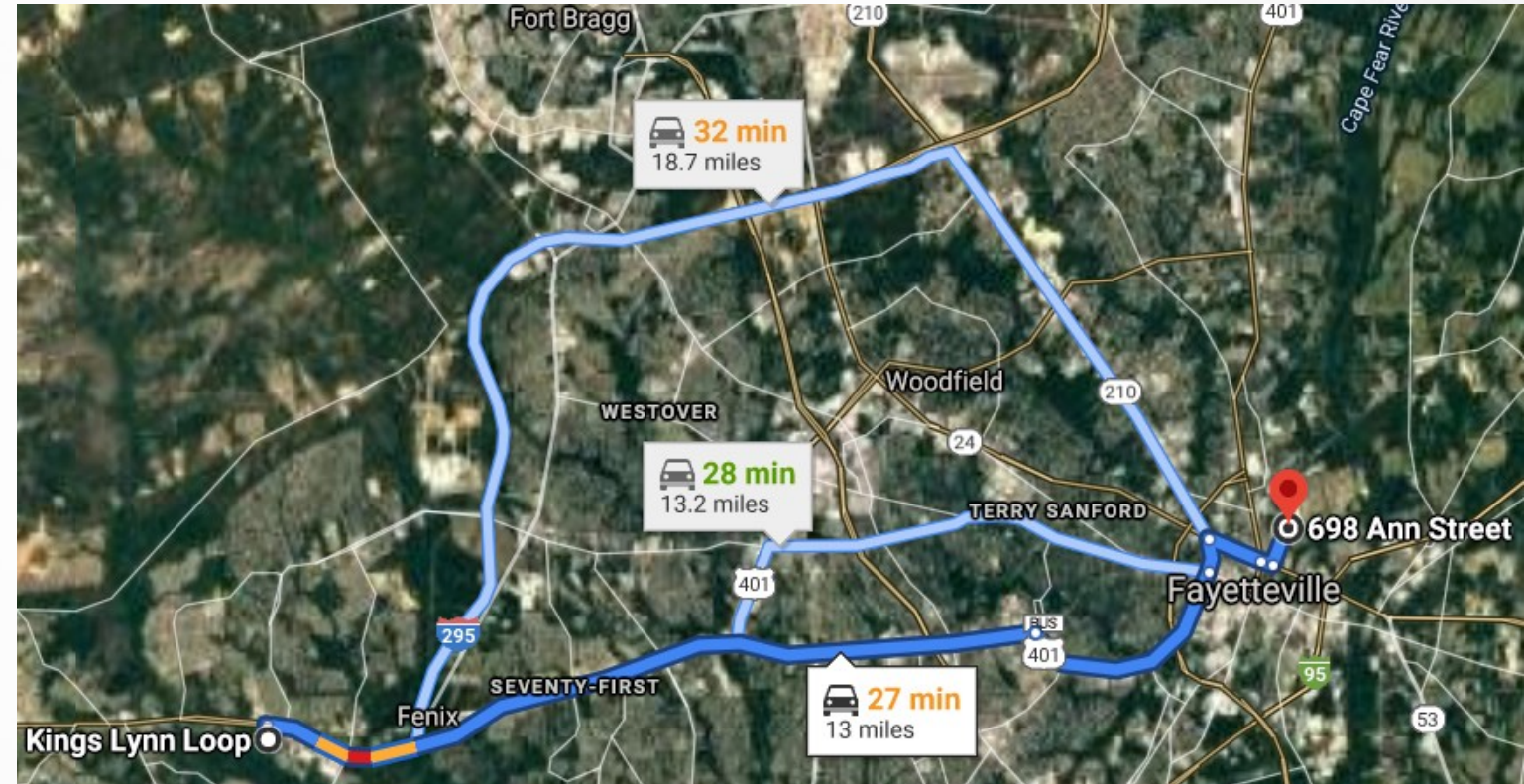
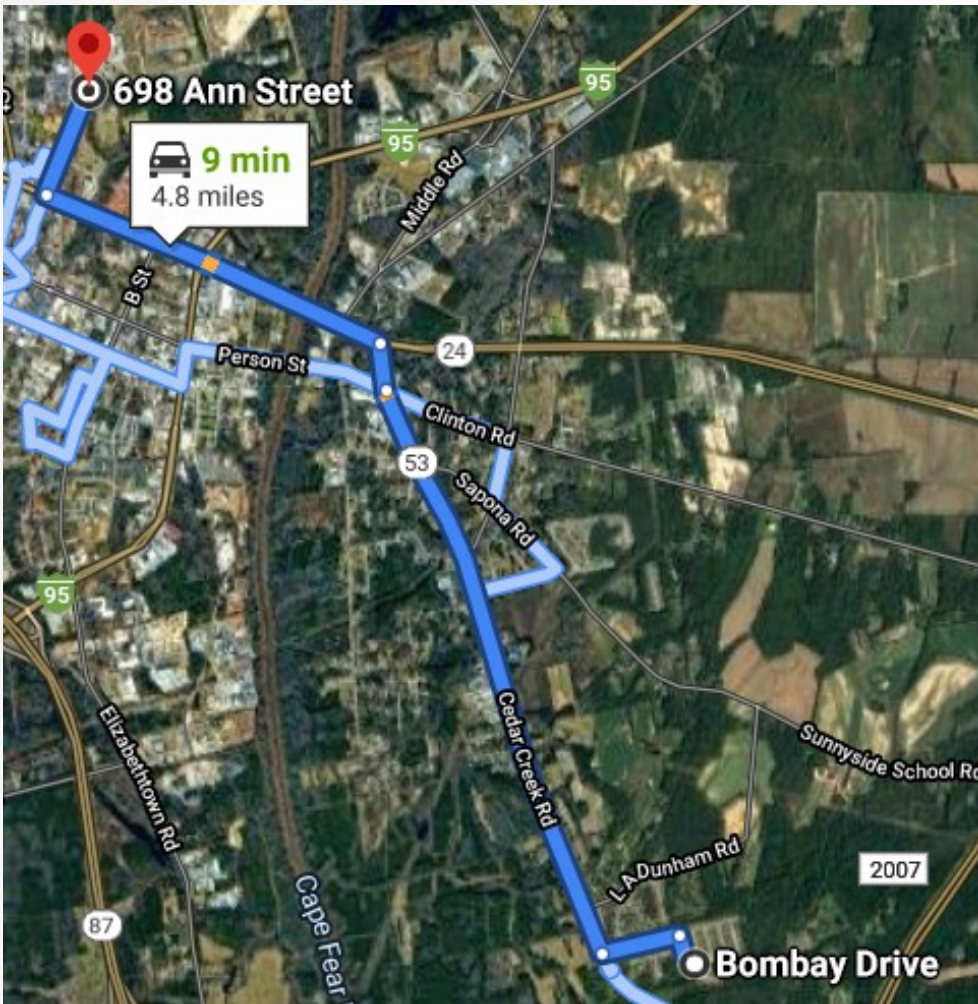


Sweeping Challenges



- Vegetation in the right of way
- Sweeper restricted from approaching the curb and gutter

Sweeping Challenges



- Distance to dump site (20 – 40 Minutes round trip)

Sweeping Challenges

- Typically only Curb and Gutter Roads



- Strip paved roads – No barrier to collect debris so exits roadway into ditch, intermittent sweeping

Sweeping Challenges

- Solid Waste compared to Sweepers
 - SW typically has 17 garbage trucks and 10 yard waste trucks daily, not weather dependent
 - Compared to 8 sweepers that are weather dependent



- Garbage Cans/Obstructions
 - SW places in street because some residents don't want them in yard
 - Sweep around cans, parked cars, other obstructions

Sweeping Challenges



- Lockwood Ct Before Storm

- Weather Events that occur between sweeping cycles



- Lockwood Ct After Storm

Sweeping Challenges

- After sweeping



- 3 weeks later



- Brewster St before sweeping

- Murchison Road – Barrier Rail near I-295
 - Partnership with NCDOT
 - May 25, 2021, NCDOT crews and City Sweepers
 - 30 cubic yards of material/litter removed (3 dump trucks)
 - Quarterly (minimum) sweeping





FayettevilleNC.gov