

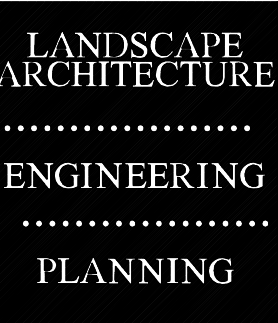
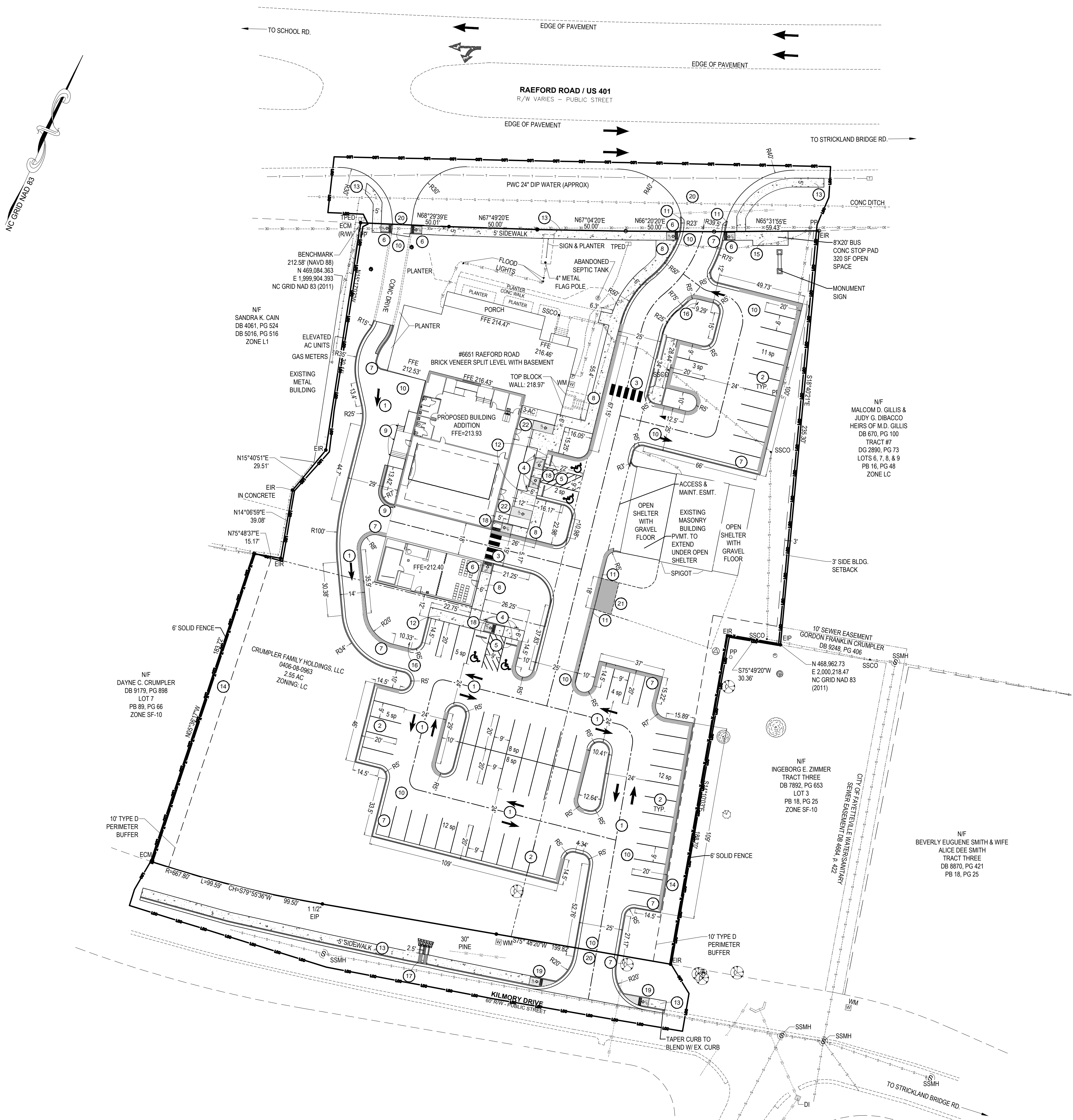
VICINITY MAP (N.T.S.)

SITE NOTES

1. INSTALL GROUND PAINTED DIRECTIONAL TRAFFIC ARROWS. SEE SHT. C5.0, #10.
2. INSTALL PAINT STRIPES. SEE SHT. C5.1, #2.
3. INSTALL HIGH VISIBILITY PEDESTRIAN CROSSWALK STRIPING. SEE SHT. C5.1, #4.
4. INSTALL PARKING SPACE STRIPING/ADA ACCESSIBILITY SIGNAGE. SEE SHT. C5.1, #2.
5. INSTALL WHEEL STOPS. SEE SHT. C5.1, #2 & C5.4, #4.
6. INSTALL ACCESSIBLE NON-WING TYPE RAMP. SEE SHT. C5.1, #3.
7. INSTALL 24" CURB & GUTTER. SEE SHT. C5.1, #7.
8. INSTALL STANDARD CONCRETE SIDEWALK. SEE SHT. C5.1, #8.
9. INSTALL 6" STEEL BOLLARDS. SEE SHT. C5.4, #6.
10. INSTALL LIGHT DUTY ASPHALT PAVEMENT. SEE SHT. C5.2, #1.
11. INSTALL CONCRETE CURB TAPER. SEE SHT. C5.1, #9.
12. INSTALL TURN DOWN SIDEWALK. SEE SHT. C5.4, #3.
13. INSTALL CITY SIDEWALK. SEE SHT. C5.3, #SD-12.
14. INSTALL 6" SOLID FENCE. SEE SHT. C5.4, #2.
15. INSTALL CITY BUS STOP PAD. SEE SHT. C5.3, #SD-17.
16. INSTALL TRAFFIC "DO NOT ENTER" SIGN. SEE SHT. C5.1, #10.
17. INSTALL DOUBLE SIDEWALK FLUME W/ CONC. FLUME OUTLET. SEE SHT. C5.4, #1 & #7.
18. INSTALL ACCESSIBLE IN-LINE TYPE RAMP. SEE SHT. C5.4, #5.
19. INSTALL CITY ADA RAMP. SEE SHT. C5.3, #SD-2.7.
20. INSTALL CITY PAVEMENT. SEE SHT. C5.3, #SD-16.2.
21. INSTALL 4" THICK #57 STONE DRIVE TRANSITION.
22. SEE ARCHITECTURAL PLANS FOR PORCH AREA RAMPS.

ADDITIONAL NOTES

1. ALL GENERAL NOTES, ABBREVIATIONS, SYMBOLS, AND OTHER INFORMATION INDICATED ON COVER SHEET SHALL APPLY TO THIS PLAN. ALL ELEVATIONS SHOWN ARE IN REFERENCE TO THE BENCHMARK AND MUST BE VERIFIED BY THE GENERAL CONTRACTOR WITH THE SURVEYOR OF RECORD PRIOR TO BEGINNING CONSTRUCTION. BENCHMARK IS AN EXISTING CONCRETE MONUMENT LOCATED AT THE NORTHWEST CORNER OF PROJECT SITE, WITH COORDINATES (N 469,084.393, E 1,999,904.393 (NC GRID NAD 83 (2011)) AND HAVING AN ELEVATION OF 212.58 (NAVD 88).
2. TOTAL AREA: 110,990 SF (2.55 AC)
3. TOTAL PARKING SPACES = 70; 4 ADA VAN ACCESSIBLE SPACES



Landscape Architecture ♦ Fayetteville, NC
Civil Engineering ♦ Southern Pines, Nc
116 N. Cool Spring Street ♦ Fayetteville, NC 28301
Voice: 910-221-0033 ♦ Fax: 910-221-0035
www.crawforddsn.com



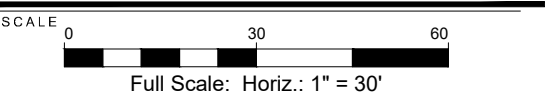
PRELIMINARY

REVISIONS	
0	Description

LAFAYETTE FUNERAL HOME
LAFAYETTE FUNERAL HOME
BUILDING ADDITION

SITE LAYOUT PLAN

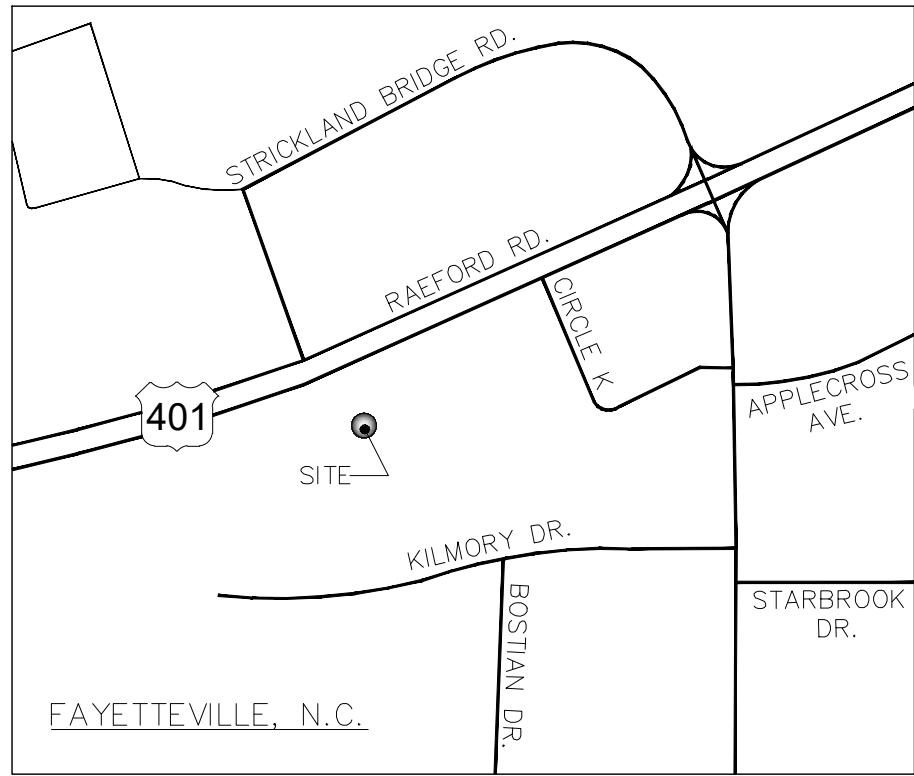
Project Manager:	FDC
CAD Technician:	DJL
Reviewed / Approved By:	FDC
Project Number:	21006



ISSUE DATE
04/22/2021

SHEET NUMBER

C2.0



VICINITY MAP (N.T.S.)

LANDSCAPE NOTES

- 1 MULCH LIMITS (SEE SHT. C5.3, #9&10)
- 2 INSTALL BERMUDA SOG
- 3 PERMANENT SEEDING
- 4 INSTALL 3" PVC SLEEVES AT MINIMUM 18" DEPTH

- ALL TREES SHALL BE MULCHED WITH A MINIMUM 6" PERIMETER UNLESS OTHERWISE INDICATED.
- CONTRACTOR SHALL USE HARDWOOD MULCH FOR ALL PLANTER BEDS UNLESS OTHERWISE INDICATED. THE USE OF ANY OTHER MULCHING MATERIAL MUST BE APPROVED BY THE DESIGNER PRIOR TO INSTALLATION. MULCH SHALL NOT COVER THE CROWN / ROOT FLARES OF THE PROPOSED PLANT MATERIAL.
- ALL PLANT MATERIAL SHALL BE APPROVED BY THE DESIGNER PRIOR TO ARRIVAL ON SITE. NO DEVIATIONS OR SUBSTITUTIONS FROM THE PLANT SCHEDULE SHALL BE ALLOWED WITHOUT WRITTEN APPROVAL FROM THE DESIGNER PRIOR TO THE ARRIVAL OF THE PLANT MATERIAL ON SITE.
- CONTRACTOR SHALL USE COMMERCIAL GRADE METAL EDGING FOR ALL PLANTER BEDS NOT ENCLOSED BY CONCRETE OR ASPHALT UNLESS OTHERWISE INDICATED. THE USE OF ANY OTHER EDGING MATERIAL SHALL BE APPROVED BY THE DESIGNER PRIOR TO INSTALLATION.
- TREES, SHRUBS & OTHER PLANTINGS SHALL MEET ALL LOCAL AND STATE REQUIREMENTS.
- ALL PLANTS MUST BE MULCHED WITHIN TWO (2) DAYS OF PLANTING BY COVERING THE ENTIRE PLANTING AREA WITH A 4-INCH THICK MINIMUM LAYER OF MULCH.
- ALL TREES SHALL BE AT LEAST 2" CALIPER AT TIME OF PLANTING UNLESS OTHERWISE SPECIFIED. ALL SHRUBS SHALL BE A MINIMUM SIZE OF THREE (3) GALLONS AT TIME OF PLANTING UNLESS OTHERWISE SPECIFIED.
- FOUNDATION PLANTINGS SHALL BE SPACED AN APPROPRIATE DISTANCE AWAY FROM BUILDING WALLS TO ASSURE PROPER MAINTENANCE AND GROWTH.
- CONTRACTOR SHALL BE RESPONSIBLE FOR INSTALLING AND MAINTAINING TREE PROTECTION FENCING AROUND ALL "AT-RISK" TREES WITHIN THE VICINITY OF THE CONSTRUCTION ACTIVITY WHETHER SPECIFICALLY INDICATED ON THE PLANS OR NOT. TREE PROTECTION FENCING SHALL BE INSTALLED PRIOR TO BEGINNING ANY CONSTRUCTION OR OTHER DEVELOPMENT ACTIVITIES, AND SHALL BE MAINTAINED AT ALL TIMES THROUGHOUT THE DURATION OF THE PROJECT UNTIL FINAL SITE INSPECTION. REFER TO CONSTRUCTION PLAN DETAIL SHEETS FOR TREE PROTECTION DETAIL(S).
- THE CONTRACTOR SHALL BE RESPONSIBLE FOR PROTECTING ALL PLANT MATERIAL AGAINST DAMAGE DURING THE CONSTRUCTION PERIOD. PROTECTION SHALL BEGIN FROM THE TIME THE PLANT MATERIAL IS INSTALLED AND SHALL CONTINUE UNTIL FORMAL ACCEPTANCE OF THE PROJECT.
- ALL PLANT MATERIAL SHALL BE MAINTAINED UNTIL SUBSTANTIAL COMPLETION IS APPROVED BY THE OWNER. MAINTENANCE SHALL INCLUDE, BUT IS NOT LIMITED TO, WATERING, PRUNING, FERTILIZING, ETC.
- PRUNE PROPOSED TREES TO MAINTAIN 6-FT CLEAR UNDERSTORY HEIGHT.
- JUTE MESH SHALL BE PROVIDED ON ALL SLOPES GREATER THAN 3:1.
- IN THE EVENT OF A DISCREPANCY IN PLANT MATERIAL QUANTITIES BETWEEN THE DRAWINGS AND THE PLANT LISTS, THE LARGER QUANTITIES SHALL BE REQUIRED.
- THE CONTRACTOR SHALL SUPPLY PLANT MATERIAL IN QUANTITIES SUFFICIENT TO COMPLETE THE PLANTING AS SHOWN ON THE PLANS.
- THE CONTRACTOR SHALL LOCATE AND MARK ALL EXISTING AND PROPOSED UTILITIES TO VERIFY PROPOSED TREE LOCATIONS, AND SHALL REPORT ANY CONFLICTS TO THE DESIGNER TO DETERMINE ALTERNATE PLANTING LOCATIONS.
- STAKE ALL PROPOSED TREE PLANTINGS FOR REVIEW AND POTENTIAL ADJUSTMENT BY THE DESIGNER.
- SHRUBBERY IS TO BE PLANTED AT LEAST 30" FROM CURBING AND FROM END OF PARKING SPACES TO PREVENT DAMAGE FROM CAR OVERHANG.
- SHRUBS INSTALLED AS VEHICULAR USE SCREENING ARE TO BE MAINTAINED AT A MIN. HEIGHT OF 36" MIN. INSTALLATION HEIGHT IS 24".
- SITE LIGHTING PLANS REQUIRE LIGHTS TO BE A MIN. OF 15 FEET FROM TREES. ANY ADJUSTMENTS IN THE FIELD NEED TO COMPLY WITH THIS STANDARD AND BE APPROVED BY STAFF.
- EACH TREE MUST BE PLANTED SUCH THAT THE ROOT FLARE IS VISIBLE AT THE TOP OF THE ROOT BALL. TREES WHERE THE ROOT FLARE IS NOT VISIBLE WILL BE REJECTED. DO NOT COVER THE ROOT FLARE WITH MULCH.
- DO NOT PLACE MULCH IN CONTACT WITH THE TREE TRUNK. KEEP MULCH A MIN. OF 4" AWAY FROM THE TRUNK BASE.
- ANY CHANGES TO THE PROPOSED PLANT SCHEDULE MUST BE APPROVED BY THE DESIGNER OF RECORD AND STAFF. IN CASES WHERE THE PLANT SCHEDULE ONLY INCLUDES THE PLANT TYPE AND DOES NOT INCLUDE THE PLANT SPECIES, THE CONTRACTOR SHALL BE REQUIRED TO SUBMIT TO THE CITY FOR APPROVAL. A DETAILED PLANT SCHEDULE AND ASSOCIATED PLANTING PLAN PREPARED BY SOMEONE KNOWLEDGEABLE ABOUT PLANT MATERIAL AND DESIGN, PRIOR TO PROCEEDING WITH INSTALLATION.
- PROPERTY PERIMETER BUFFER - IN AREAS WHERE EXISTING VEGETATION IS TO BE USED TO SATISFY PERIMETER LANDSCAPE BUFFER, THE CITY MAY DETERMINE, AFTER AN ON-SITE INSPECTION, THAT ADDITIONAL PLANTING IS REQUIRED TO SATISFY THE REQUIRED BUFFER.

LANDSCAPE REQUIREMENTS

CITY OF FAYETTEVILLE LANDSCAPING REQUIREMENTS:

BUILDING:

Perimeter of building additions: 369 LF
Requirement: 1 shrub per 5 LF = 74
Shrubs provided: 74

BUFFER:

Buffer length (Southeast property line): 189 LF; (Southwest property line): 184'
Requirement: Type D: 6" Fence plus 6 Canopy Trees plus 25 shrubs/100 LF
48 shrubs for southeast p/l; 46 shrubs for southwest p/l
Trees & shrubs shown indicate this requirement.

STREET TREES:

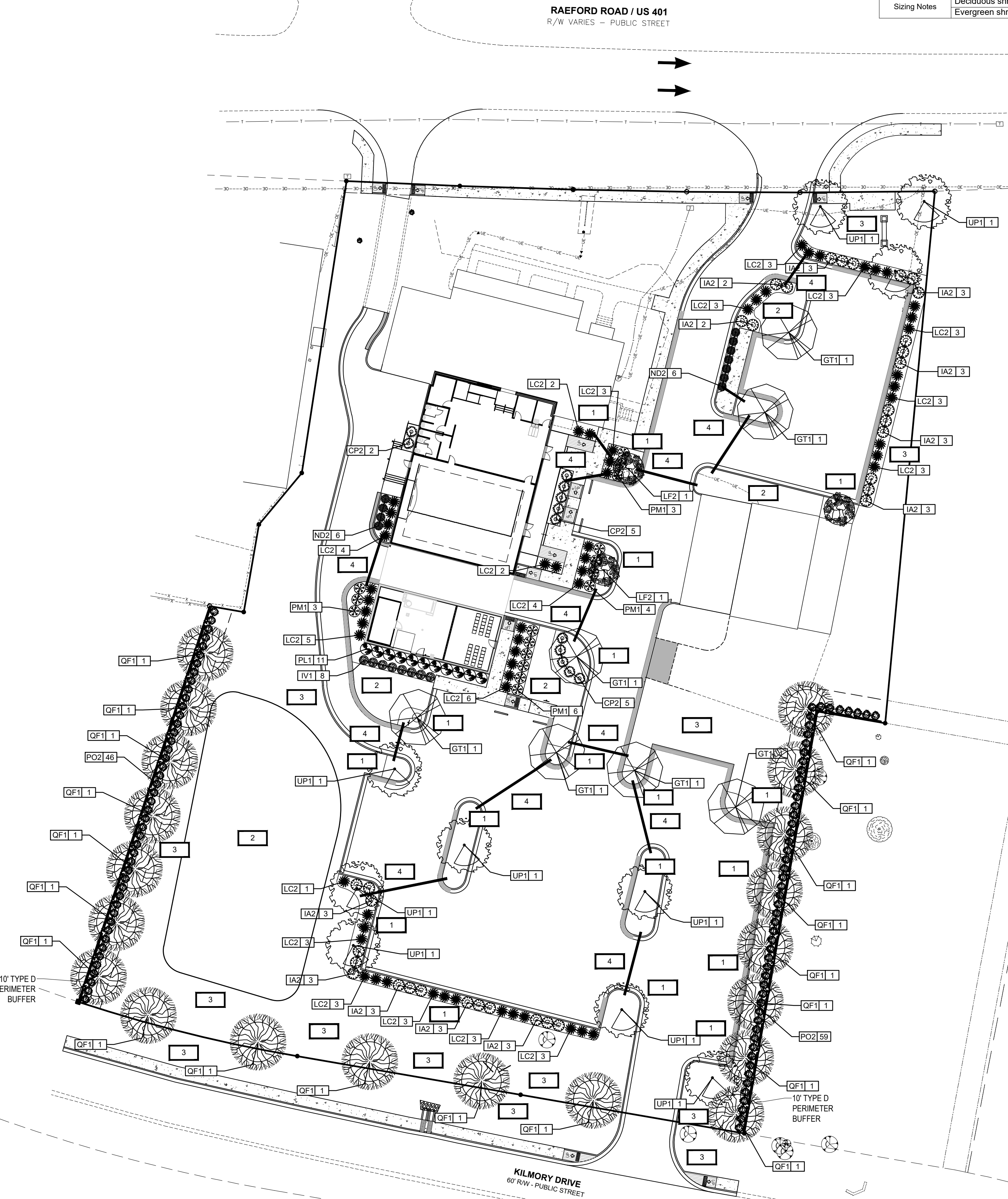
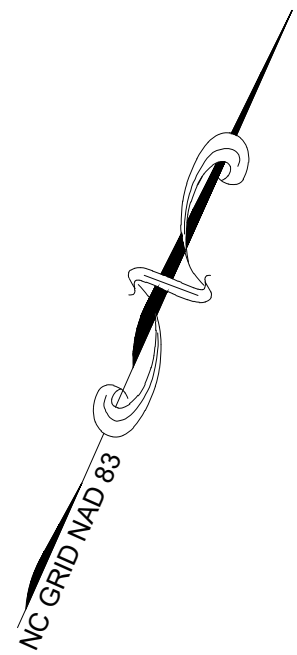
Improved area along Raeford Road (entrance drive): 86 LF
Kilmorey Drive: 300 LF
Requirement: 1 canopy tree per 50 LF
Raeford Road: 2
Kilmorey Drive: 6

PARKING BAY ENDS:

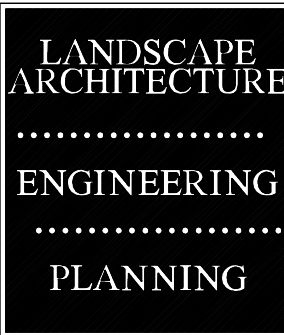
Requirement: 1 shrub per 5 LF
Plant locations along parking perimeter indicates this requirement.

ADDITIONAL NOTES

- ALL GENERAL NOTES, ABBREVIATIONS, SYMBOLS, AND OTHER INFORMATION INDICATED ON [SHEET C#.# (OR) TITLE PAGE] SHALL APPLY TO THIS PLAN.



Plant List Reference Table					
Classification	Key	Common Name	Botanical Name	Quantity	Type / Size
Canopy Trees	QF1	Southern Red Oak	Quercus falcata	20	2' cal., 8' ht. minimum.
	UP1	Chinese Elm	Ulmus parvifolia	10	2' cal., 8' ht. minimum.
	GT1	Thornless Honey Locust	Gleditsia triacanthos f. inermis 'Shademaster'	7	2' cal., 8' ht. minimum.
TOTAL CANOPY TREES				37	
Understory Trees	LF2	Crape Myrtle (Twilight)	Lagerstroemia x fauriei 'Twilight'	3	1.5" cal., 5' ht. minimum.
	AL1	Allegheny Serviceberry	Amelanchier laevis	6	1.5" cal., 5' ht. minimum.
TOTAL UNDERSTORY TREES				9	
Shrubs	CP2	False Cypress (Golden Mop)	Chamaecyparis pisifera 'Golden Mop'	12	See Sizing Notes
	IV1	Dwarf Yaupon Holly	Ilex vomitoria 'Compacta'	8	See Sizing Notes
	PL1	Dwarf Cherry Laurel	Prunus laurocerasus 'Otto Luyken'	11	See Sizing Notes
	PM1	Dwarf Mugho Pine	Pinus mugo 'White Bud'	16	See Sizing Notes
	IA2	Variegated English Holly	Ilex aquifolium english holly 'variegated'	60	See Sizing Notes
	LC2	Loropetalum (Razzleberry)	Loropetalum chinese rubrum 'Razzleberry'	34	See Sizing Notes
	ND2	Heavenly Bamboo (Gulf Stream)	Nandina domestica 'Gulf Stream'	11	See Sizing Notes
	PO2	Dwarf Arborvitae (Golden Globe)	Thuja occidentalis 'Golden Globe'	105	See Sizing Notes
TOTAL SHRUBS				257	
Sizing Notes		Deciduous shrubs shall be 24" tall at planting Evergreen shrubs shall be 18" tall at planting			



Landscape Architecture ♦ Fayetteville, NC
Civil Engineering ♦ Southern Pines, NC
116 N. Cool Spring Street ♦ Fayetteville, NC 28301
Voice: 910-221-0033 ♦ Fax: 910-221-0035
www.crawforddsn.com



SEALS



PRELIMINARY

REVISIONS	
0	mm-dd-yy Description

LAFAYETTE FUNERAL HOME
LAFAYETTE FUNERAL HOME
BUILDING ADDITION

LANDSCAPE PLANTING PLAN

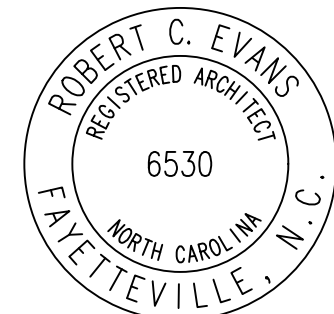
PROJECT DETAILS
Project Manager: FDC
CAD Technician: ILB
Reviewed / Approved By: FDC
Project Number: 21006

SCALE 0 30 60
Full Scale: Horiz.: 1" = 30'

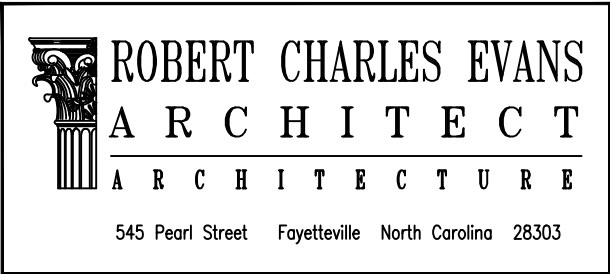
ISSUE DATE 04/22/2021

SHEET NUMBER

L1.0



11.30.20



Lafayette Funeral Home

Addition

Drawing Name:
Exterior Elevations
Roof Plan

Project Name:
An Addition to
Lafayette Funeral Home

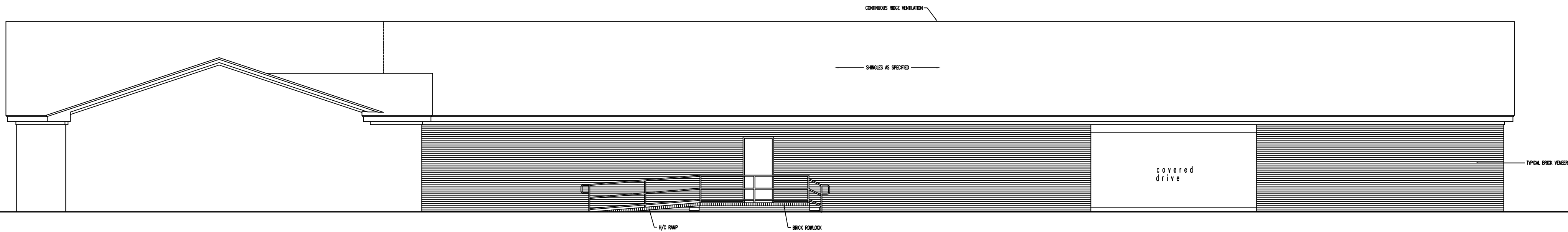
Project Location:
6651 Raeford Road
Fayetteville
North Carolina

DRAWINGS AND THE DESIGN ARE THE PROPERTY OF THE ARCHITECT. WHETHER THE PROJECT FOR WHICH THEY ARE PREPARED IS EXECUTED OR NOT, THE DRAWINGS SHALL NOT BE USED BY THE PROJECT OWNER OR ANYONE ELSE FOR ANY OTHER PROJECT.

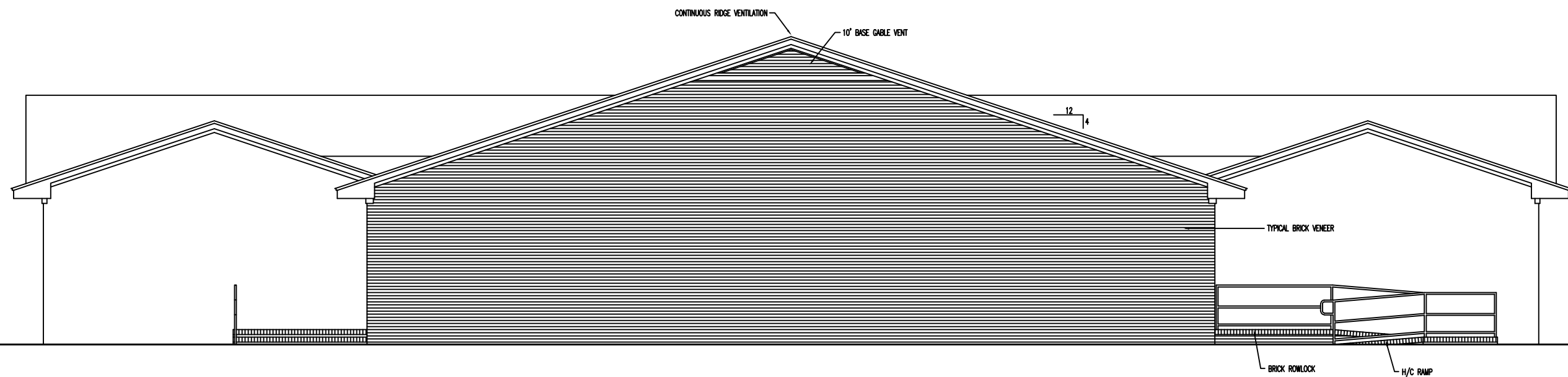
ADA AND LEGAL DISCLAIMER
THIS DOCUMENT IS INTENDED TO COMPLY WITH THE REQUIREMENTS OF THE AMERICANS WITH DISABILITIES ACT (ADA). ARCHITECTS AND ENGINEERS ARE NOT LICENSED TO INTERPRET LAWS OR GIVE ADVICE CONCERNING LAWS OR LEGAL MATTERS. THE OWNER SHOULD HAVE THIS DOCUMENT REVIEWED BY HIS ATTORNEY TO DETERMINE IF IT COMPLIES TO ADA AND OTHER LAWS.

PROJECT NO:	20-116
DRAWN BY:	RCE,jec
DATE:	09.22.20
REVISIONS:	

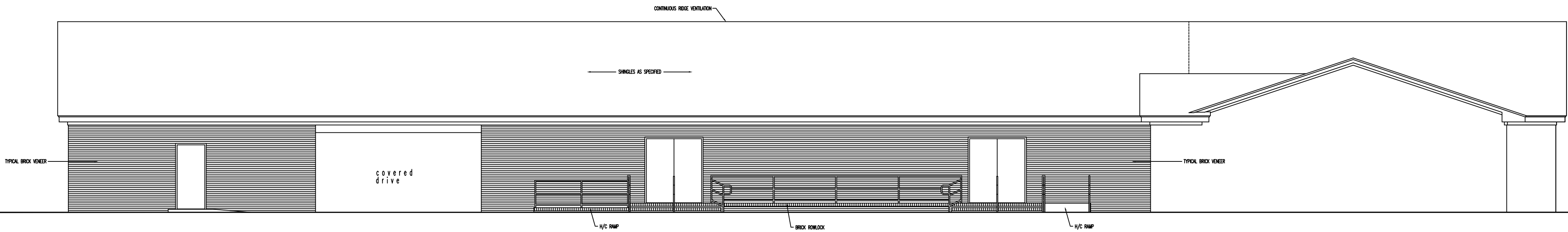
SHEET NO:
A3.1



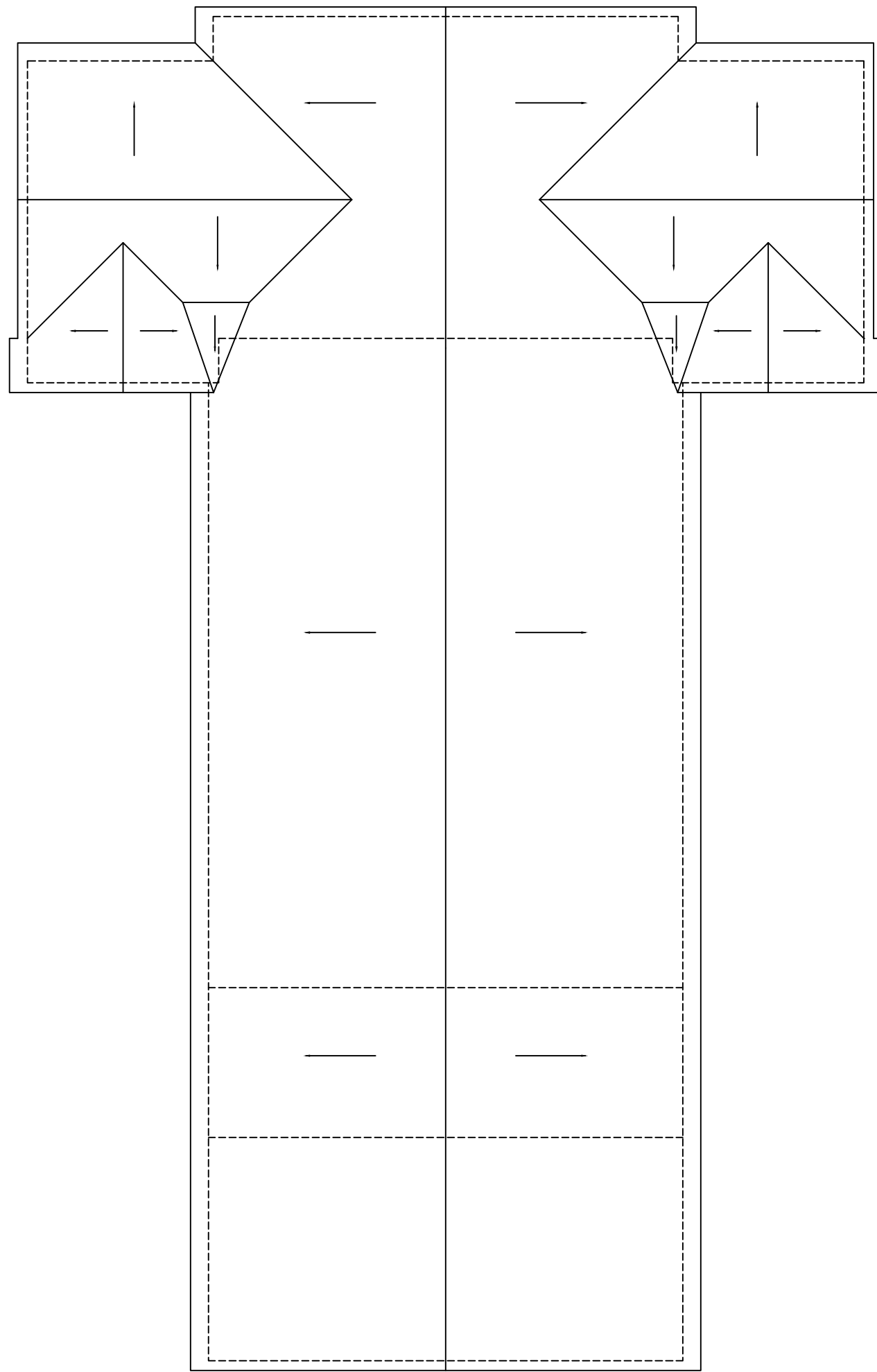
01 RIGHT ELEVATION
1/8" = 1'-0"



02 REAR ELEVATION
1/8" = 1'-0"



03 LEFT ELEVATION
1/8" = 1'-0"



04 ROOF PLAN
1/16" = 1'-0"